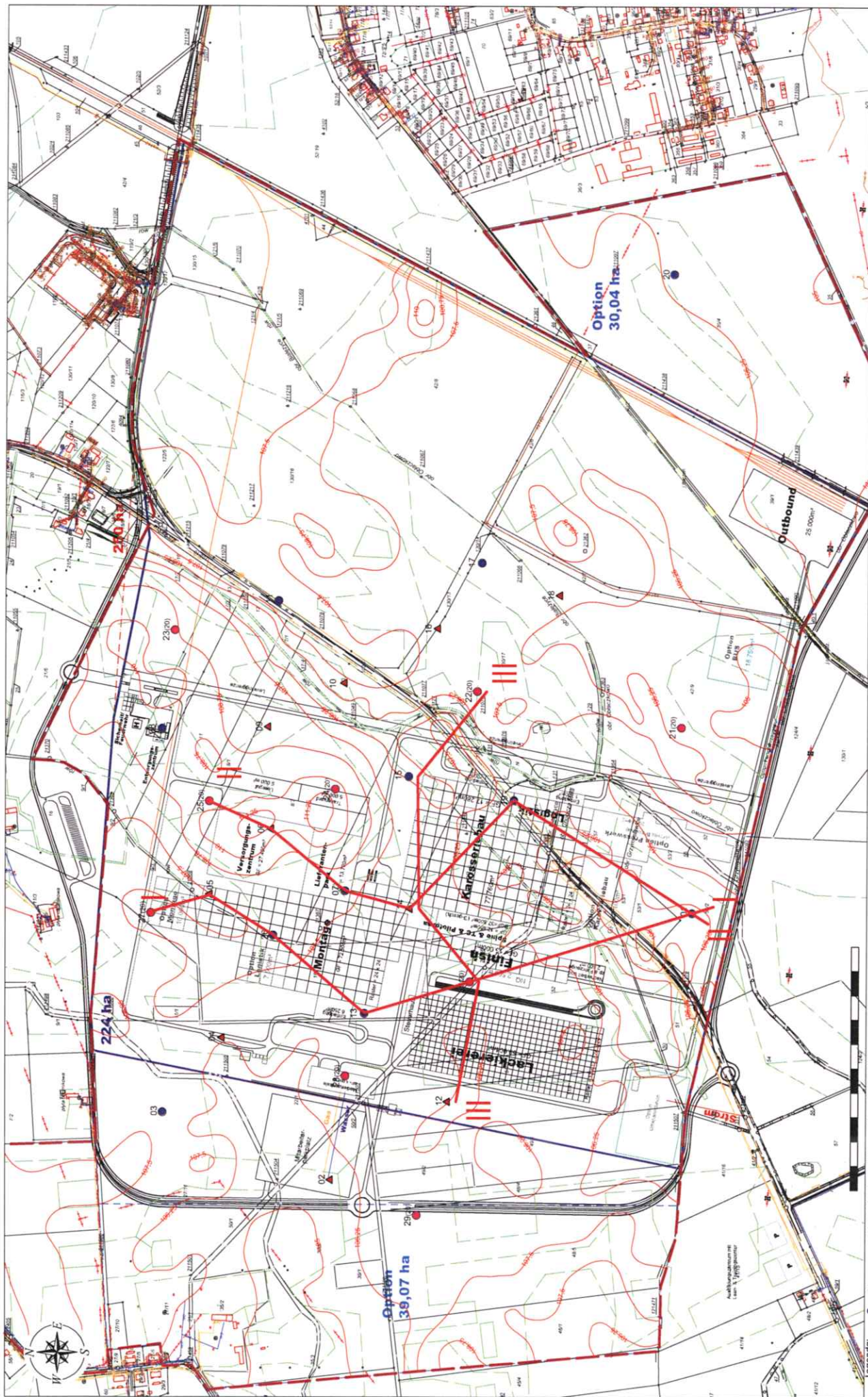
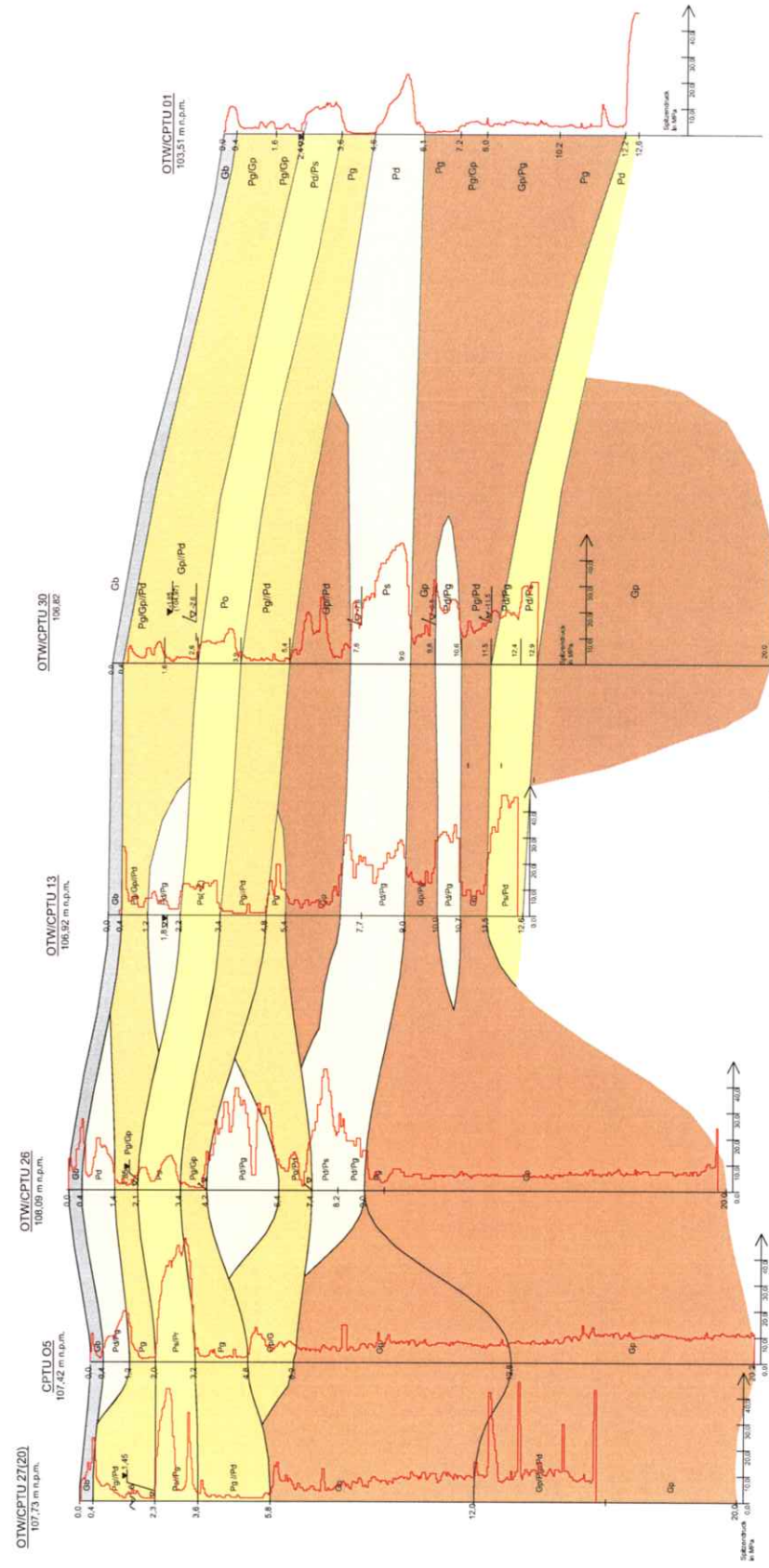
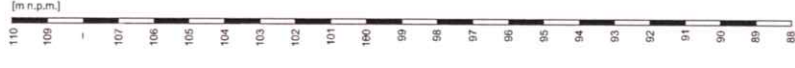


Przekroje hydrogeologiczne przez teren inwestycji

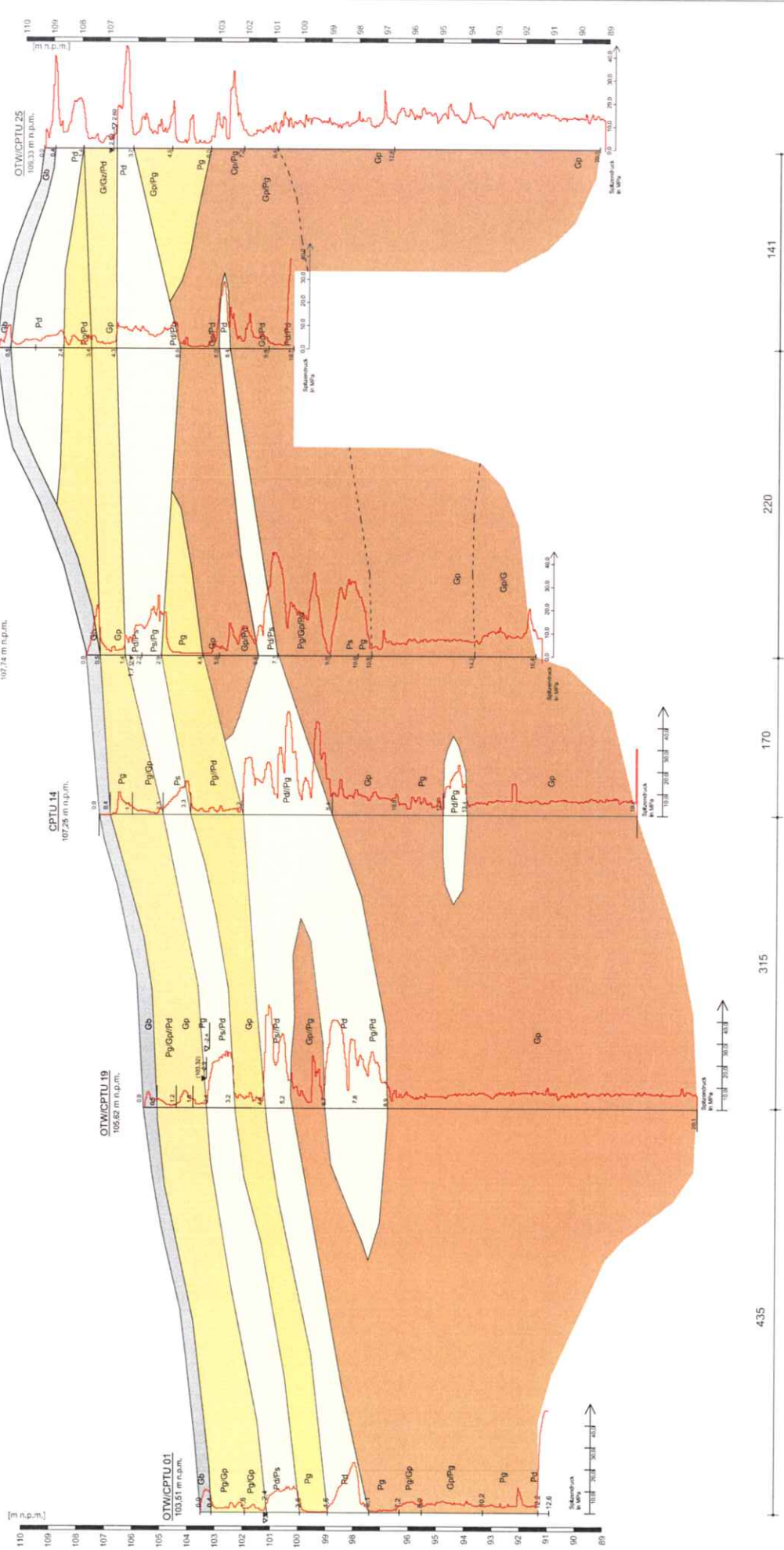


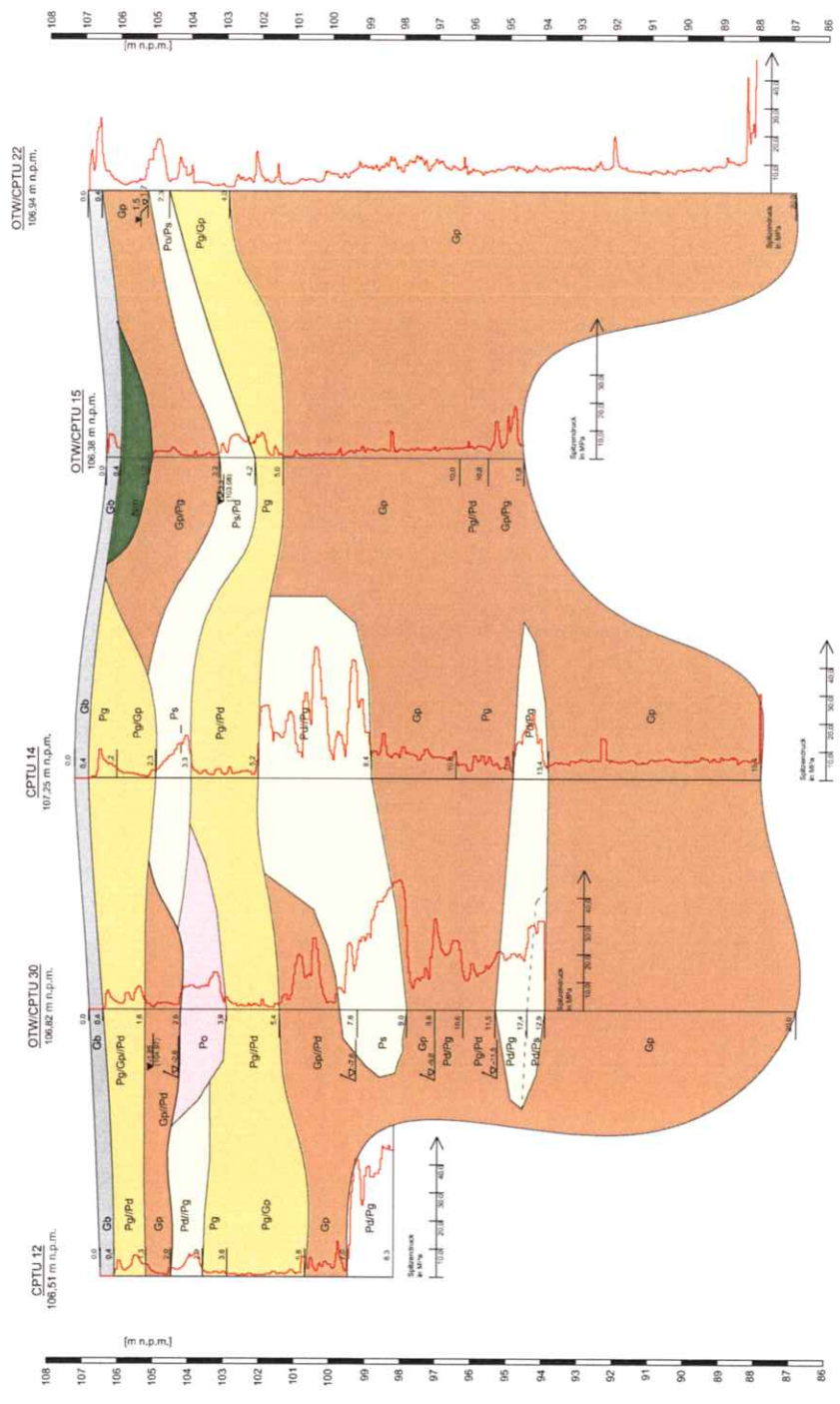
- odwierc. archiwalny do gl. 10m p.p.l. i sondowane CPTU
 - odwierc. archiwalny do gl. 10m p.p.l. i sondowane CPTU
 - archiwalne sondowane CPTU

- Legenda:**
- 01
 - 27(20m)
 - 14



177 m 177 m 248 m 228 m 460 m





225 195 270 225