

STAKEHOLDER ENGAGEMENT PLAN

**Crucea North Wind Farm 99 MW
(extension to 108 MW as option)**

S.C. Crucea Wind Farm S.R.L.

August 2013

Revision 4

TABLE OF CONTENT

1	INTRODUCTION AND PROJECT DESCRIPTION	4
1.1	INTRODUCTION	4
1.2	OVERVIEW-AIMS AND OBJECTIVES OF THE SEP	4
1.3	PROJECT DESCRIPTION	6
2	REGULATORY PERMITTING AND STAKEHOLDER ENGAGEMENT STEPS UNDERTAKEN FOR THE PROJECT	11
3	PROJECT STAKEHOLDERS	17
4	SUMMARY OF STAKEHOLDER ENGAGEMENT ACTIVITIES TO DATE	24
5	STAKEHOLDER ENGAGEMENT PROGRAMME AND TIMETABLE	41
6	ORGANISATION OF THE SOCIAL ENGAGEMENT ACTIVITIES – RESOURCES, RESPONSIBILITIES AND MANAGEMENT	49
7	GRIEVANCE MECHANISM	51

Annex A List of Stakeholders

Annex B Stakeholder Mapping

Annex C Public Grievance Form

Annex D List of Relevant Romanian Environmental Permitting Regulations

Annex E Template of the comments register

ABREVIATIONS LIST

ANIF	National Land Improvement Administration
CC	County Council
CP	Construction Permit
UC	Urban Certificate
D.T.A.C.	Technical Documentation for Construction Permit
EIA	Environmental Impact Assessment
EPC	Engineering, Procurement and Construction
ER	Environmental Report (SEA Report)
ESAP	Environmental and Social Action Plan
ESMP	Environmental and Social Management Plan
ESMS	Environmental and Social Management System
ESIA	Environmental and Social Impact Assessment
EU	European Union
G.D.	Governmental Decision
LEPA	Local Environmental Protection Agency
MAI	Ministry of Administration and Interior
M.O.	Ministry Order
NTS	Non - Technical Summary
Project	Crucea North Wind Farm 99 MW (extension to 108 MW as option)
PUZ	Urban Zoning Plan
SC	Special Committee
SEA	Strategic Environmental Assessment
SEP	Stakeholders Engagement Plan
SPV	Special Purpose Vehicle
TAC	Technical Analysis Committee (TAC)
WG	Working Group
WTG	Wind turbine generator

1 INTRODUCTION AND PROJECT DESCRIPTION

1.1 INTRODUCTION

This document represents the Stakeholder Engagement Plan (SEP) for Crucea North Wind Farm 99 MW (extension to 108 MW as option), hereinafter named *the Project* to be implemented by S.C. CRUCEA WIND FARM S.R.L. The Project is located on the territories of Crucea, Pantelimon and Vulturu Communes.

This SEP has been prepared by S.C. CRUCEA WIND FARM S.R.L. with assistance from S.C. Environmental Resources Management S.R.L. (ERM).

The SEP is aimed to provide the framework for ensuring meaningful Project stakeholders' consultation and engagement, in line with IFC Performance Standards and Guidelines. It is to be mentioned that, according to IFC standards, stakeholder engagement must be based on on-going consultations that continue through the entire life cycle of the Project. Therefore the SEP is to be considered a "living" document that has to be periodically updated by the company to reflect stakeholder engagement development along Project lifetime.

This Stakeholder Engagement Plant is covering the following aspects:

1. Introduction and Project Description
2. Regulatory Requirements Pertaining to Permitting and Stakeholder Engagement
3. Project Stakeholders
4. Summary of Stakeholder Engagement Activities to Date
5. Stakeholder Engagement Programme and Timetable
6. Organization of the Social Engagement Activities, – Resources, Responsibilities and Management
7. Grievance Mechanism

1.2 OVERVIEW-AIMS AND OBJECTIVES OF THE SEP

As mentioned in the IFC Performance Standard 1 - Assessment and Management of Environmental and Social Risks and Impacts, stakeholder engagement is the basis for building strong, constructive, and responsive relationships that are essential for the successful management of a project's environmental and social impacts. Therefore, stakeholder engagement is an on-going process that may involve, in varying degrees, the following elements:

- stakeholder analysis and planning;

- disclosure and dissemination of information;
- consultation and participation;
- grievance mechanism;
- ongoing reporting to Affected Communities.

The objectives of this SEP are to ensure that the Project:

- properly informs potentially affected stakeholders about the proposed Project;
- actively listens to comments, ideas and concerns raised by stakeholders and records the same for follow up;
- avoids potential conflicts with stakeholders by addressing any impacts and issues raised by stakeholders promptly;
- ensures that any fears and apprehensions about the nature, scale and impact of the operation have been properly considered in the development and management of the Project;
- accesses and makes best use of existing local knowledge of the area;
- avoids any misunderstandings about the Project and properly manages expectations;
- implement a viable grievance mechanism.

The nature, frequency and level of effort of stakeholder engagement are very much dependent on a project's risks and adverse impacts, and a project's phase of development.

The SEP provides for the identification of stakeholders, i.e. people who have an interest or a role in the Project's development or could be affected by the Project, and sets out the planned program for disclosure of project information and consultation with stakeholders as well as the methods for handling stakeholders' concerns and grievances in case they arise.

This SEP is prepared in the context of the environmental and social impact assessment process for the Project. While the local regulatory framework in Romania refers to Environmental Impact Assessment (EIA) only, *S.C. CRUCEA WIND FARM S.R.L.* is also looking at the social implications of the Project as per best international practice. *S.C. CRUCEA WIND FARM S.R.L.* is thus undertaking a wider scoped Environmental and Social Impact Assessment (ESIA).

Fundamentally, this SEP follows the public information and consultation requirements embedded in the respective regulatory ESIA requirements in Romania which are based on the respective EU framework (Directive

2003/35EC). However, *S.C. CRUCEA WIND FARM S.R.L.* will add some supplementary elements for disclosure and stakeholder engagement in line with IFC Performance Standards on Environmental and Social Sustainability 2012 (Performance Standard 1) as described herein.

The main supplementary element to the legally prescribed process in Romania is to present to each of the potential affected communities the Project to their entire cumulative dimension.

This SEP is not a formal document required for the purpose of a permitting application in Romania. On the one hand, it is intended to provide *S.C. CRUCEA WIND FARM S.R.L.* with a framework to guide the stakeholder engagement process, and on the other to provide stakeholders, including the public, a transparent view on the consultation and disclosure activities planned for the Project.

Stakeholder engagement is the basis for building strong, constructive, and responsive relationships that are essential for the successful management of a project's environmental and social impacts.

The purpose of stakeholder engagement is to establish and maintain a constructive relationship with stakeholders over the life of the project and is an integral part of an effective and adaptive Environmental and Social Management Plan (ESMP).

The goal is to ensure the timely provision of relevant and understandable information and to create a process that provides opportunities for all stakeholders to express their views and concerns, and allows the company to consider and respond to them.

This SEP will be made available to the public by being published on the main shareholder website (<http://www.steag.com>) and will be locally accessible to the public as part of the Project's information disclosure policy and program as described below.

1.3

PROJECT DESCRIPTION

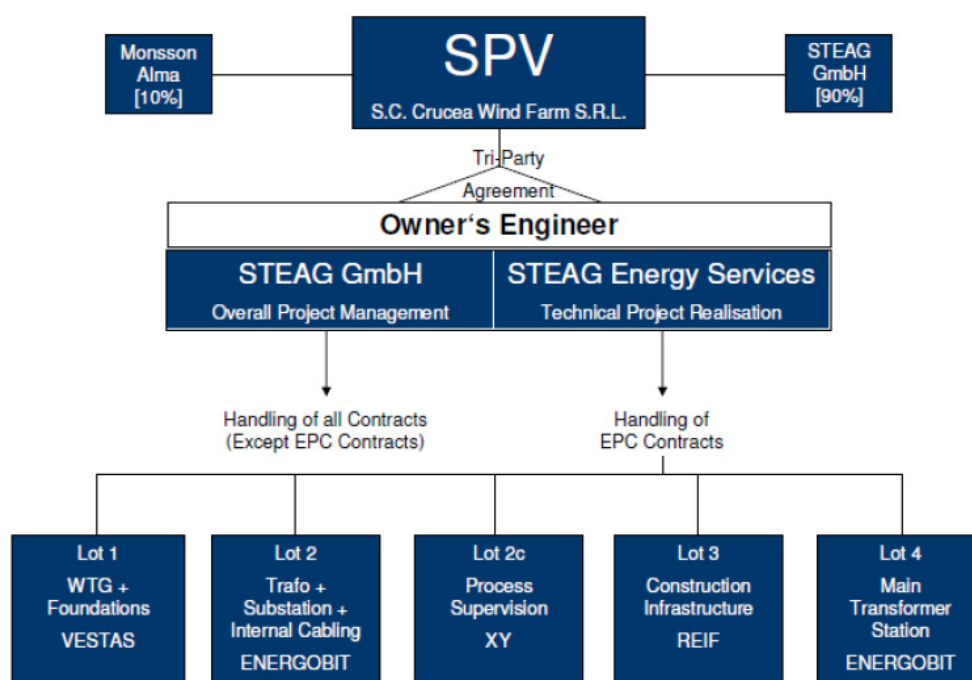
The Project “Crucea North Wind Farm 99 MW (extension to 108 MW as option)” is owned by STEAG GmbH and Monsson Alma through the local project company SPV (*S.C. Crucea Wind Farm S.R.L.*).

On behalf of SPV, the owner's engineer, consisting in STEAG GmbH and STEAG ENERGY SERVICES GmbH (SES). STEAG GmbH handles all contracts, which are not related to Engineering, Procurement and Construction (EPC). SES handles the contracts related to EPC.

The main contractors which will be involved in project implementation are the following:

- VESTAS - supplier of wind turbines ;
- ENERGOBIT - provision of electrical works;
- REIF - provision of civil works.

Figure 1.1 The Project Organization Chart



Crucea North Wind Farm will be located on fields within the incorporated areas of Vultur, Pantelimon and Crucea Communes, in Constanta County.

Figure 1.2 General Project location



The Crucea North Wind Farm 99 MW (extension to 108 MW as option) site is approximately 22.64 km² and includes the project footprint, the wind farm safety area and a development buffer area. The footprint comprises the total area that was rezoned to industrial use, namely 90.5 ha, which includes the wind turbine towers, permanent access roads, a substation, and permanent crane platforms.

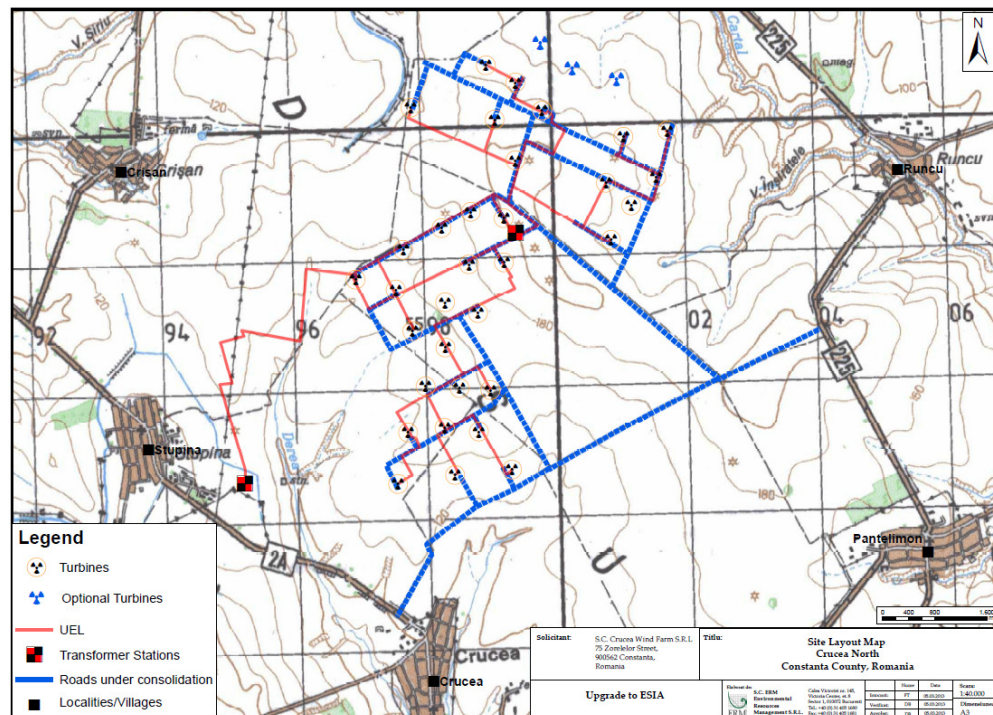
The area occupied by new roads will cover approximately 2.4 ha, while the existing roads, after modernization will occupy an area of approximately 18.56 ha.

The main components of the Project are listed below:

- construction of 33 (after extension 36) horizontal axis Vestas V112 wind turbines, each with a capacity of 3 MW, total capacity of approximately 99 MW (after extension: 108 MW). The maximum height of a turbine will be 175 m, with a hub height of 119 m;
- construction of a Project Substation 33/110 kV to be located within the wind farm site boundary;

- construction of a 400/110 kV new Transformer Station Stupina 2 with one 250 MVA transformer, which will be connected to the existing Stupina 110/400 kV transformer station;
- organization of a temporary construction compound within the wind farm site boundary.
- construction of a permanent concrete platform at the site of each turbine which will be required for the installation and maintenance of the turbines;
- construction of permanent crane pads;
- upgrade of approximately 45 km of existing agricultural service roads and construction of approximately 6 km of new access roads to the turbines;
- construction and operation of approximately 43 km of underground medium-voltage (33 kV) electrical connection lines to link the turbines and the 33/110 kV Project Substation;
- construction and operation of approximately 8.8 km of underground high-voltage transmission lines (110 kV) from the 33/110 kV Project Substation to the 400/110 kV Stupina 2 Transformer Station;
- construction and operation of approximately 150 m of underground high-voltage transmission lines (400 kV) connecting the 400/110 kV Stupina 2 Transformer Station to the Power Distribution Grid owned by C.N.E.E. Transelectrica S.A. via the existing 110/400 kV Stupina Transformer Station.

Figure 1.3 Site layout map



Further details about the proposed project and current land use may be available, upon request, using the contact details provided in chapter 6.

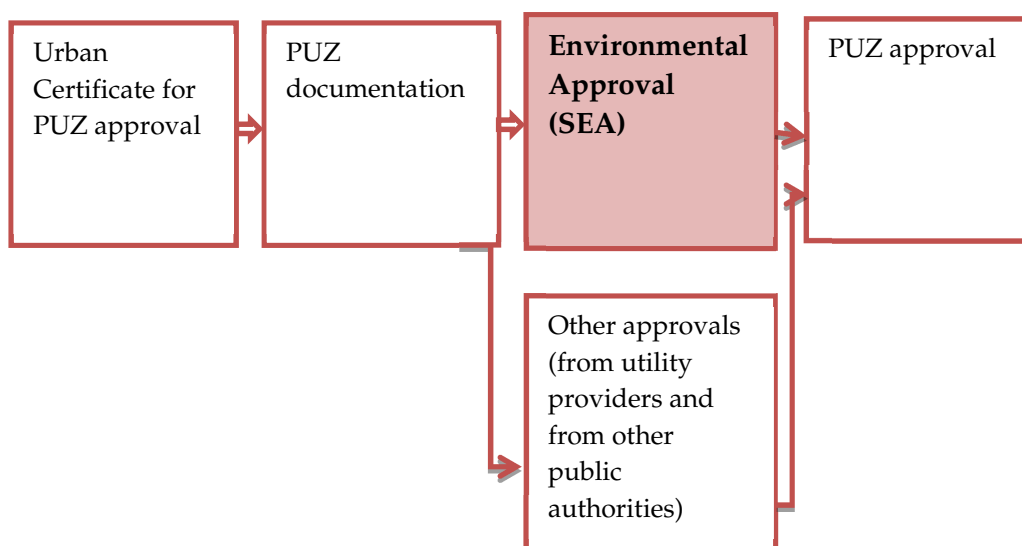
REGULATORY PERMITTING AND STAKEHOLDER ENGAGEMENT STEPS UNDERTAKEN FOR THE PROJECT

In Romania, the execution of construction works is allowed only based on a Construction Permit.

The Construction Permit is issued based on the **Urban Certificate** (UC) that sets forth the required technical parameters and approvals needed for the specific project. Whenever changing the land use is required for the project, an Urban Zoning Plan (PUZ) approval is also to be completed prior to Construction Permit Procedure.

A two stages procedure has been followed for permitting of the project: PUZ approval (stage 1) followed by Construction Permit procedure (stage 2). The permitting process followed is summarized in the two figures below.

Figure 2.1 Step 1 – Urban Zoning Plan (PUZ) Approval Procedure (SEA procedure)



As part of the PUZ Approval, a Strategic Environmental Approval (SEA) for plans and programs is to be obtained. The procedure follows the SEA Directive, transposed in Romanian legislation by governmental decision 1076/2004.

The developer obtained the UC no. 92 dated September 24, 2012 issued by the Constanta County Council for the *Preparation of the Urban Zoning (PUZ) Plan for the extension of Crucea North Wind Farm with a maximum installed power 10 MW located in the unincorporated area of Vulturu Commune.*

The developer prepared the draft PUZ and submitted it to LEPA Constanta to start the PUZ permitting procedure. The table below shows the public announcements made by the developer in the local media to inform about the start of this procedure.

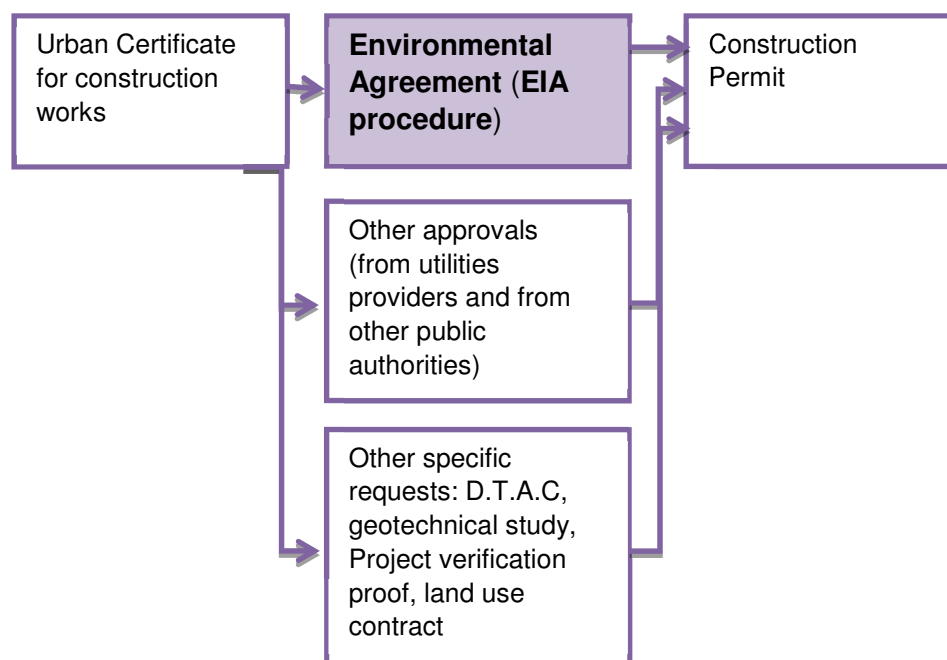
Table 2.1 ***Public announcements made by the developer in the local media according to the Romanian legal requirements of the SEA (PUZ approval) procedure***

Date of the public announcement	Name of the newspaper	Scope/content of the public announcement	Timeline for receiving public comments
October 16, 2012	<i>Liderul de opinie</i> Constanta	Announcement of the large public with regard to the submission of the application documents to the Local Environmental Protection Agency (LEPA) Constanta required to obtain the environmental approval for the PUZ prepared for the extension of Crucea North Wind Farm with a maximum installed power 10 MW located in the unincorporated area of Vulturu Commune	Public comments may be addressed to LEPA Constanta within 18 days calendar days starting with October 16, 2012
October 22, 2012	<i>Liderul de opinie</i> Constanta	Announcement of the large public with regard to the submission of the application documents to the Local Environmental Protection Agency (LEPA) Constanta required to obtain the environmental approval for the PUZ prepared for the extension of Crucea North Wind Farm maximum installed power 10 MW located in the unincorporated area of Vulturu Commune	Public comments may be addressed to LEPA Constanta within 15 days calendar days starting with October 22, 2012

The first draft of the PUZ for the extension of the Project to Vulturu Commune was submitted to LEPA Constanta with the notification registered by LEPA under no. 12630RP dated October 22, 2012.

For the other components of the Project, the developer focused on the second stage consisting in obtaining construction permits (see *Figure 2*).

Figure 2.2 Step 2 – Construction Permitting Procedure



As shown in the figure above, the permitting procedure to obtain the construction permit starts after having obtained the UC for the construction of the proposed works (as opposite to UC for PUZ approval). The list of UCs obtained for construction works is presented in the table below.

Table 2.2 List of Urban Certificates obtained by the developer since August 2012 as part of the application documents for the construction permit

UC no. and date of issue	Scope of the UC	Regulatory body issuing the UC	Purpose of the UC
no. 72 dated August 16, 2012	Connection of the substation 400/110 kV Stupina 2 located in the unincorporated area of Crucea Commune	Crucea Mayoralty	UC for construction works
no. 76 dated September 12, 2012	Construction of 20 kV connection point to supply the 400/110 kV Stupina 2 substation	Crucea Mayoralty	UC for construction works
no. 81 dated September 19, 2012	Modernization of existing exploitation road De 349 and agricultural road for plot A346/20 and connection from national road 2A, Crucea Commune	Crucea Mayoralty	UC for construction works
no. 93	Extension of Crucea North Wind Farm with a	Constanta	UC for

UC no. and date of issue	Scope of the UC	Regulatory body issuing the UC	Purpose of the UC
dated September 24, 2012	maximum installed power 10 MW located in the unincorporated area of Vulturii Commune	County Council	construction works

A full list of the Urban Certificates obtained by the developer to serve the environmental permitting procedure (and construction permitting procedure) is given in section 4.

The above-mentioned UCs laid down the obligation of the developer to approach LEPA Constanta so that this authority could decide if the proposed works fall under the incidence of the Romanian legal requirements concerning environmental impact assessment.

Wind farm projects are listed in Annex 2 of the Government Decision No. 445/2009 *on the assessment of the environmental impact of certain public and private projects*. The projects listed in Annex 2 of the Decision are subject to a screening stage conducted by LEPA to establish if they are likely to have impact on the environment. As an outcome of the screening stage, the environmental authority decides if the project is subject to environmental impact assessment and shall follow a full EIA procedure or if the project can be permitted without conducting an EIA.

The EIA Procedure is described by the Ministry Order No. 135/2010 while the Guideline for elaboration of the EIA Study is detailed in Ministry Order No. 863/2002 and by Annex 4 from the Governmental Decision No. 445/2009.

In accordance with the legal provisions laid down by the above-mentioned regulatory acts, for the proposed Project, the developer approached LEPA Constanta and applied for the environmental agreement for the Project components, as follows:

- Organization of construction compound and warehouse Crucea North (proposed to be located on plots A 302/8/1 and 302/8/2 in the unincorporated area of Crucea commune) - official letter no. 4826RP dated April 20, 2011 – *project listed in Annex 2 of GD 445/2009, screening stage required so that LEPA can decide whether an EIA needs to be conducted or not*, final decision made by LEPA Constanta was that no EIA is required.
- Connection of the 400/110 kV Stupina 2 substation to the Power Distribution Grid (official letter 6697RP dated May 31, 2012) – no EIA required.

- Modernization of existing exploitation roads, Vulturu Commune, Constanta County (official letter no. 5500RP dated June 28, 2012) – no EIA required.
- Construction of electrical and optical fiber networks for Crucea North Wind Farm, Crucea, Pantelimon and Vulturu Communes, Constanta County – official letter 6734RP dated June 1, 2012 - *project listed in Annex 2 of GD 445/2009, screening stage required so that LEPA can decide whether an EIA needs to be conducted or not*, final decision made by LEPA Constanta was that no EIA is required.
- Modernization of existing exploitation roads – exploitation road at the border of Runcu village or (De316/24), De 452/1, Pantelimon Commune, Constanta County (official letter no. 5501RP dated July 10, 2012) – no EIA required.
- Modernization of existing exploitation roads in the unincorporated areas of Crucea commune (official letter no. 5499RP dated July 16, 2012) – no EIA required.
- Connection of 400/110 kV Stupina 2 substation (located in the unincorporated area of Crucea Commune) – official letter 10834RP dated September 6, 2012 – no EIA required.
- Construction of 20 kV connection point to feed the 400/110 kV Stupina 2 substation (official letter 12706RP dated October 23, 2012) – no EIA required.
- Extension of Crucea North Wind Farm on the unincorporated areas of Vulturu Commune, Constanta County (official letter 13426RP dated November 07, 2012) – *project listed in Annex 2 of GD 445/2009, screening stage required so that LEPA can decide whether an EIA needs to be conducted or not*, final decision made by LEPA Constanta was that no EIA is required.
- Modernization of existing exploitation road and connection from national road 2A in the unincorporated areas of Crucea commune (official letter no. 13717RP dated November 14, 2012).

The environmental assessment procedures conducted in both PUZ Approval and Construction Permitting stages require public consultation and/or engagement. The flow of the legal procedures and the summary of mandatory stakeholder engagement activities conducted by the developer until end of January 2013, as part of the environmental permitting procedure, are presented in Tables 4.1 and 4.2 of this SEP.

In accordance with the relevant applicable legal provisions on the permitting of construction works, after having completed the environmental permitting procedure, by January 2013 the developer had obtained the following construction permits:

Table 2.3 **Construction permits obtained for the Project components by January 2013**

No. and date of issue	Scope of the construction permit	Issued by
no. 5 dated April 26, 2012	Organization of construction compound and warehouse Crucea North (proposed to be located on plots A 302/8/1 and 302/8/2 in the unincorporated area of Crucea commune)	Crucea Mayoralty
no. 16 dated August 31, 2012	Modernization of existing exploitation roads located in the unincorporated areas of Crucea Commune	Crucea Mayoralty
no. 7 dated August 31, 2012	Modernization of existing exploitation roads – exploitation road at the border of Runcu village or (De316/24), De 452/1, Pantelimon Commune, Constanta County	Vulturu Mayoralty
no. 28 dated September 24, 2012	Modernization of existing exploitation roads, Vulturu Commune, Constanta County	Constanta County Council
no. 25 dated December 20, 2012	Construction of 400/110 kV Stupina 2 substation on plots A718/3 + A718/4 1/2 located in the unincorporated areas of Crucea Commune	Crucea Mayoralty
no. 40 dated December 21, 2012	Construction of electrical and optical fiber networks for Crucea North Wind Farm, Crucea, Pantelimon and Vulturu Communes, Constanta County	Constanta County Council
no. 41 dated December 21, 2012	“Crucea North Wind Farm, total capacity 130 MW, amendment of diameter of the foundations, amending of capacity per turbine up to 3.6 MW, amendment of total turbine height up to 180 m and amendment of wind farm connection to the Power Distribution Grid” (amendment of technical specifications laid down in the construction permit no. 8 dated April 28, 2011), installed power of 99 MW in Crucea and Vulturu Communes, Constanta County	Constanta County Council

The list of relevant Romanian permitting regulations is included in Annex D to this report.

PROJECT STAKEHOLDERS

In order to develop an effective SEP it was necessary to determine who the stakeholders are and understand their priorities and objectives in relation to the project. According to IFC Performance Standard 1, *stakeholders are defined as persons, groups or communities external to the core operations of a project who may be affected by the project or have interest in it*. This may include individuals, businesses, communities, local government authorities, local nongovernmental and other institutions, and other interested or affected parties. Stakeholder identification broadly involves the determination of the various individuals, groups or communities who may have an interest in the project or who may affect or be affected by the project. The process of stakeholder identification includes following distinct steps:

- identification of individuals, groups, local communities and other stakeholders that may be affected by the project, positively or negatively, and directly or indirectly, particularly those directly and adversely affected by project' activities, including those who are disadvantaged or vulnerable;
- identification of broader stakeholders who may be able to influence the outcome of the project because of their knowledge about the Affected Communities or due to influence of political or other nature over them;
- identification of legitimate stakeholder representatives, including elected officials, non-elected community leaders, leaders of informal or traditional community institutions, and elders within the Affected Communities; and
- mapping of the impact zones by placing the Affected Communities, which should help the client define or refine the project' area of influence.

Stakeholder identification is an ongoing process requiring regular review and updates. In order to determine who to engage with and the approach and extent of engagement with stakeholders, *S.C. CRUCEA WIND FARM S.R.L.* has started to undertake a process of stakeholder identification and mapping. The SEP focuses specifically on providing information on when and how Project information will be disclosed to the Public and how consultation activities are planned to be carried out.

The following section provides a preliminary identification of the stakeholders involved in the Project. Consequently, the following main groups of stakeholders have been identified so far:

A: Statutory organizations and bodies which are involved in the permitting processes according to Romanian legal requirements or have other responsibilities related to the Project (see *Annex A* for contact details):

- Romanian Government/ Romanian Parliament;

- Romanian Ministry of National Defense;
- Romanian Ministry of Administration and Interior;
- Romanian Intelligence Service;
- Romanian Civil Aeronautic Authority;
- Romanian National Power Grid Company Transelectrica - Local Branch Constanta;
- The National Authority for the Regulation in the Energy Sector (**ANRE**);
- Romanian National Gas Transport Company S.N.T.G.N. Transgaz S.A. Medias;
- County Roads and Bridge Administration Constanta (R.A.J.D.P.);
- County Water Provider (R.A.J.A.) Constanta;
- The National Company for Highways and National Roads (CNADNR);
- Railways National Company – CFR – CF Constanta Branch;
- State Inspectorate in Construction;
- Romtelecom – Telecommunications Company;
- ENEL Distributie Dobrogea;
- Local Environmental Protection Agency (LEPA) Constanta;
- Environmental National Guard- County Inspectorate Constanta;
- Romanian Waters – Dobrogea- Litoral Basin Administration;
- Constanta County Council;
- Constanta County Police Inspectorate;
- Local Public Health Directorate Constanta;
- Romanian National Land Improvement Administration (NLIA), Local Branch Dobrogea, Constanta Administration Unit;
- Constanta Cadastre and Real Estate Publicity Office;
- Constanta Directorate for Culture, and National Heritage of Constanta County;
- Constanta Labour Territorial Inspectorate;
- Constanta Emergency Situation Inspectorate;
- Local and Regional Press/Media;
- Vulturu, Pantelimon and Crucea Mayoralities.

B: Research institutions and NGOs - Several research institutions and NGOs have been identified as being active in Constanta area (based on internet research, media and ERM experience with other similar project in the same region):

- National History and Archaeology Museum Constanta;
- Grigore Antipa National Museum of Natural History (Bucharest);
- The Romanian Ornithological Society (affiliate of BirdLife International);
- Romanian Bats Protection Association;
- Eco Pontica Foundation;
- NGO Oceanic Club;
- NGO Mare Nostrum;
- Danube Delta National Institute for research and development;
- “Milvus Group” Bird and Nature Protection Association;
- ECO Dobrogea Association.

In case during the implementation of this SEP, *S.C. CRUCEA WIND FARM S.R.L.* will determine that other NGOs and institutes, not identified to date, are interested in the project, its potential impacts and associated mitigation considered, these will be also consulted.

C: Land owners / Land users – *Crucea Wind Farm SRL*, the developer of the Project has already concluded contracts with all land owners and assured the permanent land plots use for the Project (required for turbine foundations, substations and transformer stations, access roads). The identification of land owners and land users, including private individuals, agricultural cooperatives, commercial farms and other users has been already performed by the developer in an earlier stage. At present, *S.C. CRUCEA WIND FARM S.R.L.* is compiling the contact details of land users (names and addresses), which may be affected by the Project, and these will be added to the list of Stakeholders (see *Annex A*).

D: Local population from nearby communes. Local population has been informed on the project via announcements posted in newspapers during the project's components permitting procedures and invited for consultation at the public debate held in Crucea Commune in 2010 (conducted as part of the EIA and AA procedures).

E: General public represented by the population living outside the communes affected by the Project (including those who are vulnerable and/or socially excluded).

F: *Internal Departments; Employees and workers; contractors / subcontractors (REIF, ENERGOBIT, VESTAS and other contractors and subcontractors); service suppliers;*

G: *International lenders/financial institutions, international parent company, shareholders*

Lenders: ERSTE, EKF, ING, Unicredit.

Shareholders: S.C. CRUCEA WIND FARM S.R.L. with the following shareholders: STEAG GmbH Headquarter (90%), Monsson Alma (10%).

H: *The media (local and regional newspapers, television, radio)*

- *Regional newspapers: Liderul de Opinie Constanta, Observator de Constanta, Flagrant, Cuget Liber de Constanta, Ziua de Constanta, Replica Constanta, Telegraf de Constanta, Atitudinea Dobrogea, Ziarul de Constanta, Tomisnews, Atac de Constanta, Constanteanul, Constanta Expres etc.;*
- *Regional and local TV stations: ProTV Constanta, Antena1 Constanta, Neptun Television etc.;*
- *Regional radio stations: Radio Romania Constanta, Radio SKY – Constanta, Radio Neptun, Radio Orizont FM – Medgidia etc.*

All the key stakeholders identified are presented above. If you are not on the list and would like to be kept informed about the company and project please use the contact details provided in section 6:

In order to determine appropriate approaches for engaging different stakeholder groups, S.C. CRUCEA WIND FARM S.R.L. and its consultants undertook an exercise to map stakeholders and understand the levels of their impact and influence, as illustrated in Annex B.

Broadly, those with the greatest impact and influence will be engaged most frequently through face-to-face meetings to ensure adequate disclosure of project information and collection of feedback.

The following section outlines the actions envisaged by S.C. CRUCEA WIND FARM S.R.L. for engaging the stakeholder groups identified.

Stakeholder identification and analysis

Stakeholder identification and analysis through a participatory stakeholder mapping exercise is critical to developing a good understanding of project stakeholders.

Site specific stakeholder mapping allows for improved understanding of:

- who is affected by the project and how;
- who the formal and informal leaders are and to what degree they are seen as representative; and
- how different stakeholders can influence the project and what risks or opportunities this presents to the Project.

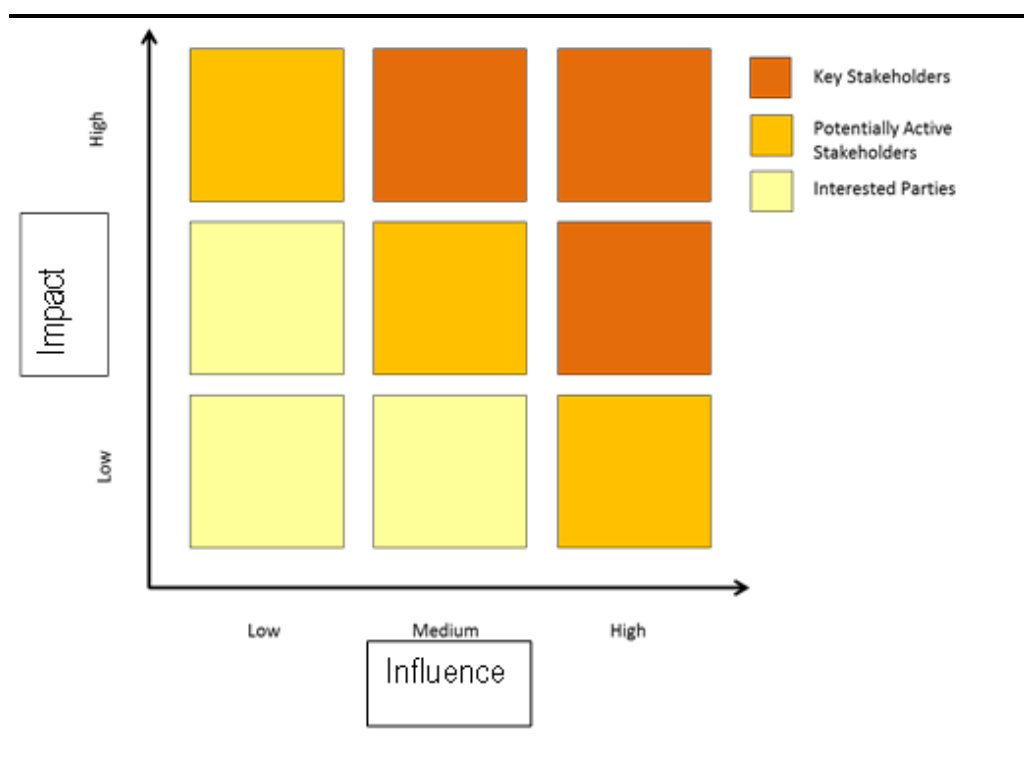
Stakeholder analysis and prioritization aim is to determine stakeholder's level of engagement. Due consideration has been given to:

- prioritization of stakeholder related issues; assessment of relevance for *Crucea Wind Farm S.R.L.* of a contact with stakeholders; assessment of timeliness to contact stakeholders;
- identification of connections and of the way stakeholders can be engaged on these issues;
- stakeholder group prioritization considering their influence on the company's actions and decisions, the importance attached by *S.C. CRUCEA WIND FARM S.R.L.* to such stakeholders and their accessibility in terms of cooperation and suggestions coming their way from the company;
- identification of the way *S.C. CRUCEA WIND FARM S.R.L.* can get involved in every issue;

The plotting of stakeholders allows for an improved understanding of the role they can play in the social context of the project, helping to define appropriate levels of engagement.

Stakeholders are mapped according to their influence and interest in the Project and according to their stance towards the Project using the matrix, presented in *Figure 3.1*.

Figure 3.1 Stakeholder mapping matrix

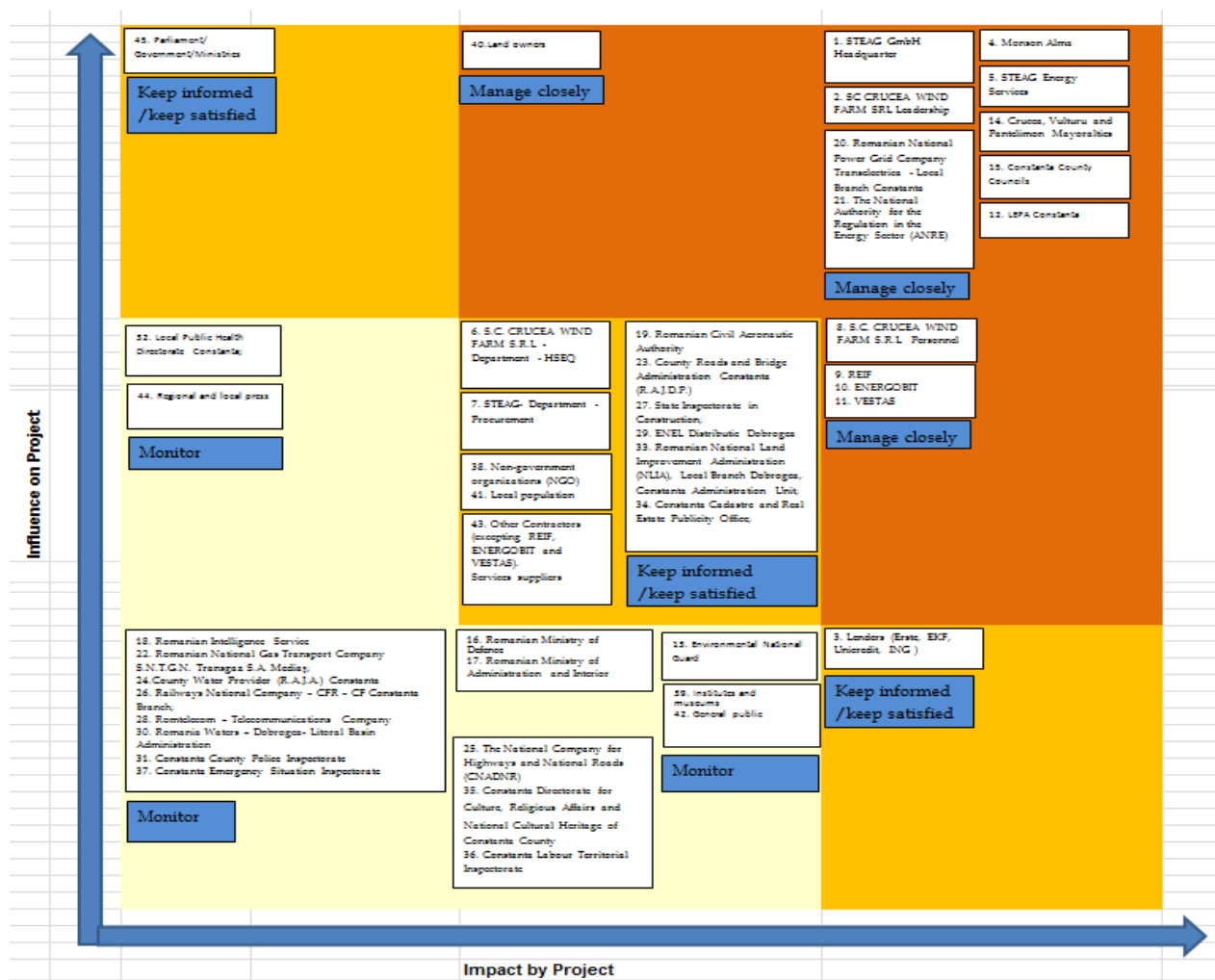


Stakeholder mapping is an on-going process with new stakeholders needing to be mapped as they are identified and other stakeholders needing to be re-evaluated as the Project progresses.

Figure 3.2 Correspondences between stakeholder group identification and analyses, stakeholder mapping matrix and the tactics for further actions to be initiated by S.C. CRUCEA WIND FARM S.R.L.

Low	1	Monitor
Medium	2	Keep informed/ satisfied
High	3	Manage closely

Figure 3.3 Crucea North Wind Farm Stakeholders Mapping Matrix



SUMMARY OF STAKEHOLDER ENGAGEMENT ACTIVITIES TO DATE

This section summarizes the stakeholder engagement activities performed to date by, during the permitting process.

By end of January 2013, the developer had issued the public announcement required as part of the PUZ approval procedure and has submitted the first draft of the PUZ to LEPA Constanta on October 15, 2012. Additionally, the Environmental Agreement no. 3/19.01.2011 was amended by LEPA Constanta (Appendix 6066/19.12.2012). The construction permits obtained to date are presented in *Table 2.3* of section 2.

For clarity purposes the engagement process carried out is presented below broken down per each completed permitting procedure.

Stakeholder engagement during SEA Procedures for PUZ Approvals

No Environmental Report (SEA Reports) was requested by LEPA Constanta as part of the PUZ approval procedures. Therefore, the public engagement during this stage has been limited to notifications and public announcements, as summarized below. The following Urban Certificates requesting PUZs have been issued to date for the Project:

A: Urban Certificates no. 363/ 28.10.2009 and no. 135 / 29.07.2010 for Crucea North Wind Farm (132 MW);

B: Urban Certificate no. 38/10.04.2012 for Crucea North Wind Farm (130 MW);

C: Urban Certificate no. 6/31.01.2012 for the construction of 400/110 KV substation and connection to 400 kV overhead line.

D: Urban Certificate no. 92/24.09.2012 for the Preparation of the Urban Zoning (PUZ) Plan for the extension of Crucea North Wind Farm with a maximum installed power 10 MW located in the unincorporated area of Vulturii Commune.

Table 4.1 **SEA Procedural steps for PUZs approval of Crucea North Project – Mandatory Stakeholder Engagement activities highlighted in red**

SEA Procedure (according to GD 1076-2004)	SEA Stages			
	Submission of Application Documents and LEPA/REPA Initial Evaluation	Screening stage	Finalizing the draft plan and drawing up of the SEA Report stage	Review of the quality of the SEA Report and decision-making stage, finalized with decision to issue the environmental approval
PUZ for 132 MW Crucea North Wind Farm (Crucea and Vulturu communes), Titleholder S.C. CRUCEA WIND FARM S.R.L.	Notification to LEPA Constanta including submission of first PUZ version, official letter no. 1085RP/28.01.2010. Public announcements in newspapers 29.01.2010 and 13-14.02.2010	Special Committee Meeting held on 07.04.2010 Screening decision for PUZ – without environmental assessment , no. unknown Public announcements: - in <i>Liderul de Opinie</i> newspaper dated 28.05.2010 ; - at the headquarters of the Commune Mayoralties: (no. 2076/27.05.2010 (Crucea) and no. 1164/27.05.2010 (Vulturu) Final Decision No. 1085RP/01.06.2010 stating that no SEA approval is needed Notification to LEPA Constanta nr. 5344RP/06.05.2011 announcing the project modifications LEPA Constanta address no. 5344RP/19.05.2011, confirming that the previous screening decision from 2010	Not applicable (procedure finalized without SEA stage)	Not applicable (procedure finalized without SEA stage)

SEA Procedure (according to GD 1076-2004)	SEA Stages			
	Submission of Application Documents and LEPA/REPA Initial Evaluation	Screening stage	Finalizing the draft plan and drawing up of the SEA Report stage	Review of the quality of the SEA Report and decision-making stage, finalized with decision to issue the environmental approval
		remains valid.		
PUZ for 130 MW Crucea North Wind Farm (Crucea, Vulturu and Pantelimon communes), Titleholder S.C. CRUCEA WIND FARM S.R.L.	Notification to LEPA Constanta including submission of first PUZ version, No. 5070 RP/24.04.2012. Public announcements in newspapers dated 23.04.2012 and 27.04.2012	Special Committee Meeting. Minutes of Meeting (MoM) no. 2378/16.05.2012 Screening decision for PUZ – without environmental assessment No. unknown (According to the Sellers, this Decision has never been communicated to the Company) Public announcements: - in newspapers from 18.05.2012 registered under No. 6183 RP; -at the headquarters of the Commune Mayoralties (No. 1462/17.05.2012 (Pantelimon), 1345/17.05.2012 (Vulturu), 2167/17.05.2012 (Crucea) Final Decision No. 5070 RP/26.05.2012 stating that neither environmental evaluation nor any adequate assessment is needed and that no SEA approval is needed. Official letter no. 9758RP/23.08.2012 amending the Decision 5070 RP/26.05.2012 – amending the coordinates of the area to be rezoned and the land use	Not applicable (procedure finalized without SEA stage)	Not applicable (procedure finalized without SEA stage)

SEA Procedure (according to GD 1076-2004)	SEA Stages			
	Submission of Application Documents and LEPA/REPA Initial Evaluation	Screening stage	Finalizing the draft plan and drawing up of the SEA Report stage	Review of the quality of the SEA Report and decision-making stage, finalized with decision to issue the environmental approval
		parameters.		
PUZ for construction of electrical station 400/110 KV and connection to 400 kV aerial line, Titleholder SC PLUSENERG S.A.	Notification to LEPA Constanta including submission of first PUZ version, No. 3294RP/14.03.2012. Public announcements in newspapers dated 06 March 2012; 12 March 2012	Special Committee Meeting. MoM no. 1540/28.03.2012 Screening decision for PUZ – without environmental assessment No. 3294 RP/02.04.2012 Public announcements: - in the newspaper dated 13.04.2012 and registered at LEPA Constanta under no. 4764 RP); Final decision (without SEA) No. 3294RP/ 9.05.2012 resuming the initial statement that no environmental evaluation or any environmental endorsement is needed. Decision 9255RP/14.08.2012 amending Decision 3294RP/ 9.05.2012 (above) in terms of land use parameters and forming an integrant part of Decision 3294RP.	Not applicable (procedure finalized without SEA stage)	Not applicable (procedure finalized without SEA stage)
PUZ for the extension of Crucea North Wind Farm with a maximum installed power 10 MW located in the unincorporated area of	Notification to LEPA Constanta including submission of first PUZ version, no. 12630RP/22.10.2012 Public announcements in	Ongoing procedure		

SEA Procedure (according to GD 1076-2004)	SEA Stages			
	Submission of Application Documents and LEPA/REPA Initial Evaluation	Screening stage	Finalizing the draft plan and drawing up of the SEA Report stage	Review of the quality of the SEA Report and decision-making stage, finalized with decision to issue the environmental approval
Vulturii Commune, Titleholder S.C. CRUCEA WIND FARM S.R.L.	<i>Liderul de opinie newspaper</i> dated 16.10.2012 and 22.10.2012			

Stakeholder engagement during Environmental Permitting Procedure

For permitting purposes, the Project has obtained the environmental agreement (in Romanian: *Acord de Mediu*) no. 3 dated 19 January 2011 for construction. Due to changes occurred in the technical details of the Project, this environmental agreement was amended by LEPA Constanta by Appendix no. 6066 dated 19 December 2012.

As described in Figure 2.2 showing the procedure of obtaining the construction permit, related to each Urban Certificate issued for construction works, an environmental impact assessment was required, following the EIA Directive procedural steps. The following Urban Certificates for construction works were issued for Crucea North Project:

A: Urban Certificate no. 4/18.01.2010 for construction of Crucea North Wind Farm (132 MW) issued by Crucea City Hall

B: Urban Certificate no. 40/10.04.2012 for Crucea North Wind Farm (130 MW)- modification of foundations diameters, turbines capacity, height regime, technical solution for wind farm connection to the Power Distribution Grid, issued by Constanta County Council

C: Urban Certificate no. 3/18.04.2012 for upgrade of existing roads, Vulturu Commune

D: Urban Certificate no. 11/05.04.2012 for upgrade of existing roads, Pantelimon Commune

E: Urban Certificate no. 24/04.04.2012 for upgrade of existing roads, Crucea Commune

F: Urban Certificate no. 27/08.11.2010 for Crucea North Construction Camp and storage area

G: Urban Certificate no. 62/29.05.2012 Construction of electrical and optic fiber network for Crucea North Wind Farm (Crucea, Vulturu and Pantelimon Commune)

H: Urban Certificate no. 19/14.03.2012 – Construction of 400/110 KV Stupina 2 Substation

I: Urban Certificate no. 51/16.05.2012 – obtained on behalf of Transelectrica in relation to the construction of a 400 kV cell in the 400 kV Stupina Substation.

J: Urban Certificate no. 72/16.08.2012 regarding the power line connecting the 400/110 kV substation and GIS cell.

K: Urban Certificate no. 76/12.09.2012 for the construction of 20 kV connection point to supply the 400/110 kV Stupina 2 substation (titleholder S.C. ENEL Distributie Dobrogea S.A. through S.C. Crucea Wind Farm S.R.L.)

L: Urban Certificate no. 81/19.09.2012 for the modernization of existing exploitation road De 349 and agricultural road for plot A346/20 and connection from national road 2A, Crucea Commune

M: Urban Certificate no. 93/24.09.2012 for the extension of Crucea North Wind Farm with a maximum installed power 10 MW, in the unincorporated area of Vulturu Commune

Table 4.2 *EIA Procedural steps followed for Project construction approval - Stakeholder Engagement activities highlighted in purple*

EIA Procedure (according to M.O. 860/2002 & M.O. 135/2010)	EIA Stages			
	Submission of Application and its Initial Evaluation	Project Screening Stage	Project Scoping Stage (including preparation of EIA Report)	Review of the quality of the EIA Report and decision-making stage
Crucea North Wind Farm (132 MW) (Urban Certificates No. No. 4/18 January 2010)	Documentation submitted to LEPA Constanta No. 1254 RP dated 01 February 2010 Initial Decision No. 1254 dated 23 June 2010 Announcements in newspaper (date 6-7 February 2010), on the city halls' board (8 February 2010)	Screening Decision requiring both AA and EIA procedures – approved– No. 1254 RP /23.06.2010 Newspaper Announcement published on 25.06.2010	EIA submission to LEPA including Appropriate Assessment (AA) Study (Registration No. 6350 /16.06.2010); Public announcement regarding organization of public hearing (posted on 20PP th PP September 2010 on the boards of the relevant city halls and in the newspaper beginning with 18-19 September 2010) Public hearing on 01.11.2010;	LEPA Decision to issue the Environmental Agreement (Registration No. unknown - the Company was not provided with the decision, but only with the Environmental Agreement (Romanian Acord de Mediu) Environmental Agreement No. 3 dated 19 January 2011
Upgrade of existing roads, Vultur Commune (Urban Certificate No. 3/18.04.2012)	Documentation submitted to LEPA Constanta registered under No. 5500 RP/ 04 May 2012. Initial Decision No. 5500 RP dated 25 May 2012. Announcements in newspaper dated 26-27 May 2012 and on city hall's board on 28 May 2012	Screening Decision – approved without EIA – No. 5500 RP/10.07.2012, based on the TAC Decision from 27 June 2012 Newspaper Announcement published on 29 June 2012	Not applicable (procedure finalized without EIA stage)	Not applicable (procedure finalized without EIA stage)
Upgrade of existing	Documentation submitted to LEPA	Screening Decision – approved	Not applicable (procedure	Not applicable

EIA Procedure (according to M.O. 860/2002 & M.O. 135/2010)	EIA Stages			
	Submission of Application and its Initial Evaluation	Project Screening Stage	Project Scoping Stage (including preparation of EIA Report)	Review of the quality of the EIA Report and decision-making stage
roads, Pantelimon Commune (Urban Certificate No. 11/05.04.2012)	Constanta registered under No. 5501 RP dated 04 May 2012. Initial Decision No. 5501 RP dated 25 May 2012 Announcements in newspaper dated 26-27 May 2012 and on city hall on 28 May 2012	without EIA – No. 5501 RP/10.07.2012, based on the TAC Decision from 27 June 2012 Newspaper Announcement published on 29 June 2012.	finalized without EIA stage)	(procedure finalized without EIA stage)
Upgrade of existing roads, Crucea Commune (Urban Certificate No. 24/04.04.2012)	Documentation submitted to LEPA Constanta registered under No. 5499 RP dated 4 May 2012 Initial Decision No. 5499 RP dated 25 May 2012 Announcements in newspaper dated 26-27 May 2012 and on 28 May on the city hall	Screening Decision – approved without EIA – No. 5499/16.07.2012, based on TAC Decision from 27 June 2012 Newspaper Announcement published on 29 June 2012	Not applicable (procedure finalized without EIA stage)	Not applicable (procedure finalized without EIA stage)
Crucea North Construction Camp and Storage Area (Urban Certificate No. 27/08.11.2010)	Documentation submitted to LEPA Constanta No. 4826 RP dated 20.04.2011 Initial Decision No. 4826/31 May 2011 according to which the Project falls under the incidence of GD 445/2009 and requires an EIA but does not require an appropriate assessment Announcements in newspaper dated 15 June 2011 and submitted	Screening Decision – approved without EIA – no 4826 RP dated 14 July 201, based on TAC Decision from 06 July 2011. Newspaper Announcement about the screening decision published on 9-10 July 2011	Not applicable (procedure finalized without EIA stage)	Not applicable (procedure finalized without EIA stage)

EIA Procedure (according to M.O. 860/2002 & M.O. 135/2010)	EIA Stages			
	Submission of Application and its Initial Evaluation	Project Screening Stage	Project Scoping Stage (including preparation of EIA Report)	Review of the quality of the EIA Report and decision-making stage
	to LEPA under no. 6926RP/16 June 2011. Public announcement register at Crucea Commune Mayorality under no. 2554 dated 15 June 2011			
Construction of electrical and optic fiber networks for Crucea North Wind Farm (Crucea, Vulturu and Pantelimon Communes)	Documentation submitted to LEPA Constanta registered under No. 6734 RP dated 1 June 2012 Initial Decision No. 6734 RP dated 26 June 2012 <i>Announcements in newspaper dated 28 June 2012.</i>	<i>Submission of Presentation Memorandum to LEPA Constanta accompanied by official letter no. 8604/16.07.2012</i> Public announcement concerning the screening decision made by LEPA Constanta registered: <ul style="list-style-type: none"> at the Pantelimon Commune Mayorality under no. 1916/01.08.2012; at the Crucea Commune Mayorality under no. 3150/01.08.2012; at the Vulturu Commune Mayorality under no. 2043/01.08.2012. The announcement was also published in <i>Liderul de opinie</i> Constanta newspaper on 1 August 2012. Screening Decision – approved	Not applicable (procedure finalized without EIA stage)	Not applicable (procedure finalized without EIA stage)

EIA Procedure (according to M.O. 860/2002 & M.O. 135/2010)	EIA Stages			
	Submission of Application and its Initial Evaluation	Project Screening Stage	Project Scoping Stage (including preparation of EIA Report)	Review of the quality of the EIA Report and decision-making stage
		<p>without EIA – No. 6734/22.08.2012Public announcement on the amended screening decision in <i>in Liderul de opinie Constanta newspaper</i> on 06.12.2012 and registered at LEPA Constanta under no. 14469 and at:</p> <ul style="list-style-type: none"> at the Pantelimon Commune Mayorality under no. 5802/06.12.2012; at the Crucea Commune Mayorality under no. 5321/06.12.2012; at the Vulturur Commune Mayorality under no. 3026/06.12.2012. <p>Amended screening decision no. 6734/18.12.2012 due to changes in the technical details of the project</p>		
Construction of 400/110 kV Stupina 2 substation	<p>Documentation submitted to LEPA Constanta registered under No. 4432 RP, 6 April 2012</p> <p>Initial Decision No. 4432 RP dated 19 April 2012.</p> <p><i>Announcements in newspaper</i></p>	<p>Screening Decision – approved without EIA – No. 4432 RP dated 2 July 2012, based on the TAC Decision from 06 June 2012</p> <p><i>Newspaper Announcement published on 8 June 2012, and announcement posted on the city</i></p>	Not applicable (procedure finalized without EIA stage)	Not applicable (procedure finalized without EIA stage)

EIA Procedure (according to M.O. 860/2002 & M.O. 135/2010)	EIA Stages			
	Submission of Application and its Initial Evaluation	Project Screening Stage	Project Scoping Stage (including preparation of EIA Report)	Review of the quality of the EIA Report and decision-making stage
	dated 5-6 May 2012	hall's board on 6PP th PP June 2012		
Connection of the Stupina 2 400/110 kV substation to the Power Distribution Grid (Crucea North Wind Farm SRL on behalf of CNTEE Transelectrica SA)	Documentation submitted to LEPA Constanta No. 6697 RP dated 31 May 2012. Initial Decision No. 6697 RP dated 26 June 2012 <i>Announcements in newspaper dated 28 June 2012.</i>	Submission of Presentation Memorandum to LEPA Constanta accompanied by official letter no. 8604/16.07.2012 Screening Decision – approved without EIA – No. 6697 dated 14 August 2012. <i>Public announcement published at Crucea Commune Mayoralty under no. 3169 and in <i>Liderul de opinie</i> Constanta newspaper on 01.08.2012 and submitted to LEPA under no. 9557/03.08.2012</i>	Not applicable (procedure finalized without EIA stage)	Not applicable (procedure finalized without EIA stage)
Crucea Nord Wind Farm (130 MW)- modification of foundations diameters, turbine power, height regime, solution for wind farm connection (Urban Certificate No. 40/10.04.2012)	Request to LEPA Constanta No. 643 dated 8 June 2012 for revision of the Environmental agreement No. 3 dated 19 January 2011 (in connection with UC No. 4/ 18 January 2010 – line 1 from the current table)	Screening Decision – approved without EIA – No. 6066 dated 19.12.2012 Public announcement concerning the decision made by LEPA Constanta to revise the Environmental Agreement no. 3/19.01.2011. This announcement was registered: • at the Pantelimon Commune Mayoralty under no. 5826/07.12.2012;	Not applicable (procedure finalized without EIA stage)	LEPA issued Appendix no. 6066/19.12.2012 to the Environmental agreement no. 3/19.01.2011 (Romanian Anexa la Acordul de Mediu)

EIA Procedure (according to M.O. 860/2002 & M.O. 135/2010)	EIA Stages			
	Submission of Application and its Initial Evaluation	Project Screening Stage	Project Scoping Stage (including preparation of EIA Report)	Review of the quality of the EIA Report and decision-making stage
		<ul style="list-style-type: none"> at the Crucea Commune Mayoralty under no. 5354/07.12.2012; at the Vulturu Commune Mayoralty under no. 3043/07.12.2012. <p>The announcement was also published in <i>Liderul de opinie</i> Constanta newspaper on 8-9 December 2012.</p>		
Connection of Stupina 2 400/110 kV substation	Documentation submitted to LEPA Constanta No. 10834 RP dated 06 September 2012;	Screening decision – approved without EIA – no. 10834/20.09.2012	Not applicable (procedure finalized without EIA stage)	Not applicable (procedure finalized without EIA stage)
Construction of 20 kV connection point to feed the 400/110 kV Stupina 2 substation	Documentation submitted to LEPA Constanta No. 12706RP dated 23 October 2012	Screening Decision No. 12706RP – approved without EIA - dated 15 November 2012	Not applicable (procedure finalized without EIA stage)	Not applicable (procedure finalized without EIA stage)
Extension of Crucea North Wind Farm with a maximum installed power 10 MW located in the unincorporated area of Vulturu Commune	Documentation submitted to LEPA Constanta No. 13426RP dated 07 November 2012 Initial decision no. 13426RP dated 13 November 2012 according to which the Project falls under the incidence of GD 445/2009 and	Screening decision no. 13426RP dated 13 November 2012 Public announcement in <i>Liderul de opinie</i> Constanta newspaper dated 23 November 2012 and at Vulturu Commune Mayoralty no. 2928/23.11.2012		

EIA Procedure (according to M.O. 860/2002 & M.O. 135/2010)	EIA Stages			
	Submission of Application and its Initial Evaluation	Project Screening Stage	Project Scoping Stage (including preparation of EIA Report)	Review of the quality of the EIA Report and decision-making stage
	requires an EIA but does not require an appropriate assessment	Presentation Memorandum submitted by official letter 13146RP/26.11.2012 Ongoing procedure		
Modernization of existing exploitation road and connection from national road 2A in the unincorporated areas	Documentation submitted to LEPA Constanta No. 13717RP dated 14 November 2012 Ongoing procedure			

The EIA Report was prepared by Mr. Tudor Darie in June 2010 and the Appropriate Assessment Report to Crucea North Wind Farm was prepared by Wildlife Management Consulting SRL in October 2010. These reports were made available for review by government agencies, NGOs and for community and public comments.

LEPA Constanta provided the public with access to Project information and the EIA documents, at request, at their office. LEPA Constanta and authorities- members of the Technical Advisory Committee (TAC) have evaluated the report and a public hearing was conducted followed by a public commenting period. It was the responsibility of LEPA Constanta and Project developer to advertise the presence of the EIA and the public participation process through the local media and council office bulletin boards.

LEPA Constanta has organized a Public Hearing, whose date and venue have been brought to the knowledge of the public at least 20 days in advance. In this respect, a public hearing was held in Crucea Commune, on November 1, 2010 and which was attended by 26 residents. The project area includes also plots of land belonging to Vulturu and Pantelimon Communes residents. No mandatory public hearings were required to be held in Vulturu and Pantelimon Communes during the permitting procedures. However, the public has been informed and invited to the hearing in Crucea Commune as the Project main affected commune.

Regarding the public hearing, it should be mentioned that the meeting was held for two projects developed by Monsson Alma:

- Crucea East Wind Farm pertaining to SC CRUCEA POWER PARK SRL;
- Crucea North Wind Farm, pertaining to SC CRUCEA WIND FARM SRL.

The public hearing attendants were the following persons:

- Mrs. Catiusa Tompos, from LEPA Constanta;
- Mrs. Mariana Sirbu, from LEPA Constanta;
- Mr. Tudor Darie, EIA assessor;
- Mr. Catalin Hodor, Wildlife Management Consulting, Biodiversity reports;
- Mrs. Luminita Aldea, from Monsson Alma;
- Mrs. Simona Lates, Eco Power;
- Mr. Mihai Sabau, Monsson Alma;
- Mrs. Loredana Voinescu, Consiliul Judetean Constanta;
- Mrs. Maria Jianu, Monsson Invest Group;
- Mr. Tiberiu Mardau, Monsson Invest Group;

- Mr. Dumitru Leciu, Crucea Mayoralty;
- Mr. Alexandru Sabau, Monsson Alma;
- Mr. Bogdan Alexandru Zlate, Monsson Alma;
- Mrs. Ana Maria Parvu, Monsson Invest Group;
- Mr. Emil Pavel, Monsson Alma;
- Mr. Schweitzen R, Monsson Alma;
- Mr. Marius Dragomir;
- Mr. Edis Bilal;
- Mr. Georgiana Datcu;
- Mr. Ciprian Baraianu;
- Mrs. Claudiu Aldea;
- Mr. Ion Cercaia;
- Mr. Ricard Gorn;
- Mr. George Vlaicu;
- Mr. Robert Manaila.

According to the Public debate Minutes of Meeting, the participants received from the representative of LEPA Constanta a brief presentation of the projects' components and their expected impacts.

Mr. Tudor Darie, EIA assessor, has concluded that the impact on the social environment will be positive and the impact of wind farms projects on the environment is much lighter than the impact of a large combustion plant.

Mr. Calin Fodir, the biodiversity assessor mentioned that, during the entire project planning stage as well as at present, the developer has been trying to avoid impacts to the Natura 2000 sites. To this purpose, following construction works, the developer will monitor the impacts on birds and protected species.

There were just two comments from the public:

- Mr. Leciu from Crucea Mayoralty mentioned he agrees with the development of the project and he considers that such projects will have a positive social impact.
- Mr. Cercaia, local resident from Crucea Commune, has mentioned that he has signed a cession and superficies contract and he agrees with the implementation of the projects.

Mrs. Tompos from LEPA Constanta has notified the audience that within 30 days, those interested can comment in writing on the environmental impact at

the LEPA Constanta. Also, she recommended the audience to disseminate information accumulated in the presentation, to all their friends and neighbors.

No voluntary engagement of NGOs, research institutes or media was conducted by *S.C. CRUCEA WIND FARM S.R.L.* or its consultants by end of January 2013. Additionally, no NGO, research institute or media had sent comments or expressed opinions during the Project's regulatory permitting procedures.

STAKEHOLDER ENGAGEMENT PROGRAMME AND TIMETABLE

Present section summarizes the engagement actions envisaged by *S.C. CRUCEA WIND FARM S.R.L.* for the Project Crucea North Wind Farm 99 MW (extension to 108 MW as option).

The proposed stakeholder engagement proposes a series of actions envisaged to ensure meaningful consultation of the stakeholders on the project.

In this respect *S.C. CRUCEA WIND FARM S.R.L.* is currently in the process of updating the existing EIA Report to include additional assessments (e.g. cumulative impacts, cultural heritage, socio-economic impacts etc.), to comply with international standards for project finance. The results of this assessment will be disclosed to the stakeholders, and *S.C. CRUCEA WIND FARM S.R.L.* will seek receiving their feedback through a series of actions and events to take place as summarized below.

Disclosure methods will be selected to meet the needs of each stakeholder group to ensure key issues are addressed from the perspective of those who have raised and are affected by them. It is expected that government officials will be consulted using a relatively technical level of presentation and discussion. Local communities are likely to be better served by less technical meetings in community centers using highly visual materials and easily understandable, non-technical language.

During the construction stage, *S.C. CRUCEA WIND FARM S.R.L.* with support from ERM envisages to organize public hearings to disclose the ESIA during July- September 2013 in the communities affected by the Project (Crucea, Vulturu and Pantelimon communes). The meetings will be announced by *S.C. CRUCEA WIND FARM S.R.L.* in the local press and on local bulletin boards/posting of notices at publicly accessible locations at least one week in advance. All the inhabitants from the villages from the vicinity of the project area will receive a short project presentation and an invitation to the public hearings, with several days in advance.

Discussions will be focused on the project components, timeline for construction, environmental features assessed, impacts identified and mitigation measures proposed, mechanism by means of which they can express their views, complaints, grievances and how these will be addressed.

Following table provides a summary of the envisaged engagement actions, including details on the information to be disclosed, venues and indicative dates of meetings and public hearings, the envisaged target stakeholders and the responsibilities for implementation.

Table 5.1 Stakeholders engagement program

Project stage	Type(s) of information disclosed	Form(s) of communication	Location and dates	Target Stakeholders	Responsibilities
Construction	Non-technical summary including key components of the Project, potential impacts during construction and operation, mitigation measures, Grievance mechanism and summary of the project ESMP, SEP.	Posters, leaflets , public announcement posed on the streets, public consultation leaflet sent by regular mail	Community center of Crucea Commune- August – September 2013	Land owners / Land users Local Population	S.C. CRUCEA WIND FARM S.R.L. with ERM support
Construction	Non-technical summary including key components of the Project, potential impacts during construction and operation, mitigation measures, Grievance mechanism and summary of the project ESMP, SEP.	Posters, leaflets , public announcement posed on the streets, public consultation leaflet sent by regular mail	Community center of Vulturu Commune- August – September 2013	Land owners / Land users Local Population	S.C. CRUCEA WIND FARM S.R.L. with ERM support
Construction	Non-technical summary including key components of the Project, potential impacts during construction and operation, mitigation measures, Grievance mechanism and summary of the project ESMP, SEP.	Posters, leaflets , public announcement posed on the streets, public consultation leaflet sent by regular mail	Community center of Pantelimon Commune- August – September 2013	Land owners / Land users Local Population	S.C. CRUCEA WIND FARM S.R.L. with ERM support
Construction	Non-technical summary including key components of the Project, potential impacts during construction and operation, mitigation measures, Grievance mechanism and summary of the project ESMP, SEP.	Presentation emailed and face to face meeting	July- August 2013	Crucea, Vulturu and Pantelimon Mayoralties	S.C. CRUCEA WIND FARM S.R.L. with ERM support
Construction	Non-technical summary including key components of the Project, potential impacts during construction and operation, mitigation measures, Grievance mechanism and summary of the project ESMP, SEP.	Face to face meeting and presentation	LEPA Constanta Office- July- August 2013	LEPA Constanta	S.C. CRUCEA WIND FARM S.R.L. with ERM support

Project stage	Type(s) of information disclosed	Form(s) of communication	Location and dates	Target Stakeholders	Responsibilities
Construction	Non-technical summary including key components of the Project, potential impacts during construction and operation, mitigation measures, Grievance mechanism and summary of the project ESMP, SEP.	Sending a short presentation of the project and its impact on environment and communities and arranging for a face to face meeting, if required	Constanta County Council Office- July - August 2013	Constanta County Council	S.C. CRUCEA WIND FARM S.R.L. with ERM support
Construction	Key components of the Project, discussion on the known archaeological sites in the Project area and chance finds procedure.	Sending a short presentation of the project and its impact on environment and communities and arranging for a face to face meeting, if required	Office of the Director/ Deputy Director of the National History and Archaeology Museum July-August 2013	National History and Archaeology Museum from Constanta	S.C. CRUCEA WIND FARM S.R.L. with ERM support
Construction	Key components of the Project, discussion of potential project impacts on bird activities and assessment methodology, summary of the project ESMP, SEP.	Public consultation leaflet emailed	July- August 2013	Grigore Antipa National Museum of Natural History	S.C. CRUCEA WIND FARM S.R.L. with ERM support
Construction	Key components of the Project, discuss potential impacts of wind turbines on bats and on the methodology used for impact assessment during construction and operation, mitigation measures, grievance mechanism, summary of the ESMP, SEP.	Public consultation leaflet emailed, face-to-face meeting if required	July- August 2013	Romanian Bats Protection Association	S.C. CRUCEA WIND FARM S.R.L. with ERM support
Construction	Key components of the Project, discuss potential impacts of wind turbines on birds and on the methodology used for impact assessment during construction and operation, mitigation measures, grievance mechanism, summary of the ESMP, SEP	Face-to-face meeting, public consultation leaflet emailed	The Romanian Ornithological Society Office – July- September 2013	The Romanian Ornithological Society (affiliate of BirdLife International);	S.C. CRUCEA WIND FARM S.R.L. with ERM support

Project stage	Type(s) of information disclosed	Form(s) of communication	Location and dates	Target Stakeholders	Responsibilities
Construction	Key components of the Project, potential impacts during construction and operation, mitigation measures, grievance mechanism, summary of the project ESMP, SEP	Face-to-face consultation meeting, invitation and public consultation leaflet email	Oceanic Club office- July- August 2013	NGO Oceanic Club	S.C. CRUCEA WIND FARM S.R.L. with ERM support
Construction	Key components of the Project, potential impacts during construction and operation, mitigation measures, grievance mechanism, summary of the project ESMP, SEP.	Public consultation leaflet emailed, face-to-face meeting	Mare Nostrum office- July- August 2013	NGO Mare Nostrum	S.C. CRUCEA WIND FARM S.R.L. with ERM support
Construction	Key components of the Project, potential impacts during construction and operation, mitigation measures, grievance mechanism, summary of the project ESMP, SEP.	Public consultation leaflet emailed, face-to-face meeting	Eco Pontica Foundation office- July- August 2013	NGO Eco Pontica Foundation	S.C. CRUCEA WIND FARM S.R.L. with ERM support
Construction	Key components of the Project, potential impacts during construction and operation, mitigation measures, grievance mechanism, summary of the project ESMP, SEP.	Public consultation leaflet emailed, face-to-face meeting	Danube Delta National Institute for Research and Development office- July- August 2013	Danube Delta National Institute for Research and Development	S.C. CRUCEA WIND FARM S.R.L. with ERM support
Construction	Key components of the Project, potential impacts during construction and operation, mitigation measures, grievance mechanism, summary of the project ESMP, SEP.	Public consultation leaflet emailed, face-to-face meeting	"Milvus Group" Bird and Nature Protection Association Office July- August 2013	"Milvus Group" Bird and Nature Protection Association	S.C. CRUCEA WIND FARM S.R.L. with ERM support
Construction	Key components of the Project, potential impacts during construction and operation, mitigation measures, grievance mechanism,	Public consultation leaflet emailed, face-to-face meeting	ECO Dobrogea Association Office - July- August	Eco Dobrogea Association	S.C. CRUCEA WIND FARM S.R.L. with ERM

Project stage	Type(s) of information disclosed	Form(s) of communication	Location and dates	Target Stakeholders	Responsibilities
	summary of the project ESMP, SEP.		2013		support
Construction	Key components of the Project, assessment of potential interference of the Project with Police activities	, presentation emailed, for announcing the dates and location for public hearings	September 2013, prior public hearings	Constanta County Police Inspectorate	S.C. CRUCEA WIND FARM S.R.L. with ERM support
Construction	Non-technical summary including Key components of the Project, potential impacts during construction and operation, mitigation measures, grievance mechanism summary of project ESMP, SEP.	, presentation emailed/face to face meetings by case	July- September 2013	Other public/NGO/auth orities Stakeholders interested in the Project and not identified prior starting consultation	S.C. CRUCEA WIND FARM S.R.L. with ERM support
Construction	Publication of the ESIA disclosure package (SEP, NTS and ESMP) on S.C. CRUCEA WIND FARM S.R.L/STEAG website	STEAG webpages NTS and SEP as hard copies at local level (local S.C. CRUCEA WIND FARM S.R.L representatives)	July 2013	All stakeholders	S.C. CRUCEA WIND FARM S.R.L.
Construction	Inform local farmers on schedule of specific construction activities which might interfere with local activities (in the affected communities only)	Announcements on the communities boards, face to face meetings if needed	As needed during entire construction stage	All stakeholders	S.C. CRUCEA WIND FARM S.R.L.
Construction	Key components of the Project, project schedule, potential impacts during construction, mitigation measures, grievance mechanism	Internal meetings with REIF, ENERGOBIT and VESTAS project managers	As needed during entire construction stage	REIF, ENERGOBIT and VESTAS	S.C. CRUCEA WIND FARM S.R.L.

Project stage	Type(s) of information disclosed	Form(s) of communication	Location and dates	Target Stakeholders	Responsibilities
Construction	Announcement of construction Programme including proposed work on local roads and transportation programme for major components to residents of Crucea, Vulturu and Pantelimon Commune.	Information board/ announcement in communities' mayor offices/ Internet- company website	Trimestral	Land owners / Land users Local Population	S.C. CRUCEA WIND FARM S.R.L.
Operation	Announcement of the Crucea North Wind Farm commissioning and start-up. Formal Notification of starting the operation of the wind farm	Internet – company website/ Local newspapers/radio/ Information board/ announcement in communities' mayor offices	At the time of starting the operation	Local and regional authorities Land owners / Land users Local Population NGOs	S.C. CRUCEA WIND FARM S.R.L.
Operation	Announcements on maintenance activities which may impact on local residents Crucea, Vulturu and Pantelimon and nearby villages	Information board/ announcements in communities' mayor offices Internet- company website	As needed during entire operation stage	Land owners / Land users Local Population	S.C. CRUCEA WIND FARM S.R.L.
During entire project life-cycle	Disclosure of all environmental and social annual reports made	Made available at the S.C. CRUCEA WIND FARM S.R.L./STEAG office and on the company's website	Annually	All identified stakeholders	S.C. CRUCEA WIND FARM S.R.L.
During entire project life-	Response to specific information requests	Regular mail, e-mail, telephone, face to face meetings, as	Continuous	All interested	S.C. CRUCEA WIND FARM

Project stage	Type(s) of information disclosed	Form(s) of communication	Location and dates	Target Stakeholders	Responsibilities
cycle		applicable		stakeholders	S.R.L.
During entire project life-cycle	Key components of the Project, project schedule, potential impacts during construction and operation, mitigation measures, grievance mechanism	Internal meetings and communication	Ongoing as needed	Employees	S.C. CRUCEA WIND FARM S.R.L. – Company management and HSE Manager

During public hearings, S.C. CRUCEA WIND FARM S.R.L. together with its consultants will prepare a list of attendees and contact details for each person, will make notes of all the questions and comments received. These will be recorded within a comments' register structured as shown in Annex E to this SEP. All questions and comments will be responded. At the extent possible the questions and comments will be answered during the meeting and when not possible the responses will be provided by e-mail or at a later stage but not later than 30 days from the public debate date.

The stakeholders' comments and observations voiced in the course of the meetings or received in written form by the company will be considered in the process of assessing the impacts and ensuring appropriate mitigation. Any valid comments and inputs will be considered in a revised version of the ESIA Report and of the Environmental and Social Management Plan (ESMP).

Only one revision of these documents will be produced, to include all the comments/inputs received during the public meetings. Any other comments/observations received along the project lifetime will be considered as part of employed mitigation, and will be captured in the later revised versions of the ESMP, if applicable.

ORGANISATION OF THE SOCIAL ENGAGEMENT ACTIVITIES – RESOURCES, RESPONSIBILITIES AND MANAGEMENT

The implementation of this SEP for the Project will be managed and monitored by the S.C. CRUCEA WIND FARM S.R.L office in the project area.

At company level, the responsibility for coordinating the external communication for the management of stakeholder engagement process in general including the implementation of this SEP rests with Communications Officer, reporting directly to general management:

Communication Officer: Mrs. Alexandra Andrei

Phone: +40 (0) 741 133 831

Mail Address: S.C. Crucea Wind Farm S.R.L., 75 Zorelelor Street, postal code 900562, Constanta City, Constanta County

E-Mail: postbox@wcn-site.ro

Mr. Adrian Simion, as **Community Liaison Officer**, will deal with the day-to-day site level engagement responsibilities and will have following main responsibilities:

- Coordinate communication with local communities
- Coordinate and follow-up on responding to comments and concerns from public
- Manage grievance mechanism locally
- Report to project manager and Communications Officer/headquarters on any community related matters
- Ensures that the Site Manager /HSE Manager will inform employees at the projects sites on SEP.

The Company can be contacted for comments and general communication in relation to the project by using following contact details:

Phone: +40 (0) 744 66 44 98

Address: S.C. Crucea Wind Farm S.R.L., 75 Zorelelor Street, postal code 900562, Constanta City, Constanta County

E-Mail: adrian.simion@monsson.eu (Cc: postbox@wcn-site.ro)

The management of S.C. CRUCEA WIND FARM S.R.L. will allocate sufficient budget and resources to ensure an adequate implementation of SEP and will empower Mrs. Alexandra Andrei (Communication Officer) by internal decision with this task.

Compensation payments are authorized by the site management and shall be done in accordance with the internal “order to pay process”, which reflects contractual limits between STEAG and SPV.

All questions and queries in relation to the project will be recorded in a comments register (Annex E) including information on how these have been addressed.

The leadership of S.C. CRUCEA WIND FARM S.R.L will make all the diligences for including the Stakeholder Engagement Programme into internal environmental management system for the Project. Therefore, the management system will include procedures for implementation of SEP, will establish clear responsibilities for the community liaison officer, will integrate and describe the steps for the grievance procedures etc.

GRIEVANCE MECHANISM

A grievance mechanism is a standard element of any international level SEP.

The grievance mechanism encompasses the procedures implemented by *S.C. CRUCEA WIND FARM S.R.L.* (with support from the shareholders STEAG and Monsson Alma) to ensure that all stakeholder complaints and grievances throughout the project lifecycle are captured and addressed in a systematic and structured manner.

This grievance mechanism will be integrated as a procedure within *CRUCEA WIND FARM S.R.L.*'s management system and the responsibilities for its implementation allocated to appropriately qualified persons.

Reporting Grievances

A grievance can be defined as an actual or perceived problem that might give grounds for complaint. As a general policy, the company will work pro-actively towards the prevention of grievances through the implementation of impact mitigation measures and community liaison activities that enable *CRUCEA WIND FARM S.R.L.* to anticipate and address potential issues before they become grievances.

Nevertheless, should grievances emerge; the company is committed to addressing these in a timely and effective manner in accordance with Romanian Law, international best practice and the company's Internal Grievance Procedure.

The Company has a Public Grievance Form, which advises those with a grievance on how they can lodge a grievance relating to the project's activities.

The Public Grievance Form to be completed should anyone wish to lodge a grievance is provided in Annex C to this SEP. It can be also found at the company's office in Constanta, the site office, on the company's website and at the Mayorality's offices in the Project area.

The Grievance Procedure will be advertised by distributing information in the local communities and encouraging people to use it. This will include:

- Posters/Announcements at the Project affected communities and project locations including project' facilities and construction camps, local municipalities offices;
- Company's website.

The actors involved in the following Grievance Mechanism are STEAG Energy Services, Monsson Alma, STEAG GmbH and S.C. Crucea Wind Farm S.R.L. (the SPV).

Steps in the Grievance Procedure

After the receipt of a grievance from a stakeholder, Crucea Wind Farm S.R.L. will proceed to address the respective grievance, is going through 5 general process steps as described hereinafter.

Start of process Triggering Event

- *Receiving and Documentation of Grievance* – The Company will receive and document the grievance.
- *Clarification of case on site* – The Community Liaison Officer will be responsible to clarify the case on site and perform required analysis (e.g., verification of transport schedules, organize measurements of affected plots, define the level of compensation due to the land owners etc.)
- *Decide* – The company will qualify the grievance (minor or major). If qualified as minor, the corrective measure will be selected. Major grievances will be addressed according to the process described at point B below.
- *Implement the corrective measure* – The Community Liaison Officer will make all the diligences to implement the solution decided during the previous stage and will document the grievance closure (if possible, with a Satisfaction Letter). All the parts involved in developing and implementing of the project (SPV, Monsoon Alma, STEAG GmbH, and STEAG Energy Services) will be informed on the grievance closure.
- *Track and Feedback* - Implemented approaches are tracked by the Community Liaison Officer regarding successful implementation, resolve of grievance and possibilities to improve the implemented approach.

End of process

However, to solve grievances as fast as possible, under consideration of company internal regulations, each grievance will be categorized as a minor or major case.

A. For minor cases (e.g. harvest damages), the grievance mechanism is a simply four step procedure as mentioned below:

A **minor case** is a grievance which can be solved by the site team with available instruments and do not need additional involvement due to restriction by competence according to internal regulations (e.g. payment limits). Examples for such cases are compensation of crop damage, cleaning of access roads etc.

The company will make all diligences to address and close the minor claims in 30 days from receiving the grievance.

B. For major cases, when solving the claims involves important resources, a longer period of time (more than 30 days) or project/project schedule changes, the grievance mechanism will consist of the following steps:

A major case is a grievance which requires involvement of the general project manager as the case cannot be solved by instruments available on site or a solution requires additional involvement of further parties e.g. for approval due to internal regulations or fixations in contracts.

The company will do all the diligences for solving the major claims in 90 days from receiving the grievance.

All the grievances will be evaluated and will be responded. Sometimes a grievance may not be connected to *S.C. CRUCEA WIND FARM S.R.L.* activity. In such a case *S.C. CRUCEA WIND FARM S.R.L.* will explain this in writing to the stakeholder and will indicate the entitled parties to be approached with the grievance. In all other cases *S.C. CRUCEA WIND FARM S.R.L.* will investigate whether the company has failed to work to its intended standard and, if the case will identify measures which might be taken to avoid similar events from occurring again in the future.

The internal process of the grievance mechanism is represented schematically in Figure 7.1 below. The flowchart shall provide the stakeholders transparency in process without more detailed explanation about each step. In general the procedure follows the five steps as mentioned above. All received grievance will be handled accordingly.

Flowchart for Processing Grievances

Process definition
Project: Wind farm Crucea North (WCN)

steag

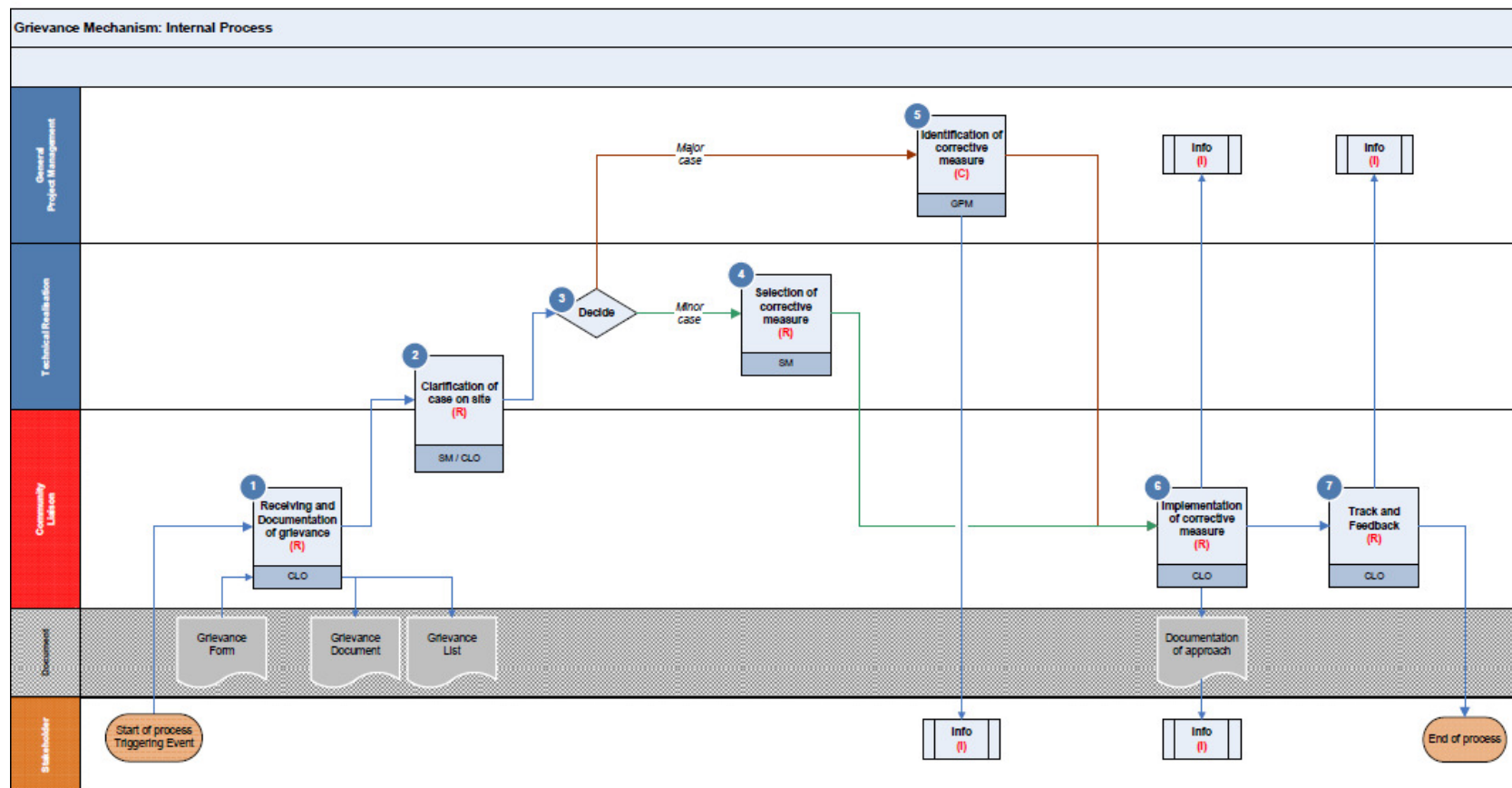


Figure 7.1

Public Grievance Leaflet

This leaflet will inform the stakeholders on how they can communicate with the Company regarding a grievance. It also sets out the steps that will be taken by *S.C. CRUCEA WIND FARM S.R.L.* to address grievances. The leaflet will be structured to include the following elements:

- Examples of potential grievances:
 - Negative impacts on individual stakeholder or community, e.g. financial loss, physical harm, nuisance from traffic or dust, crops loss due to project traffic or activities;
 - Dangers to Health & Safety or the Environment;
 - Failure to comply with standards or legal obligations;
 - Harassment of any nature;
 - Improper conduct or unethical behavior;
 - Financial malpractice or impropriety or fraud;
 - Attempts to conceal any of these.
- How to Register a Grievance?

There are several ways that a grievance can be registered, either through the Communication Officer or through the Community Liaison Officer. Contact details to be used to register a grievance are given in Section 6 of this SEP.

Confidentiality

Some grievances may be raised in confidence under this procedure. Confidential grievances will not be disclosed without the consent of the stakeholder. Details of submissions and allegations will remain secure within the company team responsible for managing the grievance procedure.

Workers' Grievances

A separate workers' grievance procedure is available for the Company's employees and its contractors. Workers will be given the possibility to lodge grievances both through workers representatives and independently, personally, regardless of the matter of the complaint.

Annex A

List of Stakeholders

List of stakeholders and contact details

Name	Contact Details
Romanian Government	<p>1 Victoriei Square, District 1 , Bucharest</p> <p>Phone: (+40) 21 314 34 00; 21 319 15 64</p> <p>Fax: (+40) 21 313 98 45</p> <p>Email: drp@gov.ro</p>
Romanian Parliament	<p>2-4 Izvor Street, 5 Sector, Bucharest</p> <p>Phone: (+40) 316 03 00; 414 11 11</p> <p>Email: presa@cdep.ro</p> <p>infocdep@cdep.ro</p>
Romanian Ministry of National Defense	<p>110, Izvor Street, 5 Sector , Bucharest</p> <p>Phone: (+40) 21 319 56 60;</p> <p>Fax: (+40) 21 319 58 64</p> <p>Email: secretariat_general@mapn.ro</p>
Romanian Ministry of Administration and Interior	<p>3, Eforie Street, 5 Sector, Bucharest</p> <p>Phone: (+40) 21 315 12 48, 21 311 08 07</p> <p>Fax: (+40) 21 312 44 21</p> <p>Email: patrimoniu.dl@mai.gov.ro</p>
Romanian Intelligence Service - Bucharest Headquarter	<p>14D, Libertatii Boulevard, 5 Sector, Bucharest</p> <p>Phone: 004 021 410 60 60</p> <p>Fax: 004 021 410 25 45</p> <p>Email: presa@sri.ro</p>
Romanian Civil Aeronautic Authority	<p>38-40, Bucharest-Ploiesti Road, 1 Sector, Bucharest</p> <p>Phone: +40 21 208 15 08</p> <p>Fax: +40 21 208 15 72; +40 21 233 40 62</p> <p>Email: dir.gen@caa.ro, secretariat@caa.ro</p>

Name	Contact Details
Romanian national Power Distribution Grid Company TRANSELECTRICA – Local Branch Constanta	195A, Alexandru Lapusneanu Boulevard, Constanta City, Constanta County Phone: +40 241 60 75 05 Fax: +40 241 60 75 50 Email: office@transelectrica.ro
ENEL Distributie Dobrogea	89A, Nicolae Iorga Street, Constanta City, Constanta County Phone: +40 241 80 59 99, 61 80 20 Fax: +40 241 61 63 40 Email: birou.presa@enel.ro
National Authority for the Regulation in the Energy Sector (ANRE)	3, Constantin Nacu Street, District 2, 020995, Bucharest Phone: +4021-311.22.44 Fax: +4021-312.43.65 Email: anre@anre.ro
Romanian National Gas Transport Company - TRANSGAZ	1, Albastra Street, Constanta City, Constanta County Phone: +40 241 58 55 91, 58 02 10 Fax: +40 241 60 72 63 Email: regconstanta@transgaz.ro
County Roads and Bridge Administration Constanta (R.A.J.D.P.)	15 A Celulozei Street, Constanta, Constanta County Phone: (+40) 241 693 523; 693527 Fax: (+40) 241 630 696 Email: rajdp@cjcl.ro; office@rajdpct.ro
National Company for Highways and National Roads (CNADNR)	38 B-dul Dinicu Golescu, 010873 , District 1, Bucharest Phone : +4021/2643261 Email: autorizatii@andnet.ro

Name	Contact Details
Railways National Company- CFR- CF Constanta Branch	10A, Al. Albastrelor, 900132, Constanta Phone: + 40241 589 840 Fax: + 40241 617 402
Constanta Local Environmental Protection Agency	23 Unirii Street, Constanta City, Constanta County Phone: (+40) 24154 66 96 Fax: (+40) 24154 65 96 Email: autorizare@mediu-constant.ro
State Inspectorate in Construction – South-East Branch	Str. Flamanda, nr. 50-52, code 900600 - Constanta Phone: +4 0241.662.737; +40241.516.139; +40241.611.607 Fax: +40241.516.104; +40241.516.105 Email: itc.sudest@isc-web.ro
Constanta County Council	51 Tomis Boulevard, Constanta City, Constanta County Phone: (+40) 241 70 84 04 Email: consjud@cjc.ro; arhsef@cjc.ro
Constanta County Police Inspectorate	106 Mamaia Boulevard, Constanta, Constanta County Phone: (+40) 241 61 13 64 Fax: (+40) 241 61 61 50 Email: cabinet@ct.politiaromana.ro
Local Public Health Directorate Constanta	1, Lacramioarei Lane, Constanta City, Constanta County Phone : (+40) 241 48 09 39 Fax: (+40) 241 48 09 46 Email: secretariat@dspct.ro

Name	Contact Details
Romanian National Land Improvement Administration (NLIA), Local Branch Dobrogea, Constanta Sud Administration Unit	4, Zburatorului Street, Constanta City, Constanta County Phone : (+40) 241 65 40 10 Fax: (+40) 241 65 64 98 Email: anif.dr@anif.ro
Constanta Cadastre and Real Estate Publicity Office	4, Ferdinand Boulevard, Constanta City, Constanta County Phone : (+40) 241 48 86 25, 48 86 26 Fax: (+40) 241 61 78 48 Email: ct@ancpi.ro
Constanta Directorate for Culture, Religious Affairs and National Cultural Heritage of Constanta County	106, Mircea cel Batran Street, Constanta City, Constanta County Phone : (+40) 241 61 30 08 Fax: (+40) 241 40 57 42 Email: contact@constanta.djc.ro
Vulturu Commune Mayoralty	Vulturu Mayoralty, 45 Eroilor Street , code 907305, Constanta County Phone: +40 241 859801 Fax: +40 241 859801 Email: primar@comunavulturu.ro
Pantelimon Commune Mayoralty	Pantelimon Mayoralty, 214 Principala street, code 907230, Constanta County Phone: (+40) 0241-874408, (+40) 0241874466 Fax: (+40) 241 87 4466 Email: pantelimon.primaria@yahoo.com

Name	Contact Details
Crucea Commune Mayoralty	Crucea Mayoralty, Constanta County 45 Soseaua Constantei Street Phone: +40241-874703, 874825 Fax: +40241 874 825 Email: primar@crucea.judetul-constantia.ro
County Water Provider RAJA Constanta	22-24 Calarasi Street, code 900590, Constanta Phone: +40 241 66 40 46 Fax: +40 241 66 25 77; +40 241 66 19 40 Email: raja1@rajac.ro
Romania Waters- Dobrogea Litoral Basin, Constanta Branch	127 Bd. Mircea cel Batran, Constanta Phone: +40241.67.30.36; +40341.40.33.00; Fax: +4 0241.67.30.25 Email: dispecer@dadl.rowater.ro
Romtelecom – Telecommunications company – Constanta Branch	79-81 Bulevardul Tomis, 900669, Constanta Phone: +40(241)611020 Fax: +40(241)515599
Other companies of public utilities active in the local communities from project' target area (water supply company, waste management, electricity, etc.)	
Labor Inspectorate Constanta	13C , Decebal Street , Constanta City, Constanta County Phone: (+40) 241 48 13 09, 69 12 54, 693951 Fax: (+40) 0241 69 43 17 For announcement of labor accidents: (+40) 241 48 13 58

Name	Contact Details
Constanta Emergency Situation Inspectorate	110 Mircea cel Batran Street, 900663 Constanta, Constanta County Phone: (+40) 241 617 381; 617 382 Fax: (+40) 241 616 342 Email: urgente@isudobrogea.ro
Environmental National Guard, County Inspectorate Constanta	23, Unirii Boulevard, Constanta City, Constanta County Phone: (+40) 241 69 09 90; 241 69 85 55 Fax: (+40) 241 69 09 90 Email: cjconstantat@gnm.ro
Mare Nostrum	296 Mamaia Boulevard, Constanta City Phone: (+40) 241 61 24 22 Fax: (+40) 241 83 10 99 Email: office@mare-nostrum.ro
Oceanic Club	41 Decebal Street, Constanta City Phone: (+40) 241 66 19 56 Fax: (+40) 341 10 15 85 Email: club@oceanic.ro
National History and Archaeology Museum Constanta	Piata Ovidiu, no. 12; Constanta City Phone: (+40) 341 40 87 39 (+40) 722 66 90 61 Email: minaconstantat@gmail.com
<i>Grigore Antipa</i> National Museum of Natural History	1 Kiseleff Road, Bucharest, district 1; Phone: (+40) 21/312.88.63 Fax: (+40) 21/312.88.63 E-mail: dmurariu@antipa.ro

Name	Contact Details
Romanian Bats Protection Association	<p>2 Ion Budai Deleanu Street, Satu-Mare, Satu-Mare County</p> <p>Phone: (+40) 261 711 395</p> <p>Email: office@aplr.ro</p>
The Romanian Ornithological Society (affiliate of BirdLifeinternational)	<p>Tulcea Branch:</p> <p>11 Gării Street, Bl. G5, Ap. 2 Code 820161, Tulcea</p> <p>Phone/Fax: +4 0240 513183</p> <p>Bucharest Office</p> <p>3 Bd. Hristo Botev, ap. 6, Code 030231, District 3, Bucharest</p> <p>Phone: +4 031 4255657</p> <p>Fax: +4031 4255656</p> <p>165 Babadag street, Tulcea 820112, Romania</p> <p>Phone (Secretary office): (+4) 0240 - 531 520</p> <p>Alternative phone numbers: (+4) 0240 - 524 546 / 524 548 / 524 550</p> <p>Fax: (+4) 0240 - 533 547</p> <p>E-mail: office@indd.tim.ro</p> <p>web page: www.ddni.ro</p>
Danube Delta National Institute for Research and Development	
"Milvus Group" Bird and Nature Protection Association	<p>540343 Tirgu Mures, Romania, Crinului St. 22</p> <p>Office: +40 265 264726</p> <p>Injured birds: +40 735878520, +40 725226173, 0720527565</p> <p>Bird ringing and recaptures: +040720537066</p> <p>Amphibian reptile rescue, rehabilitation: Sos Tibor 0735878519</p> <p>Ecological education: +40 722435905</p> <p>Media contact: +40 720018088</p> <p>office@milvus.ro</p>

Name	Contact Details
Eco Pontica Foundation	1 Grivitei Street, BL. C1 SC.A, AP 9, code 880056 – Tulcea E.mail: contact@eco-pontica.ro ; www.eco-pontica.go.ro
Eco Dobrogea Association	5 Aleea Daliei, Bl. L128A, Sc. C, Ap. 35, Constanta, Constanta County
-----	Tel.: (+40) 241 63 32 68, (+40) 341 41 32 14 (+40) 770 376368 ecodobrogea@hotmail.com -----
Liderul de Opinie	www.lideruldeopinie.ro
Observator de Constanta (daily newspaper)	46 Oborului Street, Contanta, Constanta County Phone: (+40) 241 67 21 32 Fax: (+40) 241 24 76 Email: madiafax@observator.ro www.observator.ro
Flagrant (weekly newspaper)	37A Mamaia Bvd., Constanta, Constanta County Email: office@flagrantct.ro www.flagrantct.ro
Cuget Liber de Constanta (daily newspaper)	5 I.C. Bratianu Bvd., 900711 Constanta, Constanta County Phone: (+40) 241 582 100; 582 110 Fax: (+40) 241 619 524 Email: office@cugetliber.ro www.cugetliber.ro

Name	Contact Details
Ziua de Constanta	<p>12 Trandafirului Street, 900734 Constanta, Constanta County</p> <p>Phone: (+40) 241 611 906; 341 463 823</p> <p>Fax: (+40) 241 611 905; 611 906</p> <p>Email: ziua@seanet.ro</p> <p>www.ziuaconstant.ro</p>
Replica Constanta (daily newspaper)	<p>4 Piata Farului, Bl. PF3, Constanta, Constanta County</p> <p>Phone: (+40) 241 612 330; 587 255</p> <p>Fax: (+40) 241 612 330</p> <p>Email: replicapres@yahoo.com</p> <p>www.replicaonline.ro</p>
Telegraf de Constanta (daily newspaper)	<p>296 Mamaia Blvd., Constanta, Constanta County</p> <p>Phone: (+40) 241 488 340; 488 386</p> <p>Fax: (+40) 241 831 708</p> <p>Email: office@telegrafonline.ro</p> <p>www.telegrafonline.ro</p>
Atitudinea Dobrogea (weekly newspaper)	<p>1-4 Caraiman Street, Bl. PF 6, Constanta, Constanta County</p> <p>Phone: (+40) 241 589 101; 589 102</p> <p>Fax: (+40) 241 589 102</p> <p>Email: atitudineaonline@yahoo.com</p> <p>www.atitudineaonline.ro</p>
Ziarul de Constanta	<p>Email: redactia@ziaruldeconstant.ro</p> <p>www.ziaruldeconstant.ro</p>
Tomisnews	<p>Email: redactie@tomisnews</p> <p>www.tomisnews.com</p>

Name	Contact Details
Atac de Constanta	Phone: (+40) 7227 45 484 Email: atacdeconstanta@yahoo.com www.atacdeconstanta.ro
Constanteanul	Phone: (+40) 745 80 66 10; 728 00 77 74 Email: redactia@constanteanul.com www.constanteanul.com
Constanta Expres	Email: redactia@constantaexpress.ro www.constantaexpres.ro
ProTV Constanta	Parc Mamaia Complex, Constanta, Constanta County Phone: (+40) 241 480 813 www.protv.ro
Antena 1 Constanta	1 Pescarilor Street, Constanta, Constanta County Phone/ Fax: (+40) 241 699 911; 699 922 www.antena1constant.ro
Televiziunea Neptun	296 Mamaia Blvd., 900522, Constanta, Constanta County Phone: (+40) 241 488 340; 488 341 gabriel.diceanu@ntvonline.ro www.ntvonline.ro
Radio SKY	17 Ferdinand Blvd., Floor 1, 900721 Constanta, Constanta County Phone: (+40) 241 520 818 Fax: (+40) 241 691 587 Email: office@radiosky.ro www.radiosky.ro

Name	Contact Details
Radio Romania Constanta	<p>1 Villa, Mamaia, Constanta, Constanta County</p> <p>Phone: (+40) 241 831 477; 241 831 166</p> <p>Fax: (+40) 241 831 216</p> <p>Email: stiri@radioconstanta.ro</p> <p>www.radioconstanta.ro</p>
Radio Neptun	<p>3 Ion Roata Street, Floor 2, Neptun, Constanta County</p> <p>Phone: (+40) 241 488 390</p> <p>Fax: (+40) 241 488 391</p> <p>Email: r_neptun@yahoo.com</p> <p>www.radioneptun.ro</p>
Radio Orizont	<p>Decebal Street, Medgidia, Constanta County</p> <p>Phone/ Fax: (+40) 241 820 220</p> <p>Email: contact@orizontfm.ro</p> <p>www.orizontfm.ro</p>
VESTAS	<p>11-15 Tipografilor Street, building B3, 3-rd floor, sector 1, 013714 Bucharest</p> <p>Fax: (+40) 31 403 30 99</p> <p>Email: vestas-romania@vestas.com</p> <p>www.vestas.com</p>
Energobit	<p>2D Suceava Street, 900456 Constanta, Constanta County</p> <p>Phone: (+40) 241 660 045</p> <p>Fax: (+40) 241 616 500</p> <p>Email: ebitconstantat@energobit.com</p> <p>www.energobit.com</p>

Name	Contact Details
REIF	<p>Reif Bauunternehmung GmbH & Co. KG</p> <p>Hohlohstr. 9, 76437 Rastatt, Germany</p> <p>Phone: 07222 / 508 - 0</p> <p>Fax.: 07222 / 508 - 305</p> <p>Email: info@reif-bau.de</p> <p>www.reif-bau.net</p>
EKF	<p>Lautrupsgade 11, DK-2100 Copenhagen, Denmark</p> <p>Phone: (+45) 35 46 26 00</p> <p>Fax: (+45) 35 46 26 11</p> <p>afi@ekf.dk; ekf@ekf.dk</p> <p>www.ekf.dk</p>
ING Bank	<p>Martin.van.Engen@ingbank.com</p> <p>michel.scheepens@ingbank.com</p> <p>Otilia.Wilcox@ingbank.com</p>
ERSTE Group Bank AG	<p>41-43 Mariahilfer Strasse, 1060 Vienna</p> <p>Phone: +43 (0) 50 100 10100</p> <p>Fax: +43 (0) 50 100 9 18152</p> <p>Email: Marcushinrich.Fischer@erstegroup.com</p> <p>Robert.Stritzelberger@erstegroup.com</p> <p>www.erstegroup.com</p>
Unicredit Group	<p>Andreas.Katzenberger@unicreditgroup.de</p> <p>bradley.mcaboy@unicreditgroup.de</p>

Annex B

Stakeholder Mapping

No.ID	Stakeholder	Internal / External	Stake / Interest	Influence on Project	Impact by Project
1	STEAG GmbH Headquarter	Internal	<ul style="list-style-type: none"> -Overall Project management - Handling of all contractors, excepting EPC (Engineering, Procurement and Construction) contractors - Envisions strategic fit with company programs; - Imposes production targets; - Quality check 	High	High
2	<i>S.C. CRUCEA WIND FARM S.R.L.</i> Leadership	Internal	<ul style="list-style-type: none"> - Envisions strategic fit with company programs; - Imposes production targets; - Quality check (i.e. Risk workshop, Design review, Peer Review etc) 	High	High
3	Lenders (Erste, EKF, Unicredit, ING)	External	<ul style="list-style-type: none"> - Envisions strategic fit with Lenders and IFC Performance Standards - Project financing; 	Low	High
4	Monsson Alma	External	<ul style="list-style-type: none"> - Developed the Project; - Currently owns part of the project - Supporting operation, maintenance and communication with stakeholders (authorities) and landowners as “general designer” 	High	High
5	STEAG Energy Services	Internal	<ul style="list-style-type: none"> - Responsible for technical project realization - Handling of EPC (Engineering, Procurement and Construction) Contractors 	High	High
6	<i>S.C. CRUCEA WIND FARM S.R.L.</i> - Department - HSEQ	Internal	<ul style="list-style-type: none"> - Involved in project preparation, execution, and operation phase - Provides and controls measures for safe and secure project implementation and operations 	Medium	Medium

No.ID	Stakeholder	Internal / External	Stake / Interest	Influence on Project	Impact by Project
7	STEAG- Department - Procurement	Internal	<ul style="list-style-type: none"> - Ensures availability of materials and services for project implementation and operations - Ensures best suppliers selection considering technical, HSEQ and economic criteria 	Medium	Medium
8	S.C. CRUCEA WIND FARM S.R.L. Personnel	Internal	<ul style="list-style-type: none"> - Supports project implementation; - Operates facilities after commissioning / handover by project; - Expect safe and healthy working environment; - Expect training to be able to operate new technology 	Medium	High
9	REIF	External	<ul style="list-style-type: none"> - Support project with delivery of materials / services - Earn money with offered business - Interested in extension of business - Responsible for execution of civil works project components - Assigns resources for construction activities - Ensure safe and healthy working environment; 	Medium	High
10	ENERGOBIT	External	<ul style="list-style-type: none"> - Support project with delivery of materials / services - Earn money with offered business - Interested in extension of business -Responsible for execution of electrical works project components - Assigns resources for construction activities - Ensure safe and healthy working environment; 	Medium	High
11	VESTAS	External	<ul style="list-style-type: none"> - Support project with delivery of materials / services - Earn money with offered business - Interested in extension of business - Responsible for providing qualitative wind farm main equipment in a proper time - Responsible to provide the turbines maintenance - Ensure safe and healthy working environment; 	Medium	High

No.ID	Stakeholder	Internal / External	Stake / Interest	Influence on Project	Impact by Project
12	Local Environmental Protection Agency - LEPA Constanta	External	<ul style="list-style-type: none"> - Issues permits and monitors compliance of operations - Inspects and monitors impact of project on the environment and municipality - Grants or withdraws permits for operations - Imposes measures to fulfil legal obligations (if necessary) 	High	High
13	Environmental National Guard - County Inspectorate Constanta	External	Member in all environmental permitting procedures (Technical Analyses Committee, Special Committee, Working Group) 'Perform inspections during operation phase and imposes measures to fulfil legal obligations (if necessary)	Low	Medium
14	Crucea, Vulturu and Pantelimon Mayoralties.	External	<ul style="list-style-type: none"> - Expects operations in compliance with legal and HSE regulations - Receive local taxes - Inhibits negative impact of project and operations (pollution, noise etc.) - Expects employment for local suppliers / people - Involved in permitting of the project -Involved in solving the inhabitants claims (member in the project claims committees) 	High	High
15	Constanta County Council	External	<ul style="list-style-type: none"> - Potentially implements public project in the project area - Receives taxes and royalties for energy production - Issues local legal regulations in accordance with EU, controls and monitors implementation of new regulations - Involved in permitting of the project 	High	High
16	Romanian Ministry of National Defence	External	Issue approvals requested by Urban Certificate for obtaining the Construction Permit	Low	Medium

No.ID	Stakeholder	Internal / External	Stake / Interest	Influence on Project	Impact by Project
17	Romanian Ministry of Administration and Interior	External	Issue approvals requested by Urban Certificate for obtaining the Construction Permit	Low	Medium
18	Romanian Intelligence Service	External	Issue approvals requested by Urban Certificate for obtaining the Construction Permit	Low	Low
19	Romanian Civil Aeronautic Authority	External	Issue approvals requested by Urban Certificate for obtaining the Construction Permit	Medium	Medium
20	Romanian National Power Distribution Grid Company Transelectrica - Local Branch Constanta	External	- Approve the technical documentation for connection to the Power Distribution Grid - Issue approvals requested by Urban Certificate for obtaining the Construction Permit	High	High
21	The National Authority for the Regulation in the Energy Sector (ANRE)	External	- Approve the technical documentation for connection to the Power Distribution Grid - Issue approvals requested by Urban Certificate for obtaining the Construction Permit	High	High
22	Romanian National Gas Transport Company S.N.T.G.N. Transgaz S.A. Medias;	External	Issue approvals requested by Urban Certificate for obtaining the Construction Permit	Low	Low
23	County Roads and Bridge Administration Constanta (R.A.J.D.P.)	External	Issue approvals requested by Urban Certificate for obtaining the Construction Permit	Medium	Medium

No.ID	Stakeholder	Internal / External	Stake / Interest	Influence on Project	Impact by Project
24	County Water Provider (R.A.J.A.) Constanta	External	Issue approvals requested by Urban Certificate for obtaining the Construction Permit	Low	Low
25	The National Company for Highways and National Roads (CNADNR)	External	Issue approvals requested by Urban Certificate for obtaining the Construction Permit	Low	Medium
26	Railways National Company – CFR – CF Constanta Branch;	External	Issue approvals requested by Urban Certificate for obtaining the Construction Permit	Low	Low
27	State Inspectorate in Construction;	External	Issue approvals requested by Urban Certificate for obtaining the Construction Permit Approve the technical documentations Perform inspections during construction works	Medium	Medium
28	Romtelecom – Telecommunications Company	External	Issue approvals requested by Urban Certificate for obtaining the Construction Permit	Low	Low
29	ENEL Distributie Dobrogea;	External	Issue approvals requested by Urban Certificate for obtaining the Construction Permit	Medium	Medium
30	Romania Waters – Dobrogea- Litoral Basin Administration	External	- Issue approvals requested by Urban Certificate for obtaining the Construction Permit - Member in all environmental permitting procedures (Technical Analyses Committee, Special Committee, Working Group)	Low	Low

No.ID	Stakeholder	Internal / External	Stake / Interest	Influence on Project	Impact by Project
31	Constanta County Police Inspectorate	External	Involved in organization of Public Debates/hearings	Low	Low
32	Local Public Health Directorate Constanta;	External	- Issue approvals requested by Urban Certificate for obtaining the Construction Permit - Member in all environmental permitting procedures (Technical Analyses Committee, Special Committee, Working Group)	Medium	Low
33	Romanian National Land Improvement Administration (NLIA), Local Branch Dobrogea, Constanta Administration Unit;	External	- Issue approvals requested by Urban Certificate for obtaining the Construction Permit - Approve the technical documentations	Medium	Medium
34	Constanta Cadastre and Real Estate Publicity Office;	External	- Issue approvals requested by Urban Certificate for obtaining the Construction Permit - Approve the technical documentations - Involved in solving the inhabitants claims (member in the project claims committees)	Medium	Medium
35	Constanta Directorate for Culture, Religious Affairs and National Cultural Heritage of Constanta County	External	- Issue approvals requested by Urban Certificate for obtaining the Construction Permit - Involved during construction works for periodically surveys -Involved during construction for following the Find chance procedure	Low	Medium
36	Constanta Labour Territorial Inspectorate	External	-Involved at county level in retrenchments, training, employment and social policy, other procedures and policies -Member in environmental permitting procedures (Technical Analyses Committee, Special Committee, Working Group) -Perform inspections during construction and operation phase and imposes measures to fulfil legal obligations (if necessary) -Responsible with verifying the health and safety working conditions for project personnel and subcontractors	Low	Medium

No.ID	Stakeholder	Internal / External	Stake / Interest	Influence on Project	Impact by Project
37	Constanta Emergency Situation Inspectorate	External	<ul style="list-style-type: none"> -Member in environmental permitting procedures (Technical Analyses Committee, Special Committee, Working Group) -May perform inspections during construction and operation phase and imposes measures to fulfil legal obligations (if necessary) -Responsible with verifying the safety site conditions and fire fighting measures 	Low	Low
38	Non-government organizations (NGO)	External	<ul style="list-style-type: none"> - Represent special interest groups - Influences communities and working personnel - Interferes in project and operations in the area 	Medium	Medium
39	Institutes and museums	External	<ul style="list-style-type: none"> - Represent special interest groups - Provide expertise - May influences communities and working personnel - Interferes in project and operations in the area 	Low	Medium
40	Land owners	External	<ul style="list-style-type: none"> - Owner of land which are of interest for the project development - Expect reimbursement for land rental by <i>S.C. CRUCEA WIND FARM S.R.L.</i> 	High	Medium
41	Local population	External	<ul style="list-style-type: none"> - Inhabitants of Vulturu, Pantelimon and Crucea communes which are interest and potentially affected for the project development - Expect increase of commune income - Expect employment of local people or local companies - expect involvement in community project financing 	Medium	Medium
42	General public	External	<ul style="list-style-type: none"> - Inhabitants of other localities or areas - Interest in general in wind farms project and their impact on communities and environment 		Medium

No.ID	Stakeholder	Internal / External	Stake / Interest	Influence on Project	Impact by Project
43	Other Contractors (excepting REIF, ENERGOBIT and VESTAS). Services suppliers	External	- Support project with delivery of materials / services - Earn money with offered business - Interested in extension of business	Medium	Medium
44	Regional and local press	External	- May represent special interest groups - Influences communities and working personnel -May form opinions	Medium	Low
45	Government /Ministries/Parliament	External	- Issues national legal regulations in accordance with EU, controls and monitors implementation of new regulations - Potentially implements public major project in the project area	High	Low

Annex C

Public Grievance Form

PUBLIC GRIEVANCE FORM

Reference No:	
Full Name	
Contact Information Please mark how you wish to be contacted (mail, telephone, e-mail).	By Post: Please provide mailing address: _____ _____ _____ By Telephone: _____ By E-mail _____
Preferred Language for communication	Romanian Other, please specify: _____
Description of Incident or Grievance:	What happened? Where did it happen? Who did it happen to? What is the result of the problem?
Date of Incident/Grievance	
	One time incident/grievance (date _____) Happened more than once (how many times? _____) On-going (currently experiencing problem)
What would you like to see happen to resolve the problem?	

Signature: _____

Date: _____

Please return this form to: Mr. Adrian Simion

Community Liaison Officer

Phone: +40 (0) 744 66 44 98

E-Mail: adrian.simion@monsson.eu

CC: postbox@wcn-site.ro

Address: S.C. Crucea Wind Farm S.R.L., 75 Zorelelor Street, postal code 900562,
Constanta City, Constanta County

We will register your complaint and respond to you within 30 days and provide you with a contact telephone number

Annex D

List of Relevant Romanian Environmental Permitting Regulations

Legislation/Relevant Plans	No./Date	Purpose/Scope
Environmental Protection Law	Law No. 265/2006 amending GEO No. 195/2005	Sets up the permitting framework (including EIA).
Assessment of the effects of certain plans and programmes on the environment (SEA)	Government Decision No. 1076/2004	Defines the plans/programs for which a Strategic Environmental Assessment is required. Transposes the EU Directive 2001/42/EC (SEA Directive). Sets the framework procedure for the environmental assessment applied in issuing environmental agreements for plans and programs involving potential significant environmental impacts.
Guideline for SEA	Ministry Order No. 117/2006	Guideline for implementation of SEA Directive and following SEA procedure for plans and programs
Public involvement in SEA Procedure	Government Decision No. 564/2006	Establish the framework procedure for public participation in drawing up of certain plans and programs in relation to the environment
Application methodology for the Environmental Impact Assessment (EIA) Procedure for public and private projects	Ministerial Order No. 135/2010	Regulates the procedure for issuing of Development Agreement, respectively the procedure for application and issuing of the Environmental Agreement
Impact Assessment for certain public and private projects	Government Decision No. 445/2009	Defines the projects for which an Environmental Impact Assessment is needed. Transposes the EU Directive 85/337/EEC and respectively 97/11/EC for EIA, as well as Directive 2003/35/EC related to public participation and respectively Directives 85/337/EEC and 96/61/EC.
Guidelines for EIA	Ministerial Order No. 863/26 September 2002	Guidelines for the EIA screening and scoping and review, based on EU Directives edited by the DG Environment.

Legislation/Relevant Plans	No./Date	Purpose/Scope
EIA procedure in a transboundary context	Ministerial Order No. 864/26 September 2002	Establishes the EIA procedures in a transboundary context and those of public participation in decision making regarding projects with transboundary impacts, and the list of projects included in Annex No. 1 of the Convention on transboundary EIA ratified by Law No. 22/2001 Appropriate assessment of potential effects of plans or projects on natural areas protected of UE interest.
Appropriate Assessment Procedure	Ministry Order. No 19/2010	

Annex E

Template of the comments register

No.	Name	Identification date	Contact details: address, phone numbers, e-mail address	Question/comment	Response (Who provided the response and the content of the response)	Responsibility and timeline for follow up actions/answers