



ACWA POWER ELECTRICITY OPERATION AND
MANAGEMENT INDUSTRY AND TRADE CO.



ACWA POWER KIRIKKALE NATURAL GAS COMBINED CYCLE POWER PLANT AND OVERHEAD TRANSMISSION LINE PROJECT STAKEHOLDER ENGAGEMENT PLAN



MGS PROJECT CONSULTANCY ENGINEERING TRADE CO.

ANKARA – JUNE/2014

PROJECT NAME

ACWA POWER KIRIKKALE NATURAL GAS COMBINED CYCLE POWER PLANT AND
OVERHEAD TRANSMISSION LINE PROJECT

PROJECT LOCATION

Kırıkkale Province, Yahşihan County, Kılıçlar Municipality

PROJECT OWNER

- ACWA POWER ELECTRICITY OPERATION AND MANAGEMENT INDUSTRY
AND TRADE CO.

ADDRESS : Teşvikiye Cad. Teşvikiye Palas No:23-2
Nişantaşı 34365 İstanbul/TURKİYE

TEL / FAX : +90 212 259 33 96 / +90 212 259 33 97

COMPANY PREPARED STAKEHOLDER ENGAGEMENT PLAN

- MGS PROJECT CONSULTANCY ENGINEERING TRADE CO.

ADDRESS : Şehit Cevdet Özdemir Mah. Öveçler 4. Cad, 1351. (Eski 203.) Sk.
No:1/7, 06460 Çankaya Ankara / TURKEY

TEL / FAX : +90 312 479 84 00 / +90 312 479 84 99

STAKEHOLDER ENGAGEMENT PLAN
DATE / REVISION
26.06.2014 / 03

This report has been prepared as part of public disclosure on Stakeholder Engagement requirements of EBRD, IFC and KEXIM. The report is not available for any other purposes and all rights are reserved. This English report is a translated version of the Turkish report. In case of contradiction or discrepancy the Turkish version shall prevail.

CONTENTS

SECTION I: INTRODUCTION	5
SECTION II: PROJECT DESCRIPTION	6
Section II.1. Project Definition	6
Section II.2. Project Area	8
Section II.3. Land Acquisition	11
SECTION III: STAKEHOLDER ENGAGEMENT PLAN REQUIREMENTS	11
Section III. 1. Turkish Environmental Legislation Requirements	11
Section III. 2. European Bank for Reconstruction and Development Performance Requirements	14
SECTION IV: SCOPE OF THE STAKEHOLDER ENGAGEMENT PLAN.....	15
Section IV.1. Prior Consultations Before ESIA Process	15
Section IV. 2. Stakeholder Identification and Analysis	15
Section IV. 3. Stakeholder Engagement and Informing Activities	22
Section IV. 4. Grievance Mechanism	26

TABLE LIST

Table 1. The Nearest Residential Areas to the Power Plant.....	9
Table 2. The Nearest Residential Areas to the Power Plant.....	9
Table 3. Stakeholder Description Table for Power Plant and Their Invitation Details.....	19
Table 4. Stakeholder Description Table for Overhead Transmission Line	21
Table 5. Stakeholder Participation and Disclosure Activities Program for Power Plant Project	25
Table 6. List of Addresses in Which the Documents are Available	29

FIGURE LIST

Figure 1. Representative Picture of the ACWA Power Kırıkkale Natural Gas Combined Cycle Plant	6
Figure 2. The closest residential areas.....	7
Figure 3. Satellite Image of Project Area.....	8
Figure 4. Satellite Image of Overhead Transmission Line	10
Figure 5. EIA Process Flow Chart	12
Figure 6. Stakeholder Table.....	18

APPENDIXES

APPENDIX – 1 :	Site Location Map
APPENDIX – 2 :	1/25.000 Scaled Topographic Map and Layout
APPENDIX – 3 :	Brochure
APPENDIX – 4 :	Meeting Photos
APPENDIX – 5 :	Meeting Notes
APPENDIX – 6 :	Newspapers
APPENDIX – 7 :	Invitation Document

ABBREVIATIONS

CSO	Civil Society Network
EBRD	European Bank of Reconstruction and Development
EIA	Environmental Impact Assessment
ESIA	Environmental and Social Impact Assessment Report
ESMMP	Environmental and Social Management and Monitoring Plan
EU	European Union
GWh	Gigawatt hour
HSE	Health Safety Environment
IFC	International Finance Corporation
KEXIM	Korea Kexim Bank
kV	Kilovolt
MWe	Megawatt Electrical
MWm	Megawatt Mechanical
MWt	Megawatt Thermal
NGCCPP	Natural Gas Combined Cycle Power Plant
NGO	Non-Governmental Organization
NTS	Non-technical Summary
PR	Performance Requirements
SEP	Stakeholder Engagement Plan
TEİAŞ	Turkish Electricity Transmission Company
OHTL	Overhead Transmission Line

SECTION I: INTRODUCTION

ACWA Power plan to install and operate ACWA Power Kırıkkale Natural Gas Combined Cycle Power Plant (NGCCPP) with 927.4 MW_e installed power within the boundaries of Kılıçlar Municipality in Kırıkkale Province at Yahşihan County.

The project configuration is expected to consist of two Gas Turbines and one Steam Turbine. Estimated Installed capacity of the power plant is 927.4 MW_e/ 960 MW_m/ 1663 MW_t output. Estimated annual natural gas consumption is 1,250,000,000 m³. The estimated annual electricity generation of the project is 7,557 GWh. According to Environmental Impact Assessment Regulation published in the Official Gazette No. 26939 and dated 17.07.2008, Environmental Impact Assessment Report is being prepared and was submitted to the Ministry of Environmental and Urbanization.

This Stakeholder Engagement Plan (SEP) for ACWA Power Kırıkkale NGCCPP and Overhead Transmission Line project has been prepared to document the methods and process by which local communities, stakeholders and interested parties are consulted in relation to the proposed power plant project. SEP is a living document that will be updated when it is needed. This document outlines the means and locations of information disclosure, and the grievance mechanism by which stakeholders and / or interested parties can raise their concerns and observations.

According to Article 9 of EIA Regulation, published in the Official Gazette No. 26939 and dated 17.07.2008; Public Participation Meeting (PPM) was organized to receive public comments and suggestions on 23 May 2013 at 2:00 pm in Coffee House of Kılıçlar Municipality. Approximately, 30 people attended to PPM. For the energy transmission line, two public participation meetings were held at Ankara/Çubuk and Kırıkkale/Yahşihan on 12 August 2013 and 13 August 2013, respectively. The SEP is a continuous process to update the Stakeholders and interested parties and to receive their feedback and comments regarding their concerns on Environmental and Social issues. Further public consultations can be anticipated for this project if found necessarily. There will be a 60 day comment period on environmental and social impacts and mitigation measures.

The SEP for this project has been prepared and revised in accordance with best international practice as summarized in the European Bank for Reconstruction and Development (EBRD) Performance Requirement 10 on Stakeholder Engagement and Information Disclosure and related IFC Performance Standard and KEXIM requirements.

SECTION II: PROJECT DESCRIPTION

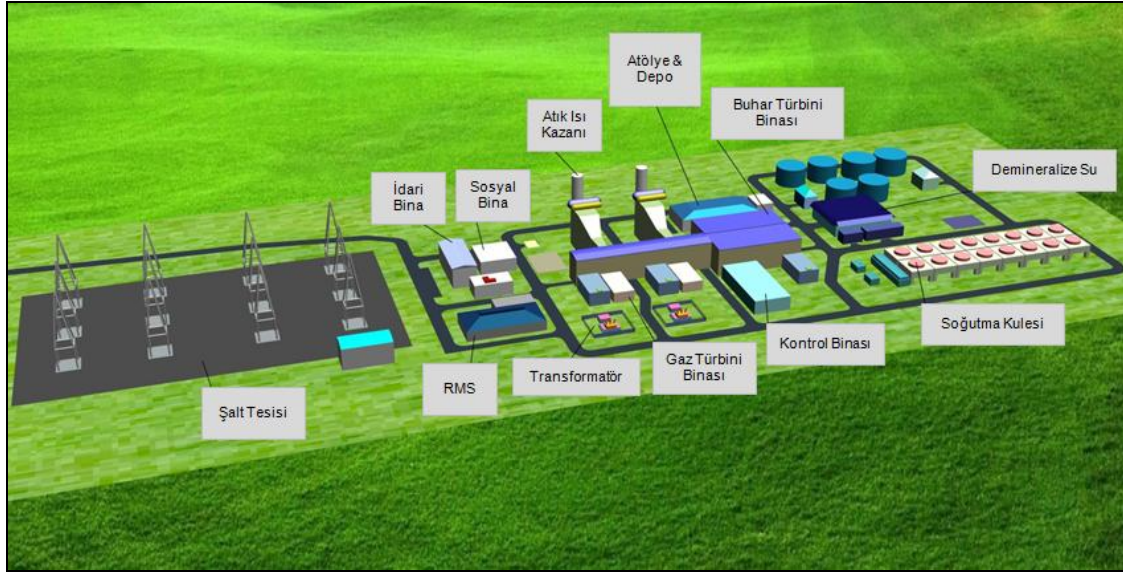


Figure 1. Representative Picture of the ACWA Power Kırıkkale Natural Gas Combined Cycle Plant

Section II.1. Project Definition

The plant is a state of the art natural gas fired combined cycle power plant. The typical configuration is of two gas turbines, two heat recovery steam generators, and a steam turbine. In CCPP, the gas turbines will produce electricity, and the heat recovery steam generators will utilize the waste heat from the gas turbines to produce steam that is needed by the steam turbine to generate additional electricity.

2 +1 (2 gas turbines and one steam turbine) are planned for ACWA Power Kırıkkale NGCCPP. Total thermal power of gas turbines will be about $(309.6 \times 2) / 0.3723 = 1,663$ MWt. The project is scheduled for steam turbine power of 328 MW.

A temporary construction camp is planned to be built within the Power Plant project area for an average of 500 construction workers during the anticipated 30 months period to build the Plant. The designated project area for the Power Plant site is large enough for the plant construction, lay down area and temporary construction camp. All technical and social infrastructure needs of the staff such as dining hall, kitchen, locker space, shower, toilet, sink, and storage, administrative and technical offices will be located within determined project area

Workers are planning to be preferred primarily from local people living in surrounding of Project area. In case of staff from residential areas request accommodation in their dwellings and/or if construction conditions are appropriate, service vehicles may be used for transportation.

Service will be provided in daytime and evening hours for transportation of workers to the city center (Kırıkkale) during their off days. Hence, workers will have the opportunity to meet their special needs.

Any villages do not exist in the surrounding of the road from power plant to the main road which will be used during construction and operation activities. Therefore, local public transport is not anticipated to be affected negatively. The main road is the Ankara-Kırıkkale express way which is also highly crowded way. The following figure shows the closest residential areas to project area.

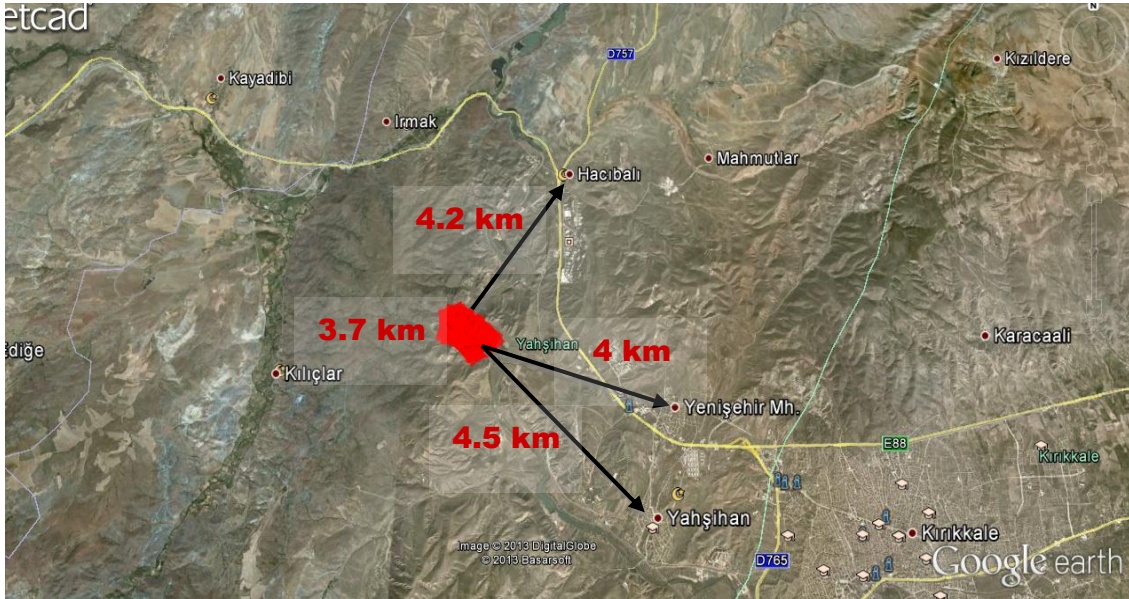


Figure 2. The closest residential areas

Overhead transmission line was planned for the transmission of the electricity produced at power plant. OHTL will connect power plant to Baglum Substation which is located at Ankara. Planned line has 380 kV voltage and 114 km length. Approximately 7 km of the line passes through Kırıkkale province and 107 km of the line passes through Ankara province.

Energy Transmission Line is contained in the list of ANNEX – I with Title of The Projects Subject To Environmental Impact Assessment in “Article – 32 154 kV (kilovolt) and above voltage power transmission facilities (transmission line, substations and switching fields) longer than 15 km” of “Environmental Impact Assessment (EIA) Regulation” which took effect upon being published in Official Gazette numbered 28784 and dated 03.10.2013. In this context of the regulation, final “Environmental Impact Assessment Report for Energy Transmission Line” has been submitted to Ministry of Environment and Urbanization on 20.11.2013.

Section II.2. Project Area

The total area of the ACWA Power NGCCPP project is about 185,480 m². The average elevation of the land is about 690 m, maximum elevation is 716 m and minimum elevation is 677 m.

The Power Plant will be constructed on an area of approximately 185,480 m² with the remaining land to be landscaped or restored to native habitat as much as possible.

There is no agricultural activity on project site. However, there are some agriculture lands adjacent to the existing access road leading to the project site. As per new updated information available to the project company most of the area belongs to governmental treasury but there is a small private ownership area. This area will be expropriate by direct negotiation and other legal procedures according to expropriate law in forced.

Site location map of the project site and surrounding areas is shown in Appendix-1.

Power Plant project area and nearby residential areas are shown in the Topographic Map and Layout scaled 1/25,000 and provided in Appendix-2.

Access to the power plant project area is via Ankara-Kırıkkale highway road E88 in all seasons. Project area is about 13 km away from Kırıkkale City Center.



Figure 3. Satellite Image of Project Area

The closest residential areas to the project site are described in Table 1 and in Figure 2. These areas are also shown on the site location map. (Appendix-1)

Table 1. The Nearest Residential Areas to the Power Plant

Residential Area	Location According to the Project Area	Approximate Distance (m)
Hacıbalı Village	North East	4,200
Yenişehir District	South East	4,000
Kılıçlar Municipality	West	3,700
Yahşihan Municipality	South East	4,500

Closest residential areas are given at Table 2 and Satellite Image is given at Figure 4.

Table 2. The Nearest Residential Areas to the OHTL

Province	District	Quarter-Village	Direction According to Route	Route Distance (m)
Kırıkkale	Yahşihan	Yenişehir Quarter Industrial	South, North	180
Kırıkkale	Yahşihan	Hacıbalı Village	North, East, West	2,500
Kırıkkale	Yahşihan	Mahmutlar Village	West	1,000
Ankara	Kalecik	Samanlık Village Yukarı Samanlık Quarter	West	650
Ankara	Kalecik	Samanlık Village Aşağı Samanlık Quarter	West	1,200
Ankara	Kalecik	Gökdere Village	West	740
Ankara	Kalecik	Gümüşpınar Village	East	1,000
Ankara	Kalecik	Keklicecek Village	East	1,300
Ankara	Kalecik	Hacı Village	NorthWest	550
Ankara	Kalecik	Kılıcak Village	NorthWest	1,100
Ankara	Kalecik	Değirmenkaya Village	Southeast	1,050
Ankara	Kalecik	Hasayaz Village	SouthWest	830
Ankara	Kalecik	Yeşilöz Village	NorthEast	1,540
Ankara	Kalecik	Tavşancık Village	NorthEast	980
Ankara	Çubuk	Karaali Quarter	West	350
Ankara	Çubuk	Camili Village	SouthWest	1,800
Ankara	Çubuk	Oylumiğde Village	NorthEast	1,870
Ankara	Çubuk	Demirci Village	NorthEast	2,160
Ankara	Çubuk	Kuyumcu Village	SouthWest	980
Ankara	Çubuk	Meşe Yaylası	NorthEast	1,600
Ankara	Çubuk	Susuz Village	South	1,160
Ankara	Çubuk	Yukarı Çavundur Village Kuruca Quarter	North	1,450
Ankara	Çubuk	Çit Village	North	500
Ankara	Çubuk	Sele Village	South	1,050
Ankara	Çubuk	Sarıkoz Village	NorthWest	1,000
Ankara	Çubuk	Yazlıca Village	Southeast	830
Ankara	Çubuk	Saraycık Village	NorthWest	2,000
Ankara	Çubuk	Karaman Village	Southeast	1,200
Ankara	Çubuk	Ovacık Village	NorthWest	1,600
Ankara	Çubuk	Karaağaç Village	Southeast	2,200
Ankara	Çubuk	Karaağaç Village Sülüklü Quarter	Southeast	850
Ankara	Çubuk	Eğrikin Village	Southeast	1,470
Ankara	Çubuk	Yukarı Obruk Village	NorthWest	420

ACWA POWER KIRIKKALE NATURAL GAS COMBINED CYCLE POWER PLANT PROJECT
STAKEHOLDER ENGAGEMENT PLAN

Ankara	Çubuk	Aşağı Obruk Village	Southeast	1,110
Ankara	Çubuk	Siğirlihan Village	Southeast	2,200
Ankara	Çubuk	Tuğlaköy	NorthWest	960
Ankara	Çubuk	Kutuören Village	Southeast	2,500
Ankara	Pursaklar	Gümüşyayla Village Taşkesen Quarter	Southeast	1500
Ankara	Pursaklar	Gümüşyayla Village	NorthWest	720
Ankara	Pursaklar	Yuva Village	Southeast	630
Ankara	Pursaklar	Sirkeli Yeşilyurt Quarter	Southeast	1,700
Ankara	Pursaklar	Yeşilova Quarter	Southeast	2,300
Ankara	Keçiören	Çalseki Village	NorthWest	1,400
Ankara	Pursaklar	Başpınar Mevkii	Southeast	750
Ankara	Yenimahalle	Yakacık Households	SouthWest	1,650
Ankara	Keçiören	Bağlum	Southeast	2,300

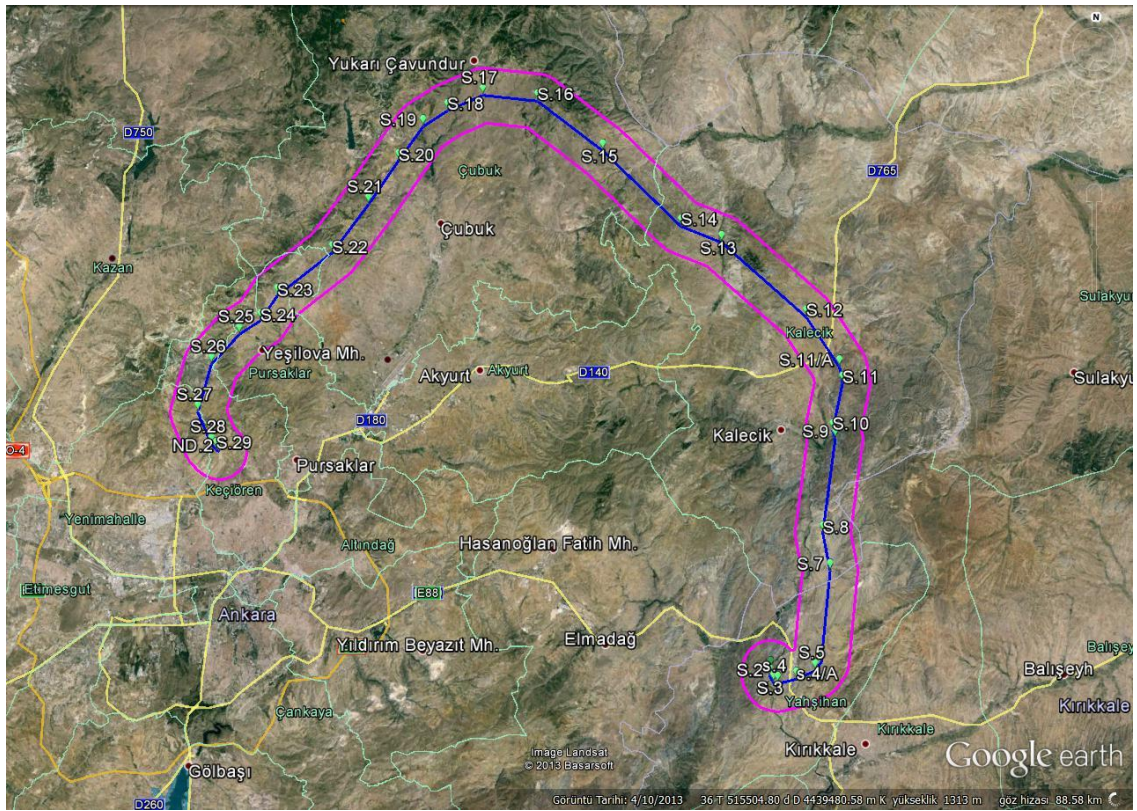


Figure 4. Satellite Image of Overhead Transmission Line

Section II.3. Land Acquisition

Most of the area belongs to governmental treasury at project site but there is a small private ownership area. This area will be expropriate by direct negotiation and other legal procedures according to expropriate law in forced.

No residential properties exist within the project footprint or adjacent to the access road and consequently there will be no requirement for Resettlement Action Plan (RAP). The Plant site is not used for any agricultural activities, however, on rare cases it can be observed that the land is been used for sheep grazing.

The access road to the project site may be upgraded to meet construction and operation requirements. As a result landowners adjacent to the route were invited to participate in the consultation process. In case of any land acquisition/expropriation need, Turkish regulations, IFC and EBRD requirements will be followed.

For the widening of access road, Passage Way Permission Certificate will be taken from General Directorate for Highways in the direction of Regulation on Facilities to be Built and to be Opened in the Edge of Highways published in the Official Gazette No. 22990 dated 15.05.1997. After construction period of the project, this new road will be assigned to the Municipality and people therefore will benefit from the upgrading. This access road will remain open to the public use through the construction period.

An expropriation plan will be prepared by ACWA Power to address the issues that might arise from upgrading this road. In the event a mutual agreement regarding compensation could not be reached, an alternative is an appropriate arbitrator will be appointed by the court.

Similarly, for energy transmission line, expropriation plan prepared by TEİAŞ will be carried out. Land owners are not expected to encounter difficulties and to be affected economic or social aspects. At this stage, route is determined according to IFC, EBRD and KEXIM requirements in order to minimize environmental and social effects of the project. Land owners are not expected to be adversely affected regarding transmission lines.

SECTION III: STAKEHOLDER ENGAGEMENT PLAN REQUIREMENTS

Section III. 1. Turkish Environmental Legislation Requirements

According to Environmental Impact Assessment (EIA) Regulation, institutions, organizations and businesses are divided into two groups according to polluting qualities. Higher pollutant attribute plants are included in Annex-1 List and EIA Report is prepared for these facilities to carry out the EIA process.

ACWA Power Kırıkkale Natural Gas Combined Cycle Power Plant Project and Overhead Transmission Line Project are evaluated in;

Annex-1, Article 2.a. Thermal power plants: thermal power of 300 MWt (megawatt thermal) and further evaluated and other combustion systems

Annex-1, Article 32. Energy Transmission Line longer than 15 kilometers and over 154 kV voltage (Energy Transmission Line, Substation, Switchyard).

Accordingly the EIA process has begun and following flow diagram shall be followed during EIA process.

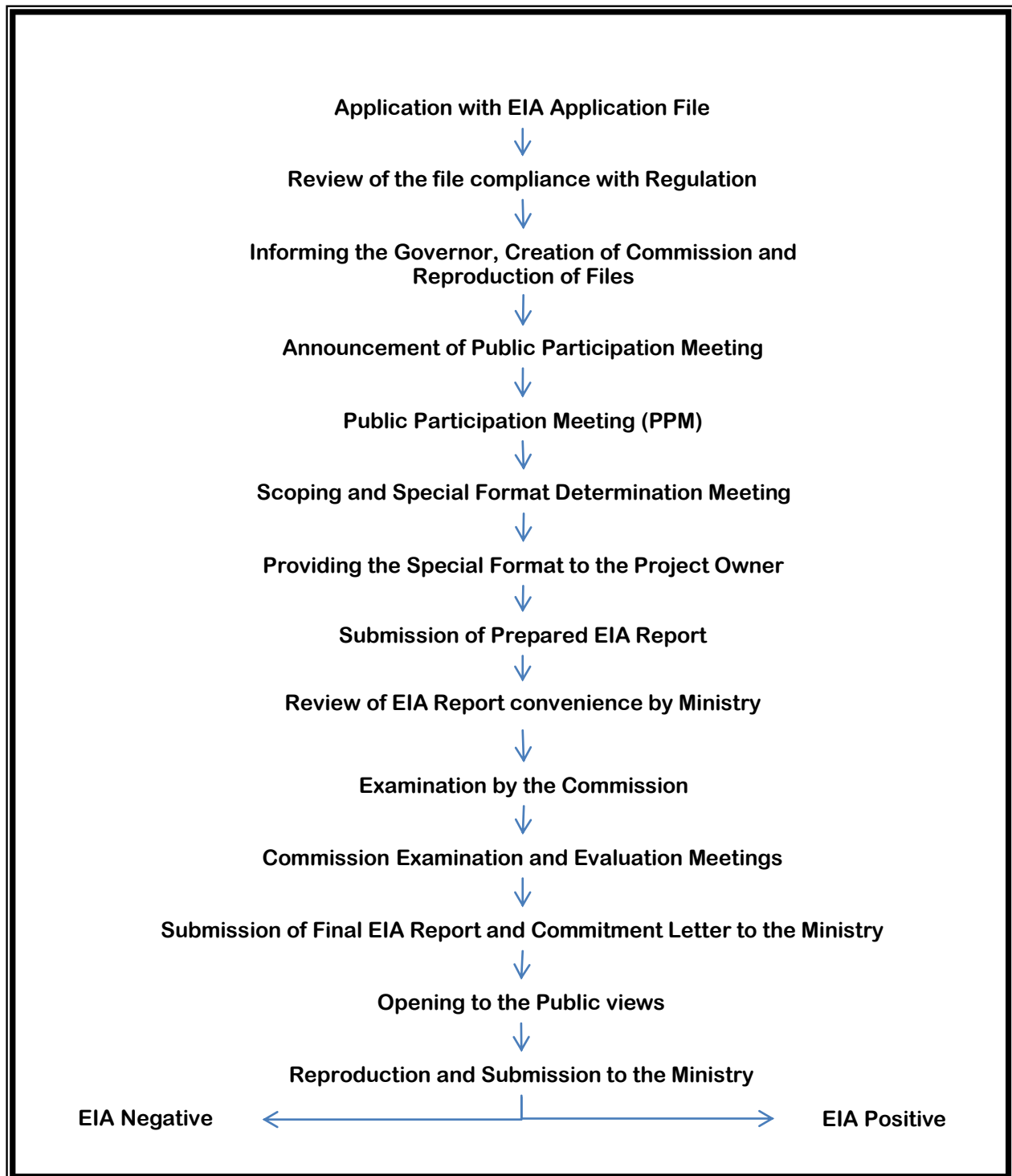


Figure 5. EIA Process Flow Chart

The figure above describes the EIA process in general. If needed, the Ministry of Environment and Urbanization may require more counseling sessions other than mentioned above. However, similar projects encountered with such process.

In the scope of the power plant project, the prepared EIA Application File was reviewed and found acceptable by the Ministry of Environment and Urbanization. The project was formally registered by the Ministry of Environment and Urbanization and dates for the Public Participation Meeting and Scoping and Special Format Determination Meeting were scheduled on 23 May 2013 and 27 May 2013, respectively. Public Participation Meeting announcements were published in local and national newspapers. In addition, the relevant official institutions, were invited to Public Participation Meeting via official correspondence. Final EIA report was submitted to the Ministry of Environment and Urbanization on 03.02.2014.

For the energy transmission line, two public participation meeting were held at Ankara/Çubuk and Kırıkkale/Yahşihan on 12 August 2013 and 13 August 2013, respectively. Final “Environmental Impact Assessment Report for Energy Transmission Line” has been submitted to Ministry of Environment and Urbanization on 20.11.2013.

Section III. 2. European Bank for Reconstruction and Development Performance Requirements

Projects to be considered for funding by the EBRD are expected to be in accordance with best international practices and EBRD's Performance Requirements and policies. EBRD's Environmental and Social Policy (2008), and EBRD's PRs, particularly PR10; Information Disclosure and Stakeholder Engagement (2008) and the Public Information Policy 2011 have been followed during the preparation of this SEP and will continue to be applied during updating of this SEP during the project lifecycle.

ACWA Power Kırıkkale Natural Gas Combined Cycle Power Plant project with 927.4 MWe installed power capacity is classified as a Category A Project under EBRD policy and regulations.

Stakeholder engagement is a continuous process aimed at building and maintaining a constructive working relationship between a project and its impacted and interest stakeholders. It should involve: (i) the public disclosure of appropriate information to enable stakeholders in meaningful consultation, and (ii) affected parties to be engaged in meaningful consultation, and (iii) and people to be offered to make comments or submit complaints via a formally stated procedure or policy. This process must begin at an early stage of the project planning process from beginning to end and it should continue throughout the project lifetime. Special consideration should be given to any vulnerable stakeholders who may not be able to participate in the public consultation process as readily and meaningfully as other stakeholders.

SECTION IV: SCOPE OF THE STAKEHOLDER ENGAGEMENT PLAN

Section IV.1. Prior Consultations Before ESIA Process

Before the initiation of the EIA Process of Power Plant, local authorities in the region (Kırıkkale Governorship, Kırıkkale Parliament Member, Yahşihan Municipality, Kılıçlar Municipality and Irmak Municipality) were visited and informed about the project by ACWA Power as a prior consultation with stakeholders.

Section IV. 2. Stakeholder Identification and Analysis

Stakeholder identification and analysis are some of the most critical first steps of project process. Within the context of the specific management issues to be addressed, stakeholder identification and analysis provide a basic understanding of the social and institutional context in which the planning process will take place.

1. Stakeholder Definition:

The key stakeholders shall include;

- ✓ Local people,
 - People live in settlements mentioned at Section II.2
 - Small farms close to access roads
 - Vulnerable people affected directly from the project
- ✓ A wide range of governments and their agencies
- ✓ Organizations, institutions and markets, which are not necessarily located close to the natural resource that is being managed.
- ✓ Workers (both employees and contractors)
- ✓ Local businesses and economic sectors that have a stake in the local resources

2. Stakeholder Identification and Engagement Activities:

Stakeholders are identified by dividing into 3 groups; Internal Stakeholder, External Stakeholder and Clients. Internal Stakeholders are people who are serving and working for the project as board members, staff and managers, and contractors. External Stakeholders are people who are both directly affected by the project and those who may only be peripheral to that intervention but are showing an interest in the project. External Stakeholders are impacted by the project as clients/constituents and community partners. Clients are people who will benefit from the project by using its products and service area. Client Group is a subset of external stakeholder group.

Key activities in this process of identifying impacted and interested stakeholders had included the followings:

- Identification of relevant local authorities by available Turkish survey maps.
- Identification of communities and properties (residential, commercial and industrial) in expected impact area.
 - Preliminary site validation through drive over to identify any recent additional properties not highlighted by local authorities or the Turkish maps.
 - Confirm locations of closest sensitive receptors such as schools, hospitals, mosques, and residential units, farm house, etc.
 - Document all above information gathered in the ESIA document.

Key activities in notifying stakeholders of the project were:

- Sending out letters with project information and invite interested parties to attend public meeting as detailed in table 3, and table 4,
- Consult with village leaders and community counselors,
- Publicize the project in national and local newspapers,
- Hold Public Participation Meeting and provide leaflets for attendees, and provide for discussion opportunities including questions and answers session,
- Provide opportunities for concerns to be raised verbally or in written form..

Key activities adapted in receiving ongoing comments and concerns or complaints:

- Providing a clear grievance mechanism including:
 - Contact details
 - Locations and means to obtain project information and associated ESIA documents,
- Response to comments and concerns or complaints within reasonable time frame.
- Maintain a register and records of inputs from all stakeholders and interested parties including a copy of the response.

Approximately 500 people will be employed during the construction activities of power plant. Workers are planning to be preferred primarily from local people living in surrounding of Project area. In case of staff from residential areas request accommodation in their dwellings and/or if construction conditions are appropriate, service vehicles may be used for transportation.

An infirmary will be build up in the temporary construction site for the workers and in this infirmary a doctor will be employed.

In small injuries and possible troubles, infirmary will be used firstly. In case of need a comprehensive treatment, Kırıkkale or Ankara Public Hospitals may be used. Ankara and Kırıkkale Public Hospitals are high capacity hospitals and any decrease in service quality is not anticipated due to utilization of construction workers of ACWA Power Kırıkkale NGCCPP Project.

In order to introduce the project and to effectively evaluate the environmental, social and techno-economic impacts of the project, people that might potentially be affected directly and the local people living in the region and legal authorities were firstly invited to the meeting. The stakeholders invited and the process undertaken is shown in tabular format in Tables 3 and Table 4.

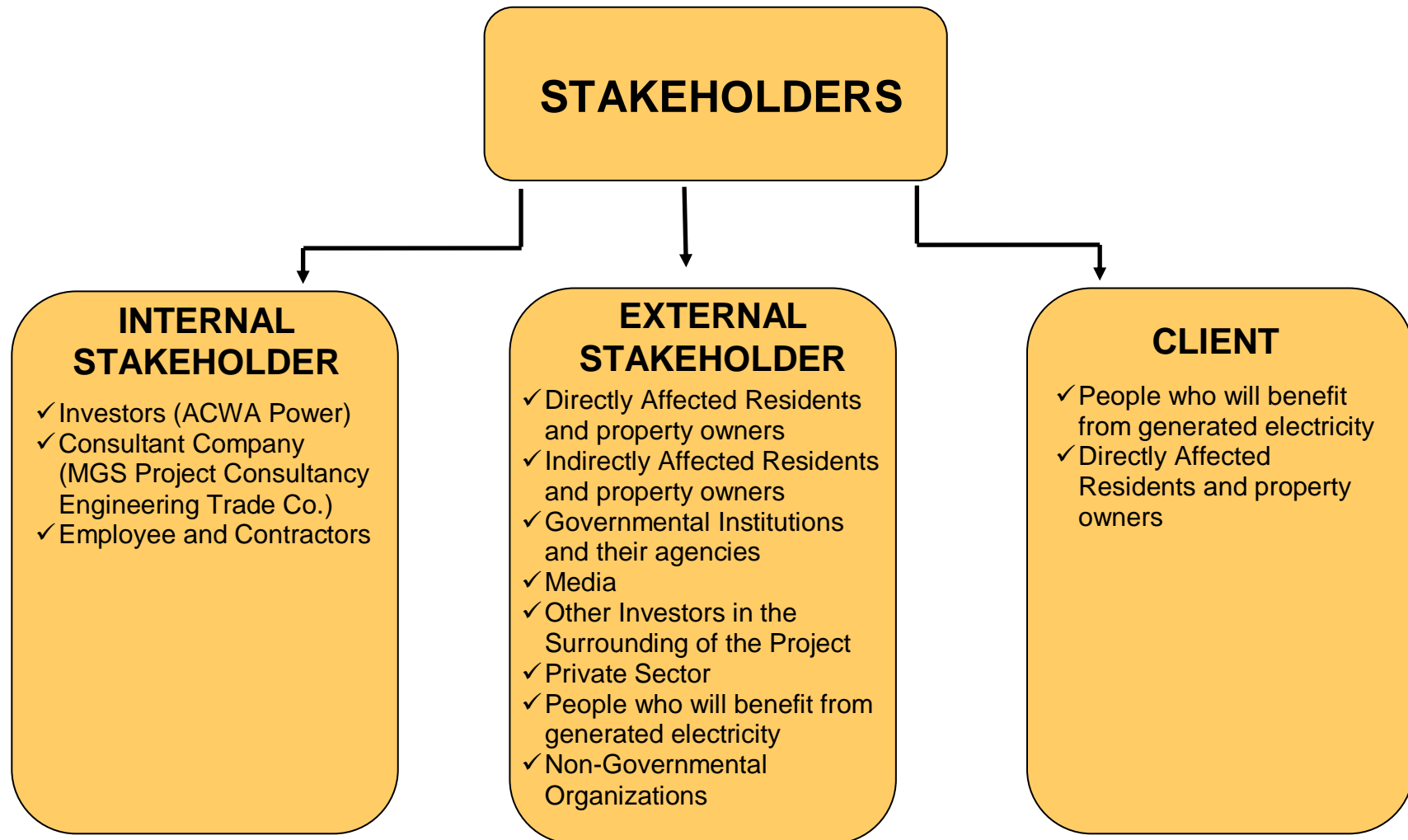


Figure 6. Stakeholder Table

Table 3. Stakeholder Description Table for Power Plant and Their Invitation Details

Category Code	Stakeholder		Invitation Method*	Invitation Date
1	Local People - Kılıçlar Municipality People - Yahşihan Municipality People - Hacıbalı Village People - Yenişehir District People - Local villagers and vulnerable people		Local and national Gazette Advertisement	11.05.2013
			Advertisement / Notice Board/Announcement is delivered by hand	May 2013
2	Yahşihan Municipality		Local and national scale Gazette Notice	11.05.2013
			Advertisement / Notice Board	May 2013
	Kılıçlar Municipality		Local and national scale Gazette Notice	11.05.2013
			Advertisement / Notice Board	May 2013
	Yenişehir District		Local and national scale Gazette Notice	11.05.2013
			Advertisement / Notice Board	May 2013
	Hacıbalı Village		Local and national scale Gazette Notice	11.05.2013
			Advertisement / Notice Board	May 2013
3	Kırıkkale Governorship	Provincial Directorate of Environment and Urbanization	Ministry of Environment and Urbanization Official Text	19.04.2013
		Provincial Directorate of Food, Agriculture and Livestock		
		Provincial Directorate of Public Health		
		Special Provincial Administration		
		Provincial Directorate of Disaster and Emergency		
4	Ministry of Energy and Natural Resources	General Directorate of Electricity Generation Company	Ministry of Environment and Urbanization Official Text	19.04.2013
		General Directorate of Mine Works		
		General Directorate of Mineral Research and Exploration		
	Ministry of Forestry and Water Works	General Directorate of State Hydraulic Works		
		General Directorate of Meteorology		
		General Directorate of Forestry		
		General Directorate of Nature Conservation and National Parks		
	Ministry of Culture and Tourism	General Directorate of Cultural Assets and Museums		
	Ministry of Health	General Directorate of Health Service		

Category Code	Stakeholder	Invitation Method*	Invitation Date
	Ministry of Environment and Urbanization	General Directorate of EIA Permit and Audit General Directorate of Environmental Management General Directorate of Spatial Planning	
5	NGOs CSOs	Local and national scale Gazette Notice In Relevant Municipalities Advertisement / Notice Board	11.05.2013 May 2013

Note 1: Category 1: Local Community in the Project Area and Residential Area

Category 2: Local Authorities

Category 3: Government at the Provincial Level

Category 4: National Public Bodies

Category 5: NGO(Non-Governmental Organizations) – CSO(Civil Society Network)

Note 2: Since the relevant person will be determined by management of institutions, invitations were sent directly to the institution instead of name of the relevant person.

*Invitation Documents are provided in the Appendix-7

Table 4. Stakeholder Description Table for Overhead Transmission Line

Category Code	Stakeholder	Invitation Method*	Invitation Date
1	Local People living at - Ankara Municipality - Kırıkkale Municipality	Local and national Gazette Advertisement	30.07.2013
2	Municipalities of Ankara Municipalities of Kırıkkale	Local and national scale Gazette Notice	30.07.2013
3	Ankara Governorship Kırıkkale Governorship	Ministry of Environment and Urbanization Official Text	2013
4	Governmental institutions and organizations	Ministry of Environment and Urbanization Official Text	2013
5	NGOs CSOs	Local and national scale Gazette Notice	30.07.2013

Note 1: Category 1: Local Community in the Project Area and Residential Area
Category 2: Local Authorities
Category 3: Government at the Provincial Level
Category 4: National Public Bodies
Category 5: NGO(Non-Governmental Organizations) – CSO(Civil Society Network)

Note 2: Since the relevant person will be determined by management of institutions, invitations were sent directly to the institution instead of name of the relevant person.

Section IV. 3. Stakeholder Engagement and Informing Activities

On 23.05.2013 in Kılıçlar Municipality Coffee House, Public Participation Meeting for power plant project was held pursuant to the EIA Process. Approximately 30 people attended meeting. Pictures from meeting are in the attachment. (Appendix-4)

The meeting was chaired by the Kırıkkale Provincial Director of Environment and Urbanization. In the meeting, it was ensured that the public was informed about the project and their opinions, questions, and recommendations were noted. These meeting notes were evaluated during the Scope and Special Format Determination Meeting. The chairman of the meeting may request evaluation section for public opinions, questions and recommendations in EIA report.

As being a common practice of the Ministry of Environment and Urbanization, participant list was created in which attenders' name-surname, institution and title, contact information are recorded during the meeting. Therefore participants were recorded with this list. This process will enable further information and activities to be communicated with interested parties in the future, thereby, providing a meaningful consultation process.

In the meeting, MGS Project explained details about;

- ✓ Project location,
- ✓ Scope of activities,
- ✓ Social and environmental impacts and mitigation measures
- ✓ Why Turkey needs this project.
- ✓ Legislation framework to which power plant will be in compliance
- ✓ Possible environmental effects during construction and operation phases
- ✓ Each type of wastes originated during construction and operation phases and their disposal methods
- ✓ Contact information for participants' opinions and proposals to be submitted.

Consultation on ESIA Documentation

Environmental and Social Impact Assessment Report (ESIA), Stakeholder Engagement Plan (SEP), Non-technical Summary (NTS) and Environmental and Social Management and Monitoring Plan (ESMMP), are prepared for public disclosure. List of Addresses in Which the Documents are Available under Section IV.4. Grievance Mechanism. Although it is not anticipated to have additional public or consultation meetings, the Ministry or ACWA can request such meetings if needed.

A Grievance/Suggestion Mechanism is created not only for public disclosure of SEP, NTS, ESIA and ESMMP documents but also for receiving complaints from stakeholders during construction and operation phases. Detailed information about how, where and when they shall people can make complaints in each stages is provided in Section IV.

In the scope of grievance mechanism a grievance form is created in order to receive grievances from stakeholders and these forms will be available in temporary construction site, Kılıçlar Municipality and MGS Project office and web site.

Complaints of stakeholders about the prepared documents and activities during construction and operation phases will be recorded within 5 working days. Whole complaints will be responded verbally and/or orally (based on their request) within 30 days.

For the energy transmission line, two public participation meeting were held at Ankara/Çubuk and Kırıkkale/Yahşıhan on 12 August 2013 and 13 August 2013, respectively. There were no intense interests to meetings from local people. During the meeting, information about project and possible effects was introduced to participants. Pictures from meeting are in the attachment. (Appendix-4)

In case of any change in project scope (project area, capacity, type etc.) a new meeting will be organized for sharing with stakeholders. This meeting will be announced via National and Local Newspapers, Municipality Announcements and Leaflets (Appendix-6). Any other meeting is not planned other than this case.

Stakeholders shall follow national and local newspapers in order to be informed about such progressions.

The public could submit their questions, comments and proposals via telephone, e-mail, fax etc. to the ACWA Power (contact information is given below). These will be recorded, and evaluated as part of the ESIA process. With the start of construction, informative brochures will be used at office of village headman that is explaining communication methods for the project.

- ACWA POWER ELECTRICITY OPERATION AND MANAGEMENT CO.
ADDRESS : Teşvikiye Cad. Teşvikiye Palas No:23-2
Nişantaşı 34365 İstanbul/TURKİYE
TEL / FAX : +90 212 259 33 96 / +90 212 259 33 97
- MGS PROJECT CONSULTANCY ENGINEERING TRADE CO.
ADDRESS : Şehit Cevdet Özdemir Mah. Öveçler 4. Cad, 1351. (Eski 203.) Sk.
No:1/7, 06460 Çankaya Ankara / TURKEY
TEL / FAX : +90 312 479 84 00 / +90 312 479 84 99

After public participation meeting, Scoping and Special Format Determination Meeting for ACWA NGCCPP was held on 27 May 2013 with commission members in the Ministry of Environment and Urbanization.

According to Turkish Legislation, any other consultation meeting is not required. Stakeholders may always reach to the documents in which project details are explained from mentioned addresses. Moreover, they can always complain and give their views/opinions via Kırıkkale Provincial Directorate of Environmental and Urbanization or Ministry of Environmental and Urbanization during construction and operation phases.

Project Implementation

According to Turkish Legislation, during the construction period, monitoring activities shall be conducted between periods determined by Ministry of Environment and Urbanization for the EIA Report prepared activities. ACWA Power Kırıkkale NGCCPP Project audits are anticipated to be implemented every six months. In the scope of audits, audit reports will be prepared and submitted to the Ministry of Environment and Urbanization. These reports also will be available in ACWA Power center building and temporary construction site for stakeholders review and conduct their views.

In the following table, stakeholder participation and information activities program is provided.

Table 5. Stakeholder Participation and Disclosure Activities Program for Power Plant Project

Activity	Stakeholder Group ¹					Explanation
	1	2	3	4	5	
Stakeholder Engagement and Disclosure Activities Before Environmental and Social Impact Assessment		X				Carried out February 2013 before EIA Process.
Invitations by official letter			X	X	X	Ministry of Environment and Forest invited via official letter.
Newspaper Advertisements (In Local Newspaper and National Newspaper)	X	X	X	X	X	Newspaper advertisement published in local and national scale on 11.05.2013
Announcements and Notices	X	X			X	Official announcements done via related institutions.
Public Participation Meeting	X	X	X	X	X	Carried out on 23.05.2013
Scoping and Special Format Determination			X	X		Carried out on 27.05.2013
EIA Report	X	X	X	X	X	To be prepared
Public consultation period on ESIA materials	X	X	X	X	X	60 days period after submission of ESIA
Stakeholder Feedbacks	X	X	X	X	X	Stakeholders' questions, comments and suggestions should be answered and made the necessary disclosures.
Final EIA Reports	X	X	X	X	X	Final EIA Report will be prepared taking into account all the considerations will be announced and stakeholders.

Note 1: Category 1: Local Community in the Project Area and Residential Area
Category 2: Local Authorities
Category 3: Government at the Provincial Level
Category 4: National Public Bodies
Category 5: NGO - CSO

A Grievance/Suggestion Mechanism is created not only for public disclosure of SEP, NTS, ESIA and ESMMP documents but also for receiving complaints from stakeholders during construction and operation phases.

In the scope of grievance mechanism a grievance form is created in order to receive grievances from stakeholders and these forms will be available in temporary construction site, Kılıçlar Municipality, Project Owner website and MGS office and website.

Complaints and suggestions of stakeholders about the prepared documents and activities during construction and operation phases will be recorded within 5 working days. Whole complaints and suggestions will be responded verbally and/or orally (based on their request) within 30 days.

Section IV. 4. Grievance Mechanism

As part of good business practice, we have developed a process to deal with stakeholders concerns and complaints and to respond with more information and mitigation measures, as appropriate.

In the scope of the project, a grievance mechanism will be constituted with below properties;

➤ Making documents accessible

In order to raise public interest, whole documents SEP, NTS, ESIA, ESMMP will be available through:

- Project owner and consultant companies websites
- Construction site for construction workers
- Hard copies of ESIA and NTS available at Ankara and Kırıkkale Provincial Directorate of Environment and Urbanization
- Operation workers power plant and construction camps of OHTL

➤ Response time and transparency issue

We will record and acknowledge your complaint or grievance within 5 working days. All recorded complaints will be responded within 30 days. Management will receive information on grievances and monitor that these response times are met.

➤ Keeping good records and report back

For effective grievance management, we will keep a written record of all complaints. The record will include the date of the complaint, any follow-up actions taken, the final result, and how and when this decision was communicated to the complainant.

Any grievance and questions related with ACWA Power power plant will be appointed taken from the Consultant Company whose contact information and relevant staff member are mentioned in below;

Company	: ACWA Power Electricity Operation and Management Co
Relevant Staff	: Soner Yıldız
Address	: Teşvikiye Cad. Teşvikiye Palas No:23-2 Nişantaşı 34365 İstanbul/TURKİYE
Telephone	: +90 212 259 33 96
Fax	: +90 212 259 33 97
e-mail	: syildiz@acwapower.com

Once ACWA appoint its HSE manager, the HSE will assume responsibility of monitoring and reporting on received grievances. HSE manager will have to report grievances to ACWA management.

People can obtain whole documents such as ESIA Report, SEP and NTS from above address and contact staff throughout the project life cycle. ESIA Report will be also available in the Kırıkkale Provincial Directorate of Environment and Urbanization.

In order to receive grievances from stakeholders, grievance forms will be available in temporary construction site, Kılıçlar Municipality, ACWA Power center building and web site. The grievance form shall only be used to address grievance(s) only. Comments, suggestions, inquiries or any other related matter shall be submitted separately to the above mention points of contact through emails, letters, faxes, or phone calls and not on the grievance form.

Comments, suggestions or/and inquiries of similar nature will be grouped together and responded to accordingly.

The below grievance form shall be used for ACWA Power Kırıkkale NGCCPP project. The table presents the list of addresses where ESIA Reports, SEP, NTS and Annual Reports on Environmental and Social Performance are available.

GRIEVANCE FORM

(To be used for grievance(s) only. Shall not be used to raise comments, suggestions, or/and inquires or any other matters)

Reference No:	
Full Name	My first name _____ My last name _____ <input type="checkbox"/> I wish to raise my grievance anonymously <i>Note: you can remain anonymous if you prefer, but we will not be able to contact you with a response to your concern.</i>
Contact Information Please mark how you wish to be contacted (mail, telephone, e-mail).	<input type="checkbox"/> By Post: Please provide mailing address: _____ _____ _____ <input type="checkbox"/> By Telephone: _____ <input type="checkbox"/> By E-mail _____
Preferred Language for communication	<input type="checkbox"/> Turkish <input type="checkbox"/> English
Description of Incident or Grievance: What happened? Where did it happen? Who did it happen to? What is the result of the problem?	
Date of Incident/Grievance	<input type="checkbox"/> One time incident/grievance (date _____) <input type="checkbox"/> Happened more than once (how many times? _____) <input type="checkbox"/> On-going (currently experiencing problem)
What would you like to see happen to resolve the problem?	

Signature: _____ Date: _____

Please return the completed form to ACWA Power Electricity Operation and Management Industry and Trade Co Relevant Staff: Soner Yıldız Address: Teşvikiye Cad. Teşvikiye Palas No:23-2 Nişantaşı 34365 İstanbul/TURKIYE Telephone: +90 212 259 33 96 Fax: +90 212 259 33 97 e-mail: syildiz@acwapower.com

Table 6. List of Addresses in Which the Documents are Available

Documents	Pre-Construction Period		During Construction Period		During Operation Period	
	Establishment	Address	Establishment	Address	Establishment	Address
ESIA Report	Kırıkkale Provincial Directorate of Environmental and Urbanization	Kaletepe Mahallesi Samsun Bulvarı Ulutaş Apartmanı No:151 Kırıkkale	Temporary Construction Camp	Will be determined.	ACWA Power Kırıkkale NGCCPP	Kılıçlar Belediyesi Yahşihan/Kırıkkale
	Ministry of Environment and Urbanization	Söğütözü Mahallesi 2179. Sokak No:5 Balgat/ ANKARA	ACWA Power, Central Building and Website	Teşvikiye Cad. Teşvikiye Palas No:23-2 Nişantaşı 34365 İstanbul		
	ACWA Power, Central Building and Website	Teşvikiye Cad. Teşvikiye Palas No:23-2 Nişantaşı 34365 İstanbul			ACWA Power, Central Building and Website	Teşvikiye Cad. Teşvikiye Palas No:23-2 Nişantaşı 34365 İstanbul
	MGS Project	Şehit Cevdet Özdemir Mah. Öveçler 4. Cad, 1351. (Eski 203.) Sk. No:1/7, 06460 Çankaya Ankara /TÜRKİYE	MGS Project	Şehit Cevdet Özdemir Mah. Öveçler 4. Cad, 1351. (Eski 203.) Sk. No:1/7, 06460 Çankaya Ankara /TÜRKİYE		
SEP	ACWA Power, Central Building and Website	Teşvikiye Cad. Teşvikiye Palas No:23-2 Nişantaşı 34365 İstanbul	ACWA Power, Central Building and Website	Teşvikiye Cad. Teşvikiye Palas No:23-2 Nişantaşı 34365 İstanbul	ACWA Power Kırıkkale NGCCPP	Kılıçlar Belediyesi Yahşihan/Kırıkkale
	MGS Project	Şehit Cevdet Özdemir Mah. Öveçler 4. Cad, 1351. (Eski 203.) Sk. No:1/7, 06460 Çankaya Ankara /TÜRKİYE	Temporary Construction Camp	Will be determined.		
			MGS Project	Şehit Cevdet Özdemir Mah. Öveçler 4. Cad, 1351. (Eski 203.) Sk. No:1/7, 06460 Çankaya Ankara /TÜRKİYE	ACWA Power, Central Building and Website	Teşvikiye Cad. Teşvikiye Palas No:23-2 Nişantaşı 34365 İstanbul

ACWA POWER KIRIKKALE NATURAL GAS COMBINED CYCLE POWER PLANT PROJECT
STAKEHOLDER ENGAGEMENT PLAN

Documents	Pre-Construction Period		During Construction Period		During Operation Period	
	Establishment	Address	Establishment	Address	Establishment	Address
NTS	ACWA Power, Central Building and Website	Teşvikiye Cad. Teşvikiye Palas No:23-2 Nişantaşı 34365 İstanbul	Temporary Construction Camp	Will be determined.	ACWA Power Kırıkkale NGCCPP	Kılıçlar Belediyesi Yahşihan/Kırıkkale
	MGS Project	Şehit Cevdet Özdemir Mah. Öveçler 4. Cad, 1351. (Eski 203.) Sk. No:1/7, 06460 Çankaya Ankara /TÜRKİYE				
			MGS Project	Şehit Cevdet Özdemir Mah. Öveçler 4. Cad, 1351. (Eski 203.) Sk. No:1/7, 06460 Çankaya Ankara /TÜRKİYE	ACWA Power, Central Building and Website	Teşvikiye Cad. Teşvikiye Palas No:23-2 Nişantaşı 34365 İstanbul
Monitoring Reports In periods determined by Ministry of Environment and Urbanization (3 months, 6 months etc.)	Not Applicable During Project Period		Temporary Construction Camp	Will be determined.	Not Applicable During Operation Period	
			ACWA Power, Central Building and Website	Teşvikiye Cad. Teşvikiye Palas No:23-2 Nişantaşı 34365 İstanbul		
Annual Report on Environmental and Social Performance	Not Applicable During Project Period		Not Applicable During Construction Period		ACWA Power Kırıkkale NGCCPP	Kılıçlar Belediyesi Yahşihan/Kırıkkale
					ACWA Power, Central Building and Website	Teşvikiye Cad. Teşvikiye Palas No:23-2 Nişantaşı 34365 İstanbul