

ANNEX 05: STUDY OF THE BENTHIC COMMUNITIES

Pioneer in integrated consulting services





March 2016



PRINOS OFFSHORE DEVELOPMENT PROJECT

Study of the Benthic Communities

THIS PAGE IS LEFT INTENTIONALLY BLANK

PRINOS OFFSHORE DEVELOPMENT PROJECT STUDY OF THE BENTHIC COMMUNITIES	
Environmental Consultant:	 LDK Engineering Consultants SA
	 University of Athens
Date:	04/03/2016
Revision:	01
Description:	1 st Draft interim submittal

	Name – Company	Responsibility	Signature	Date
Prepared by:	Prof. Artemis Nikolaidou, University of Athens	Marine Biologist		
	S.C. Garcia Gomez	Benthic Ecologist		
Field work:	Elizabeth Arevalo Corillo	Marine Biologist		
	Aglaia Legaki	Marine Biologist		
	Eleni Avramidi, LDK	Senior ESIA/GIS consultant		
	Eleni Giamakidou, LDK	Junior ESIA, ecology consultant		
Laboratory analyses:	Spyros Aravantinos	Marine Biologist		
	Elizabeth Arevalo Corillo	Marine Biologist		

	Name – Company	Responsibility	Signature	Date
Ecological quantity analysis:	Kalliopi Sigala	Marine Biologist		
Checked by:	Prof. Artemis Nikolaidou, University of Athens	Marine Biologist		
	C. Nicolopoulos, LDK	Head of LDK Environment, principal, project director		
Approved by:	C. Nicolopoulos, LDK	Head of LDK Environment, principal, project director		
	Vassilis Tsetoglou – Energean	HSE Director		
	Dr. Steve Moore – Energean	General Technical Director		

THIS PAGE IS LEFT INTENTIONALLY BLANK

TABLE OF CONTENTS

<u>1</u>	<u>METHODS</u>	<u>1</u>
1.1.	FIELD METHODS	1
1.2.	LABORATORY METHODS	1
1.3.	MATHEMATICAL TREATMENT OF DATA	1
<u>2</u>	<u>RESULTS</u>	<u>3</u>
2.1.	ECOLOGICAL INDICATORS	3
2.2.	COMMUNITY STRUCTURE	6
2.3.	SIMILARITY BETWEEN STATIONS	7
2.4.	ENVIRONMENTAL STATUS	8
<u>3</u>	<u>CONCLUSIONS</u>	<u>11</u>
<u>4</u>	<u>REFERENCES</u>	<u>12</u>
<u>5</u>	<u>APPENDICES</u>	<u>13</u>
5.1.	APPENDIX I	13
5.2.	APPENDIX II	18

1 METHODS

1.1. FIELD METHODS

The samples were collected by professional divers, using Corers 10 cm in diameter and 35cm in height (Fig. 1). The corers were inserted into the sediment down to 20 cm, closed and brought to the surface. Five replicate samples were collected at each station. The contents of each corer were sieved separately, through a sieve with 1mm openings. The retained material was preserved in 4% formalin in seawater, stained with Rose Bengal and transferred to plastic containers.



Plate 1: Corer

1.2. LABORATORY METHODS

In the laboratory, the samples were washed to remove formalin; the organisms were extracted from the sediment remains and were preserved in alcohol 75 % until identification under optical microscope.

1.3. MATHEMATICAL TREATMENT OF DATA

For the assessment of the Environmental Status, use was made of the quality elements related to the benthos and proposed by the Marine Strategy Framework Directive (MSFD) (EC, 2013)

namely “species richness” S and “species diversity” H’. For the quality element “ratio of opportunistic to tolerant species” the index BENTIX (Simboura & Zenetos, 2002) was used as proposed by Simboura et al (2013).

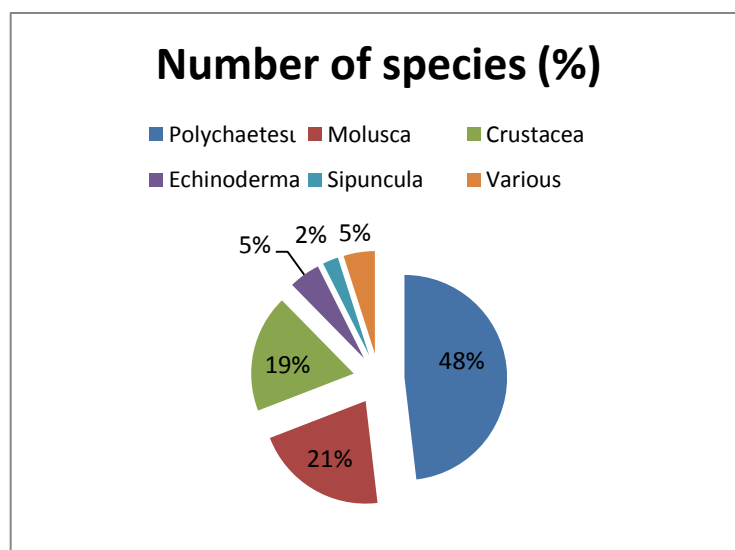
The statistical treatment of the data was carried out using the package PRIMER.

2 RESULTS

2.1. ECOLOGICAL INDICATORS

A total of 75 samples were analysed and 1300 individuals, belonging to 163 species or higher taxa, were identified. The species found and the total numbers of individuals per species in the five replicates of each station are shown in APPENDIX I while the numbers per sample are shown in APPENDIX II.

The most abundant group is the polychaetes, which account for 48 % of the species and 59 % of the individuals, followed by the mollusks with 21% of the species and 22 % of the individuals (Fig. 1). The crustaceans are equally important with the mollusks as far as the number of species is concerned (19%), but less important considering the number of individuals (6%)



A

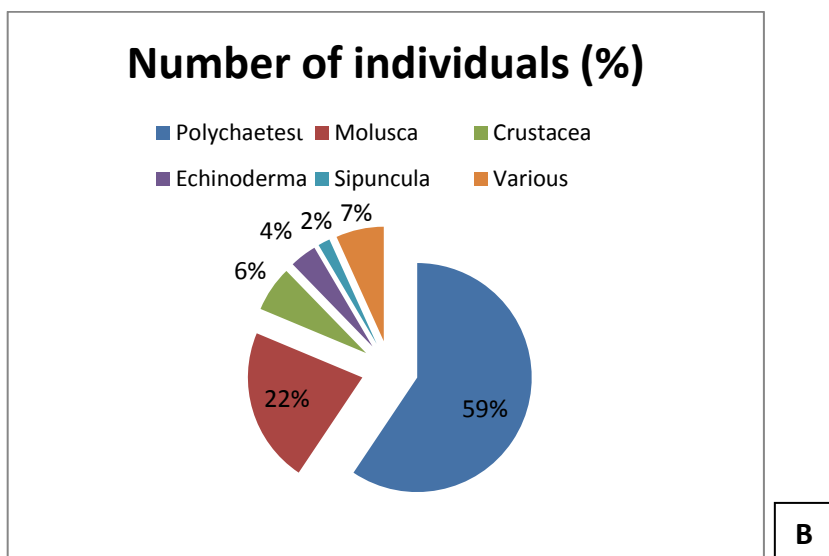
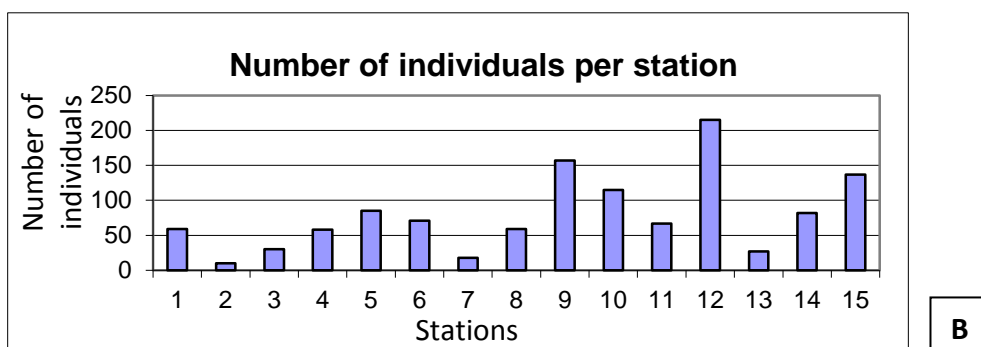
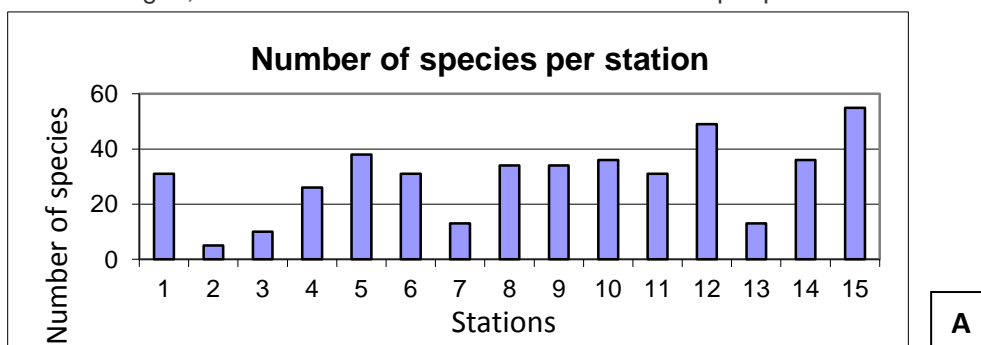


Figure 1: Community composition according to the number of species (A) and the number of individuals (B)

The number of species, the number of individuals and the diversity (H') at each station are shown in Fig. 2, while the mean values of the above indices per platform are found in Fig. 3.



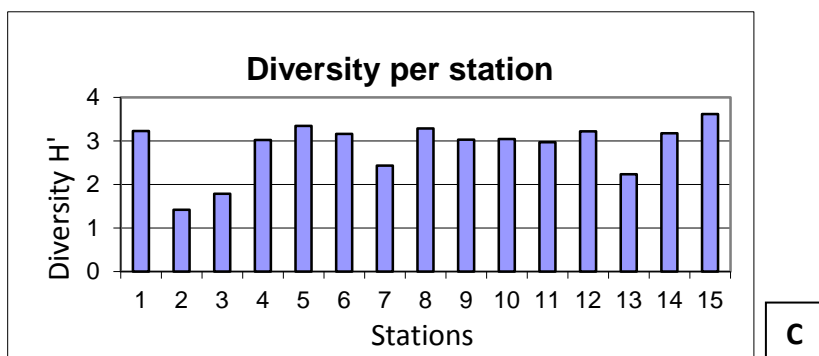
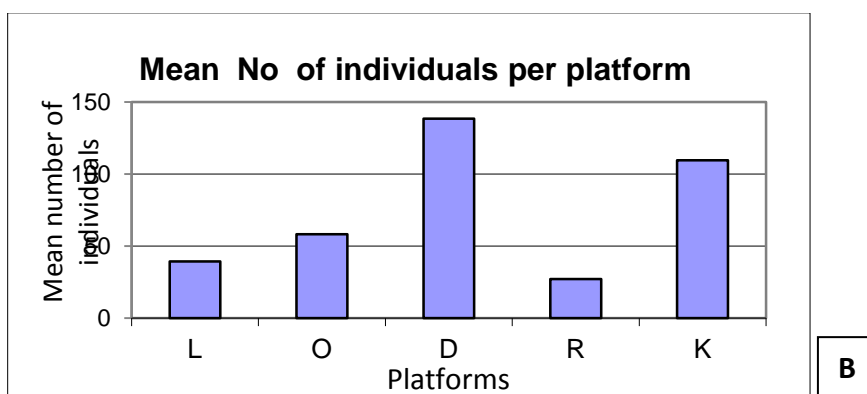
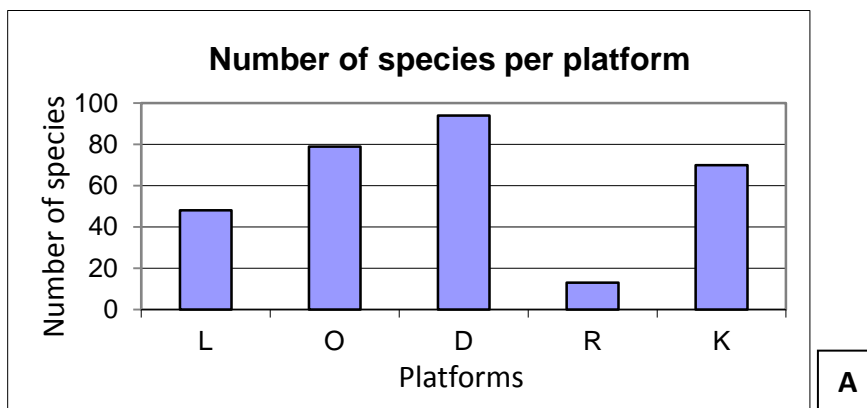


Figure 2: Community composition according to the number of species (A) and the number of individuals (B)



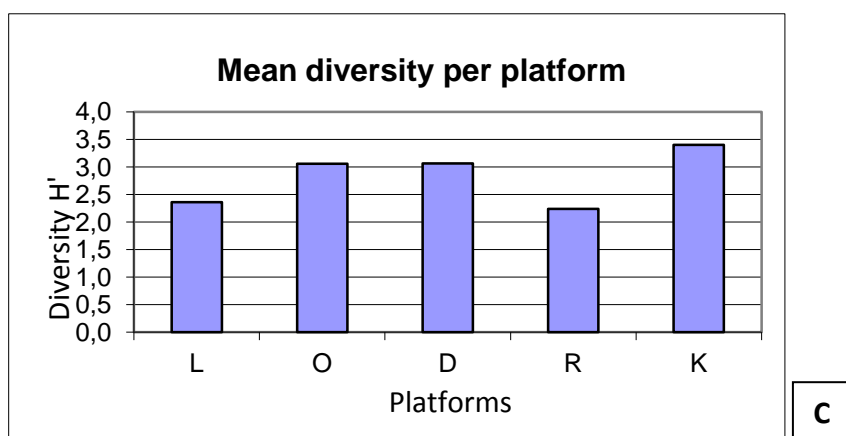


Figure 3: Total number of species (A) mean number of individuals (B) and diversity (C) per platform

The highest number of species ($S=55$) and the highest diversity ($H'=3.62$) were found in station 15 of Platform K, followed by station 12 of platform D ($S=49$ and $H'=3.22$). However, the highest number of individuals (215) was found in station 12. This is probably due to the larger amount of fine particles in the sediment in this station. Looking at the Platforms on the whole, Platform D showed the larger number of species among the platforms, the Reference station included, followed by Platform K. It should be pointed out, however, that half the number of stations was sampled around this platform. Platform K showed the highest average diversity, however, probably due to the more even distribution of the individuals among the species ($JD=0.85$, $JK=0.9$). It is interesting to note the high numbers of individuals found on average round platforms D ($N=139$) and K ($N=110$), which could be attributed to the fishing prohibition imposed in the area leaving the bottom undisturbed.

2.2. COMMUNITY STRUCTURE

Concerning community structure, the species found in the present study are either characteristic or abundant in benthic communities of the Circalittoral Zone of the Mediterranean, as described by the classic work of Peres and Picard (Peres 1967). Thus, there were species belonging to the Coastal Terrigenous Mud (VTC), such as the polychaetes *Sternaspis scutata* (Eik.2), *Laonice cirrata* and *Goniada* sp., the bivalve *Abra alba* and the crab *Goneplax rhomboides*. There were also species belonging to the Coastal Detritic (DC) community, such as the polychaetes *Glycera rouxi* and *Terebellides stroemi* the bivalves *Corbula gibba* (Eik.3A) and *Tellina serrata*, the crab *Ebalia* and the echinoderms *Amphipholis squamata* and *Amphiura chiajei*. The biogenic detritus originate from inorganic parts of benthic organisms and they are often covered by layers of calcareous algae. Such detritus were quite abundant in the study area. It is worth noticing that a lot of the common or abundant species

found in this study have also been mentioned by previous studies in the Bay of Kavala at similar depths by Zarkanellas (1977) and Papazaharias et al (1998).

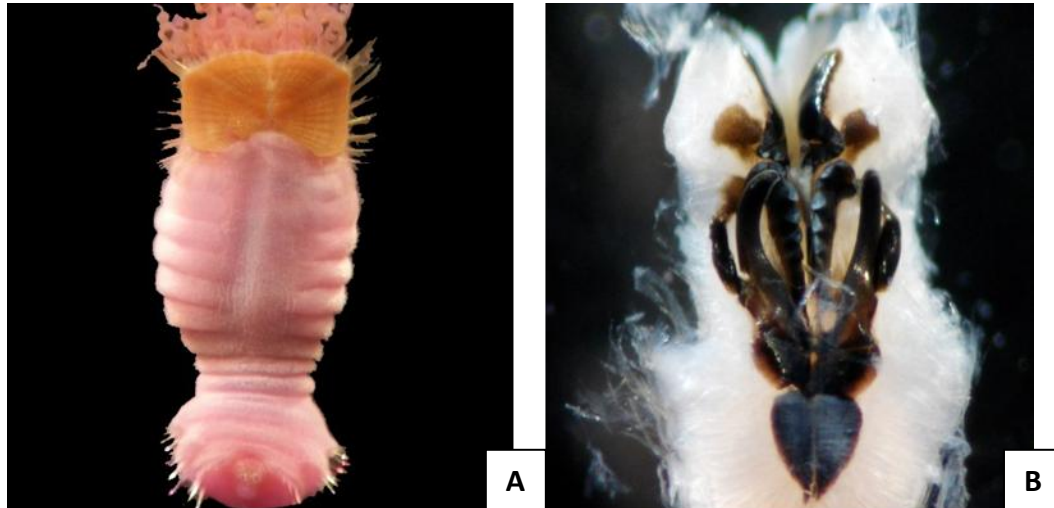


Plate 2: A) The polychaete *Sternaspis scutata*, B) Maxillary apparatus of the polychaete *Lubrineris latreilli*.

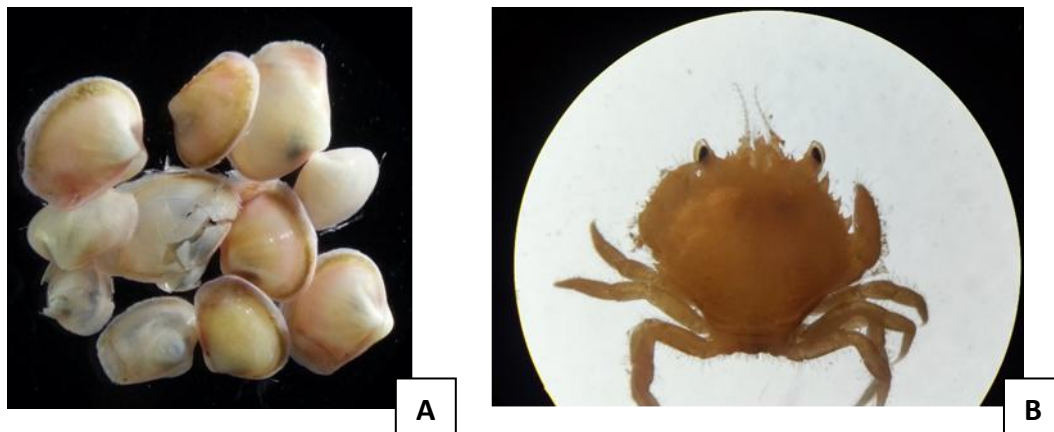


Plate 3: A) The bivalve *Corbula gibba*, B) The crab *Atelecyclus* sp.

2.3. SIMILARITY BETWEEN STATIONS

The similarity between stations can be seen in the MDS of Fig.4, where the stations with more similar fauna are placed nearer in the diagram. The deeper stations 2, 3, and 4 of platform L are separated from the rest, having generally poor fauna. Placed in the same group is station 7 of platform O although it has a smaller depth. This is due to its smaller number of species (13) and individuals (18) compared to the rest of the stations of the platform, the numbers of which

vary from 31-38 for the species and 59-85 for the individuals. The paucity of the fauna is probably due to the temporal cover of the bottom by layers of mud coming from the land at periods of high rainfall. Similar phenomena have been observed in the Western Mediterranean off Marseille (Solis-Weis, 1982).

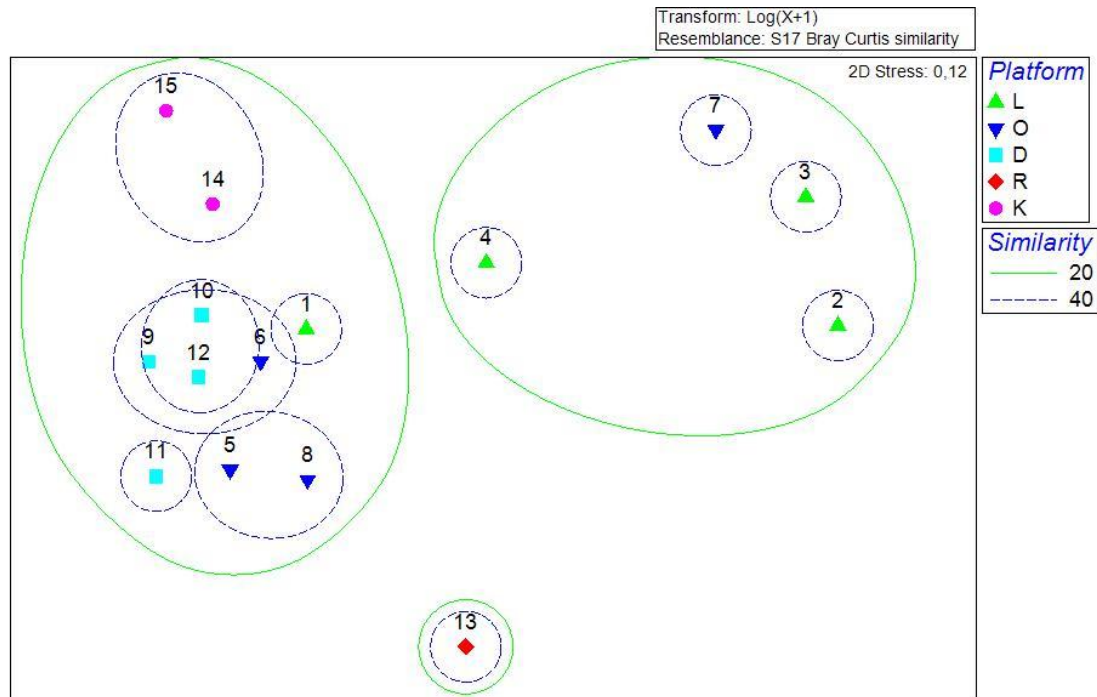


Figure 4: MDS diagram of the sampling stations based on their fauna similarities. Stations with more similar fauna are placed nearer.

2.4. ENVIRONMENTAL STATUS

The values for the quality elements, proposed by MSFD, of Species Richness, Species Diversity and BENTIX are shown in Table 1. Based on species diversity values for open sea heterogeneous sediments and according to Simboura et al (2013), who set the boundary for Good Environmental Status (GEnS) at 4.5, none of the stations achieves GEnS. Conversely for species richness only stations 3,4,7 and 13 do not have GEnS. The above indices are influenced by, among others, the sample size and the sampling methodology and it is recommended that they are used with caution in ecological classification (Salas et al. 2006). Therefore BENTIX is also calculated as being robust and independent of habitat type and sample size (Simboura & Zenetos 2002). Based on this index, Table 1 also shows the classification of the environmental quality according to the Water Framework Directive which is more detailed. As seen in this Table and Figure 4, the ecological quality of the stations ranges from “Good” to “Moderate” with the exception of station 10 of platform D, where the ecological

condition is “High” and station 3 of platform L where it is characterized as “Poor”. The last is attributed to the relatively high abundance of the polychaete *Levinsenia cf demiri* which is a non-sensitive species having no specific ecological requirements. The “Moderate” ecological quality of station 12 of platform D is marginal (value of BENTIX:3,46 with the limit for “Good” ecological status equal to 3,5) and is due to the high abundance of the bivalve *Corbula gibba* which, however, is among the common species of this community (see above).

It should be stated that the MSFD thresholds taken into consideration here, are set by Simboura et al. (2013) and as the authors say, “they are tentative and more data are required to arrive at safe settings”.

Stations	Platforms	Diversity H'	Classif. H'	Richness S	Classif. S	Bentix	Classif. MSFD	Class. WFD
1	L	3,22		31	GEnS	3,53	GEnS	GOOD
2	L	1,42		5		2,8		MODERATE
3	L	1,78		10		2,2		POOR
4	L	3,02		27	GEnS	3,22		MODERATE
5	O	3,35		38	GEnS	4,24	GEnS	GOOD
6	O	3,16		31	GEnS	3,63	GEnS	GOOD
7	O	2,43		13		3		MODERATE
8	O	3,29		34	GEnS	3,56	GEnS	GOOD
9	D	3,03		34	GEnS	4,09	GEnS	GOOD
10	D	3,04		36	GEnS	4,87	GEnS	HIGH
11	D	2,97		31	GEnS	4,45	GEnS	GOOD
12	D	3,22		49	GEnS	3,46		MODERATE
13	R	2,24		13		2,89		MODERATE
14	K	3,18		36	GEnS	3,1		MODERATE
15	K	3,62		55	GEnS	3,34		MODERATE

Table 1: Values for the quality elements of Species Diversity, Species Richness and BENTIX and characterization of environmental status. Classification according to WFD is also given



Figure 5: Graphical representation of the ecological quality of the sampling

The results of the present study refer to the special points of interest, where sampling has taken place. For a complete mapping of the benthic communities in the general area of the outer Kavala Bay a network of a larger number of stations would be required.

3 CONCLUSIONS

The benthic communities in the study area are typical of the Mediterranean in the given depths.

The installations of the oil extraction have not affected negatively the benthic ecosystem, since the benthic communities are similar to those described for the area in the past.

Conversely, there is an increased number of species and individuals in the area of the installations which is due to the exclusion of the area of other activities and the resulting protection of the sea bottom.

4 REFERENCES

EC, 2010. Commission Decision of 1 September 2010 on criteria and methodological standards on good environmental status of marine waters (notified under document C(2010) 5956)(2010/477/EU). Official Journal of the European Union, L232: 14-24

Papazaharias A., A. Koukouras, T. Kevrekidis and E. Voultsiadou 1998. Internat. Rev. Hydrobiol. 83: 461-477.

Peres, J.M. 1967. The Mediterranean Benthos. Oceanography and Marine Biology Annual Review. 5: 449-533

Salas, F., Patrício, J., Marcos, C., Pardal, M.A., Pérez-Ruzafa, A. & Marques, J.C., 2006. Are taxonomic distinctness measures compliant to other ecological indicators in assessing ecological status? Marine Pollution Bulletin, 52:162-174.

SIMBOURA, N, A. ZENETOS 2002. Benthic indicators to use in Ecological Quality classification of Mediterranean soft bottom marine ecosystems, including a new Biotic Index. Mediterranean Marine Science 3: 77-111

Simboura, N., A. Zenetos, M.A. Pancucci-Papadopoulou, S. Reizopoulou and N. Streftaris. 2013 Indicators for the Sea-floor Integrity of the Hellenic Seas under the European Marine Strategy Framework Directive: establishing the thresholds and standards for Good Environmental Status Mediterranean Marine Science 13:140-152

SOLÍS-WEISS, V., 1982. "Estudio de las poblaciones macrobénticas en áreas contaminadas de la bahía de Marsella, Francia". An. Inst. Cienc. del Mar y Limnol.

Zarkanellas, A.J, 1977. Benthic studies in Kavala Gulf, Greece. Thalassographica 3: 266-278.

5 APPENDICES

5.1. APPENDIX I

SPECIES	1	2	3	4	5	6	7	8	9	10	11	12	13	14	15
Polychaetes															
Ampharete cf lindstroemi	2	0	0	0	0	0	0	0	0	0	0	0	0	0	0
Amphicteis gunneri	0	0	0	0	1	0	0	0	0	0	0	0	0	0	0
Laetmonice (Hermione) hystrix	0	0	0	0	0	0	0	1	0	0	0	0	0	0	0
Notomastus latericeus	0	0	0	1	0	2	0	1	1	0	1	1	0	1	4
Aphelochaeta marioni	0	0	0	2	0	2	0	0	0	0	0	0	0	0	1
Chaetozone cf gibber	0	0	0	0	0	0	0	0	0	2	1	0	0	0	1
Chaetozone sp.	0	0	0	0	0	0	0	0	0	0	1	0	0	0	0
Cirratulidae*	0	0	0	0	0	0	0	0	0	4	0	0	0	0	0
Monticellina dorsobranchialis	0	0	0	0	0	1	0	0	0	0	0	0	0	0	1
Cossura coasta	0	0	0	1	0	0	0	0	0	0	0	0	0	0	0
Chrysopetalidae sp.	0	0	0	0	0	0	0	0	0	0	0	0	0	2	4
Schistomeringos sp.*	0	0	0	0	0	1	0	0	1	0	0	0	0	3	1
Eunice vittata	3	0	0	0	6	2	0	3	7	2	0	7	0	2	0
Lysidice ninetta	0	0	0	0	0	0	0	0	0	0	0	0	0	0	2
Lysidice unicornis	3	1	0	0	5	5	0	2	12	16	7	22	1	2	2
Marphysa bellii	4	0	0	0	5	3	0	1	21	4	12	6	0	0	0
Pherusa sp.	0	0	0	0	0	0	0	1	0	0	0	0	0	0	1
Diplocirrus glaucum	0	0	0	0	0	0	0	0	0	0	0	0	0	2	3
Glycera sp.	4	0	0	1	1	2	0	1	0	8	0	4	2	2	0
Glycera cf celtica	0	0	0	0	0	1	0	0	0	0	0	0	0	0	1
Glycera rouxi	0	1	0	0	0	0	0	0	0	0	1	0	0	0	0
Glycera unicornis	0	0	0	0	0	0	0	0	1	0	0	0	0	0	0
Goniada sp.	0	0	0	0	0	0	0	0	0	0	1	1	1	0	0
Hesionidae sp.	0	0	0	0	0	0	0	0	0	0	0	0	0	3	3
Lumbrineris latreilli	1	0	0	0	4	0	0	3	1	0	1	0	0	0	0
Lumbrineris sp.	0	0	0	0	1	0	0	0	0	5	0	3	0	2	0
Gallardonensis cf iberica	0	0	1	1	0	0	1	1	0	0	0	0	0	0	1
Scoletoma impatiens	0	0	0	0	2	0	0	0	0	0	0	0	0	0	0
Clymenura sp.	0	0	0	0	0	0	0	1	1	0	0	6	0	0	0
Euclymene sp.	1	0	0	1	0	1	0	0	12	1	1	6	0	0	4
Maldanidae*	0	0	0	0	0	2	0	0	0	0	0	0	0	0	0
Nicomache lumbricalis	0	0	0	0	1	0	0	0	0	0	0	0	0	0	0
Praxillella gracilis	0	0	0	0	0	0	0	0	0	1	0	0	0	0	4
Praxillella lophoseta	0	0	0	0	0	1	0	0	3	15	1	4	0	0	1
Rhodine gracilior	0	0	0	6	0	1	0	0	0	0	0	0	0	0	0

SPECIES	1	2	3	4	5	6	7	8	9	10	11	12	13	14	15
Magelona minuta	1	0	0	1	0	2	0	1	3	0	0	0	0	1	0
Magelona cf wilsoni	0	0	0	0	0	0	0	0	4	0	0	0	0	0	0
Nephtys hombergii	0	0	0	0	0	1	0	0	0	0	0	0	0	0	0
Nephtys sp.*	0	0	0	0	0	0	0	0	0	1	0	0	0	0	0
Drilonereis filum	0	0	0	0	1	0	0	0	0	2	0	0	0	0	1
Aponuphis bilineata	0	0	0	0	3	0	0	2	0	1	7	1	0	1	4
Aponuphis cf brementi	0	0	0	0	0	0	0	0	1	0	0	0	0	0	0
Aponuphis fauveli	0	1	0	5	9	5	0	1	6	7	8	5	0	1	0
Apobuphis juv.	0	0	0	1	0	0	0	0	0	0	0	0	0	0	0
Ophelina cylindrica	0	0	0	1	0	0	0	0	0	0	0	0	0	0	0
Owenia fusiformis	0	0	0	0	0	0	0	0	2	0	0	0	0	0	0
Paralacydonia paradoxa	1	0	1	4	7	11	1	8	2	3	2	3	9	1	8
Levinsenia cf demiri	0	4	14	4	0	0	1	0	0	0	0	0	0	0	0
Cirrophorus branchiatus	0	0	0	0	1	0	0	0	0	0	0	0	0	0	0
Paraonidae sp.3	0	0	0	0	0	0	0	0	0	0	0	0	0	9	15
Amphictene auricoma	0	0	0	0	0	0	0	0	0	1	0	0	0	0	0
Phyllodoce maculata	0	0	0	0	0	0	0	0	0	0	1	0	0	0	0
Phyllodoce sp.*	0	0	0	0	1	0	0	0	0	0	0	0	0	0	0
Eteone sp.*	0	0	0	0	0	0	0	0	0	1	0	0	0	0	1
Eumida sp.*	0	0	0	0	1	0	0	0	0	0	0	0	0	0	0
Sigambra tentaculata	0	0	0	0	0	0	0	0	0	0	1	0	0	0	2
Poecilochaetus serpens	2	0	0	0	0	0	0	1	0	2	0	0	0	2	1
Harmothoe sp.*	0	0	0	0	0	0	0	0	0	0	0	2	1	1	0
Chone filicaudata	2	0	0	0	0	0	0	0	0	0	0	0	0	0	2
Scalibregma celticum	0	0	0	0	0	0	0	1	0	0	0	1	1	0	0
Ditrupea arietina	0	0	0	0	0	0	0	0	3	1	0	0	0	0	0
Sthenelais cf limicola	1	0	0	0	0	0	0	0	0	1	0	2	0	0	0
Labioleaneira yhleni	0	0	1	0	0	0	0	0	0	0	0	0	0	0	0
Sternaspis scutata	0	3	2	1	0	0	4	0	0	0	0	0	0	0	0
Aonide oxycephala	0	0	0	0	0	0	0	0	0	0	0	1	0	0	3
Laonice cirrata	0	0	0	1	2	0	2	0	0	1	0	0	0	0	1
Malacoceros fuliginosus	1	0	0	0	0	0	0	0	0	0	0	0	0	0	0
Prionospio sp.1	2	0	3	2	0	0	0	0	0	0	0	0	0	0	0
Prionospio sp.2	1	0	4	4	0	0	0	0	0	0	0	0	0	0	0
Paraprionospio pinnata	0	0	0	7	0	0	1	0	0	0	0	0	3	0	0
Spiophanes sp.*	0	0	0	0	0	1	0	0	0	1	0	0	0	0	0
Exogone cf naidina	0	0	0	0	0	0	0	0	0	0	0	1	0	0	0
Sphaerosyllis histrix	1	0	0	0	0	1	0	1	0	0	0	0	0	0	0
Syllis alternata	0	0	0	0	1	1	0	0	0	0	0	3	0	0	0
Pista cristata	0	0	0	0	1	0	0	0	2	1	1	16	0	0	2
Pista sp.*	0	0	0	0	2	1	0	0	0	0	0	2	0	0	0
Polycirrus sp.*	0	0	0	0	1	0	0	0	0	0	0	3	0	1	0
Terebellidae*	0	0	0	0	0	0	0	0	0	0	1	0	0	0	0
Terebellides stroemii	1	0	0	2	2	0	0	0	0	0	0	2	0	0	2

SPECIES	1	2	3	4	5	6	7	8	9	10	11	12	13	14	15
Crustacea															
<i>Leptocheirus pectinatus</i>	1	0	0	0	1	0	0	0	0	0	0	0	0	0	0
<i>Ampelisca tenuicornis</i>	0	0	0	0	0	1	0	0	0	0	0	0	0	0	0
<i>Ampelisca brevicornis</i>	0	0	0	0	0	0	0	0	0	0	0	0	0	0	7
<i>Ampelisca sp.*</i>	0	0	1	0	0	0	0	1	0	0	0	2	2	1	0
<i>Atylus vedlomensis</i>	0	0	0	0	0	0	0	3	0	0	3	0	0	0	0
<i>Medicorophium runcicorne</i>	0	0	0	0	0	0	0	0	0	0	0	1	0	0	0
<i>Tritaeta gibbosa*****</i>	0	0	0	0	0	0	0	0	0	0	3	0	0	1	0
<i>Erichthonius punctatus</i>	0	0	0	0	0	1	0	0	0	0	0	0	0	0	0
<i>Jassa marmorata</i>	0	0	0	0	0	0	0	0	0	0	0	0	0	2	0
<i>Leucothoe lilljeborgi</i>	0	0	0	0	0	0	0	0	0	0	0	1	0	0	0
<i>Maera grossimana*****</i>	0	0	0	0	2	0	0	0	0	0	0	0	0	0	0
<i>Monoculodes cf acutipes</i>	0	0	0	0	0	0	0	0	0	0	1	1	0	0	0
<i>Periculodes longimanus</i>	1	0	0	0	0	0	0	0	0	0	0	0	0	0	0
<i>Harpinia dellavallei</i>	0	0	0	0	0	0	0	0	0	1	0	0	0	0	0
<i>Urothoe elegans</i>	0	0	0	0	2	0	0	1	0	0	0	1	0	0	0
<i>Atelecyclus rotundatus</i>	0	0	0	0	0	0	0	0	0	0	0	0	1	0	0
<i>Paguristes eremita*****</i>	0	0	0	0	0	0	0	0	0	0	1	0	0	0	0
<i>Ethusa mascarone</i>	0	0	0	0	1	0	0	0	0	0	0	0	0	0	0
<i>Goneplax rhomboides</i>	0	0	2	2	0	0	0	0	0	1	0	0	0	0	0
<i>Ebalia sp.*</i>	0	0	0	0	0	0	0	0	0	0	0	1	0	1	0
<i>Anapagurus sp.*</i>	0	0	0	0	0	0	0	0	0	0	0	1	0	2	1
<i>Penaeidae*</i>	0	0	0	0	0	0	0	0	0	0	0	0	1	0	0
<i>Xantho pilipes</i>	0	0	0	0	1	0	0	0	0	0	0	0	0	0	0
<i>Upogebia larvae</i>	0	0	0	0	0	0	0	0	0	0	0	0	0	0	1
<i>Natatolana neglecta</i>	1	0	0	0	0	0	0	1	0	0	0	2	0	0	0
<i>Gnathia dentata</i>	0	0	0	0	0	0	0	0	0	0	0	0	0	0	1
<i>Kupellonura mediterranea</i>	0	0	0	0	0	0	0	1	0	0	0	0	0	0	0
<i>Apseudopsis sp.**</i>	0	0	0	0	1	2	0	1	0	0	0	5	0	0	0
<i>Apseudes talpa</i>	0	0	0	0	0	0	0	0	0	0	0	0	0	0	1
<i>Leptochelia savignyi</i>	0	0	0	0	0	0	0	1	0	0	0	0	0	0	0
Mollusca															
<i>Arcidae juv.</i>	0	0	0	0	0	0	0	0	1	0	0	0	0	0	0
<i>Digitaria digitaria</i>	0	0	0	0	0	0	0	0	0	0	0	0	0	0	1
<i>Papillicardium papillosum</i>	0	0	0	0	4	0	0	5	0	2	0	6	0	0	0
<i>Corbula gibba</i>	1	0	0	0	4	3	0	3	21	2	1	48	2	1	0
<i>Hiatella arctica</i>	0	0	0	0	0	0	0	0	0	0	0	1	0	2	3
<i>Limaria loscombi</i>	0	0	0	0	0	0	0	0	0	0	1	0	0	0	0
<i>Myrtea spinifera</i>	1	0	0	2	1	3	1	0	8	2	1	3	0	1	0
<i>Loripes lucinalis</i>	0	0	0	0	0	0	0	0	0	0	0	0	0	0	3
<i>Lucinidae juv sp.2</i>	0	0	0	0	0	0	0	0	4	0	0	1	0	0	0
<i>Tellimya ferruginosa</i>	0	0	0	0	0	0	0	0	0	0	0	0	0	0	1
<i>Mytilus galloprovincialis</i>	0	0	0	0	1	0	0	0	0	0	0	0	0	0	0
<i>Nucula juv.</i>	0	0	0	0	0	0	1	1	3	0	0	0	0	0	0

SPECIES	1	2	3	4	5	6	7	8	9	10	11	12	13	14	15
Phaxas cf pellucidus	2	0	0	0	3	0	0	0	0	0	0	2	0	0	0
Abra alba	0	0	0	0	0	0	0	0	0	0	0	5	0	0	0
Abra nitida	0	0	1	0	0	0	2	0	0	0	0	0	0	0	0
Solemya togata	0	0	0	0	0	0	0	0	1	0	0	0	0	0	2
Arcopagia balaustina	0	0	0	0	0	0	0	0	0	0	1	0	0	0	0
Moerella (tellina) distorta	0	0	0	0	0	0	1	0	0	0	0	0	0	0	0
Moerella (tellina) cf donacina	0	0	0	0	0	0	0	0	0	1	2	1	1	0	1
Tellina serrata	0	0	0	0	0	0	0	0	0	0	0	1	0	0	0
Tellina juv.	1	0	0	0	0	1	0	0	0	1	0	2	0	0	0
Thracia juv.	0	0	0	0	0	0	0	0	1	0	0	0	0	0	1
Thyasira flexuosa	1	0	0	1	0	0	0	0	10	0	0	0	0	0	0
Clausinella brongniartii ***	2	0	0	0	0	0	1	0	0	1	0	0	0	0	0
Pitar rudis	0	0	0	0	0	0	0	2	1	0	0	0	0	0	0
Timoclea ovata	5	0	0	2	1	3	0	3	6	0	1	7	0	4	6
Caecum cf trachea	0	0	0	0	0	0	0	0	0	0	0	0	0	1	1
Calyptraea chinensis	0	0	0	0	0	0	0	1	0	0	0	0	0	0	0
Capulus ungaricus	0	0	0	0	0	0	0	0	0	0	0	0	0	0	1
Emarginula rosea	0	0	0	0	0	0	0	0	0	0	0	0	0	0	1
Euspira cf pulchella	0	0	0	0	0	0	0	0	0	0	0	2	0	1	3
Leptochitonidae juv.	0	0	0	0	0	0	0	0	0	0	0	0	0	2	2
Acanthochitona juv.	0	0	0	0	0	0	0	0	0	0	0	1	0	0	0
Antalis novemcostata****	0	0	0	0	0	0	0	1	1	0	0	0	0	0	0
Echinodermata															
Amphiura filiformis	0	0	0	0	1	0	0	1	0	0	0	0	0	0	0
Amphiura chiajei	0	0	0	0	0	0	0	0	0	0	1	0	0	0	1
Amphipholis squamata	0	0	0	0	0	0	0	0	0	15	0	5	0	5	3
Ophiura ophiura	0	0	0	0	0	0	0	0	0	0	0	0	0	1	1
Ophiuroidea sp.	0	0	0	0	0	0	0	0	0	0	0	0	0	0	1
Ophiocten affinis	2	0	0	0	0	0	0	0	0	0	1	0	2	0	0
Cidaris cidaris	0	0	0	0	0	0	0	0	0	0	0	0	0	0	1
Echinocyamus pusillus	0	0	0	0	0	0	0	0	0	0	0	1	0	1	2
Sipuncula															
Aspidosiphon muelleri	0	0	0	0	1	5	1	0	2	1	0	0	0	1	0
Phascolosoma sp.	0	0	0	0	0	0	0	0	1	0	0	0	0	1	0
Onchnosoma steenstrupii	2	0	0	1	2	0	0	0	0	0	0	0	0	0	0
Golfingiiformes sp.26*	0	0	0	0	0	0	0	1	0	1	0	0	0	0	0
Varia taxa															
Asciacea sp.1*	0	0	0	0	1	0	0	0	0	0	0	0	0	0	0
Branchiostoma lanceolatum	0	0	0	0	0	0	0	0	0	0	0	0	0	0	1
Suberites domuncula	0	0	0	0	0	0	0	0	0	0	1	0	0	0	0
Echiura7*	0	0	0	0	0	0	0	2	0	0	0	0	0	0	0
Phoronida	0	0	0	0	0	0	0	0	10	1	0	0	0	0	0
Nematoda	7	0	0	2	0	2	0	0	1	5	1	6	0	16	13
Nemertea	1	0	0	2	0	3	1	0	3	0	0	6	0	2	1

* Specimens incomplete, without structures useful to follow the keys

** The spines distribution under periopod 1 and the hyposphenia number disagree with all species which are described at the moment.

*** Some authors think *Clausinella brongniartii* (Payraudeau, 1826) is a Mediterranean and different species but nowadays it only looks like an intermediate shape between juvenile and mature state of *Clausinella fasciata*. (Gofas, S.; Salas, C.; Moreno, D. Moluscos Marinos de Andalucia. Junta de Andalucia, Consejería de Medio Ambiente, Sevilla 2010)

**** *Antalis inaequicostata* is usually used for Mediterranean shape of *Antalis novemcostata* but nowadays is not completely accepted. (Gofas, S.; Salas, C.; Moreno, D. Moluscos Marinos de Andalucia. Junta de Andalucia, Consejería de Medio Ambiente, Sevilla 2010)

***** Symbiotic relationship

5.2. APPENDIX II

Taxa	KAVALA GULF MAY'15															
	KAV 1.1	KAV 1.2	KAV 1.3	KAV 1.4	KAV 1.5	KAV 2.1	KAV 2.2	KAV 2.3	KAV 2.4	KAV 2.5	KAV 3.1	KAV 3.2	KAV 3.3	KAV 3.4	KAV 3.5	KAV 4.1
Annelida																
<i>Ampharete cf lindstroemi</i>		2														
<i>Amphicteis gunneri</i>																
<i>Laetmonice (Hermione) hystrix</i>																
<i>Notomastus latericeus</i>																
<i>Aphelochaeta marioni</i>																2
<i>Chaetozone cf gibber</i>																
<i>Chaetozone sp.</i>																
Cirratulidae*																
<i>Monticellina dorsobranchialis</i>																
<i>Cossura coasta</i>																
Chrysopetalidae sp.																
<i>Schistomeringos sp.*</i>																
<i>Eunice vittata</i>	1	1		1												
<i>Lysidice ninetta</i>																
<i>Lysidice unicornis</i>	1	1	1			1										
<i>Marphysa bellii</i>	1	1	1	1												
<i>Pherusa sp.</i>																
<i>Diplocirrus glaucum</i>																
<i>Glycera sp.</i>	1	1	2													
<i>Glycera cf celtica</i>																
<i>Glycera rouxi</i>								1								
<i>Glycera unicornis</i>																
<i>Goniada sp.</i>																
Hesionidae sp.																
<i>Lumbrineris latreilli</i>	1															
<i>Lumbrineris sp.</i>																
<i>Gallardoneris cf iberica</i>											1					
<i>Scoletoma impatiens</i>																
<i>Clymenura sp.</i>																
<i>Euclymene sp.</i>	1															
Maldanidae*																
<i>Nicomache lumbricalis</i>																
<i>Praxillella gracilis</i>																
<i>Praxillella lophoseta</i>																
<i>Rhodine gracilior</i>																2
<i>Magelona minuta</i>					1											
<i>Magelona cf wilsoni</i>																
<i>Nephtys hombergii</i>																
<i>Nephtys sp.*</i>																
<i>Drilonereis filum</i>																
<i>Aponuphis bilineata</i>																
<i>Aponuphis cf brementi</i>																
<i>Aponuphis fauveli</i>							1									1
<i>Apobuphis juv.</i>																
<i>Ophelina cylindricaudata</i>																1
<i>Owenia fusiformis</i>																
<i>Paralacydonia paradoxa</i>		1										1				1
<i>Levinsenia cf demiri</i>									4		6	2	1	3	2	1
<i>Cirrophorus branchiatus</i>																
Paraonidae sp.3																
<i>Amphictene auricoma</i>																

Taxa	KAVALA GULF MAY'15															
	KAV 1.1	KAV 1.2	KAV 1.3	KAV 1.4	KAV 1.5	KAV 2.1	KAV 2.2	KAV 2.3	KAV 2.4	KAV 2.5	KAV 3.1	KAV 3.2	KAV 3.3	KAV 3.4	KAV 3.5	KAV 4.1
<i>Phyllodoce maculata</i>																
<i>Phyllodoce</i> sp.*																
<i>Eteone</i> sp.*																
<i>Eumida</i> sp.*																
<i>Sigambra tentaculata</i>																
<i>Poecilochaetus serpens</i>	1	1														
<i>Harmothoe</i> sp.*																
<i>Chone filicaudata</i>		2														
<i>Scalibregma celticum</i>																
<i>Ditrupa arietina</i>																
<i>Sthenelais cf limicola</i>	1															
<i>Labioleanira yhleni</i>															1	
<i>Sternaspis scutata</i>						2	1				1	1				
<i>Aonide oxycephala</i>																
<i>Laonice cirrata</i>																
<i>Malacoceros fuliginosus</i>				1												
<i>Prionospio</i> sp.1	2												2	1		
<i>Prionospio</i> sp.2		1											1	2	1	1
<i>Paraprionospio pinnata</i>																2
<i>Spiophanes</i> sp.*																
<i>Exogone cf naidina</i>																
<i>Sphaerosyllis histryx</i>		1														
<i>Syllis alternata</i>																
<i>Pista cristata</i>																
<i>Pista</i> sp.*																
<i>Polycirrus</i> sp.*																
Terebellidae*																
<i>Terebellides stroemii</i>		1														1
Arthropoda																
<i>Leptocheirus pectinatus</i>				1												
<i>Ampelisca tenuicornis</i>																
<i>Ampelisca brevicornis</i>																
<i>Ampelisca</i> sp.*															1	
<i>Atylus vedlomensis</i>																
<i>Medicorophium runcicorne</i>																
<i>Tritaeta gibbosa</i> *****																
<i>Erichthonius punctatus</i>																
<i>Jassa marmorata</i>																
<i>Leucothoe lilljerborgi</i>																
<i>Maera grossimana</i> *****																
<i>Monoculodes cf acutipes</i>																
<i>Perioculodes longimanus</i>					1											
<i>Harpinia dellavallei</i>																
<i>Urothoe elegans</i>																
<i>Atelecyclus rotundatus</i>																
<i>Paguristes eremita</i> *****																
<i>Ethusa mascarone</i>																
<i>Goneplax rhomboides</i>												1		1		1
<i>Ebalia</i> sp.*																
<i>Anapagurus</i> sp.*																
Penaeidae*																
<i>Xantho pilipes</i>																

Taxa	KAVALA GULF MAY'15															
	KAV 1.1	KAV 1.2	KAV 1.3	KAV 1.4	KAV 1.5	KAV 2.1	KAV 2.2	KAV 2.3	KAV 2.4	KAV 2.5	KAV 3.1	KAV 3.2	KAV 3.3	KAV 3.4	KAV 3.5	KAV 4.1
<i>Upogebia larvae</i>																
<i>Natatolana neglecta</i>					1											
<i>Gnathia dentata</i>																
<i>Kupellonura mediterranea</i>																
<i>Apseudopsis</i> sp. **																
<i>Apseudes talpa</i>																
<i>Leptochelia savignyi</i>																
Mollusca																
<i>Arcidae</i> juv.																
<i>Digitaria digitaria</i>																
<i>Papillicardium papillosum</i>																
<i>Corbula gibba</i>		1														
<i>Hiatella arctica</i>																
<i>Limaria loscombi</i>																
<i>Myrtea spinifera</i>	1															
<i>Loripes lucinalis</i>																
<i>Lucinidae</i> juv sp.2																
<i>Tellimya ferruginosa</i>																
<i>Mytilus galloprovincialis</i>																
<i>Nucula</i> juv.																
<i>Phaxas</i> cf <i>pellucidus</i>	2															
<i>Abra alba</i>																
<i>Abra nitida</i>															1	
<i>Solemya togata</i>																
<i>Arcopagia balaustina</i>																
<i>Moerella</i> (<i>tellina</i>) <i>distorta</i>																
<i>Moerella</i> (<i>tellina</i>) cf <i>donacina</i>																
<i>Tellina serrata</i>																
<i>Tellina</i> juv.		1														
<i>Thracia</i> juv.																
<i>Thyasira flexuosa</i>		1														
<i>Clausinella brongniartii</i> ***			1		1											
<i>Pitar rudis</i>																
<i>Timoclea ovata</i>	1	2		1	1											
<i>Caecum</i> cf <i>trachea</i>																
<i>Calyptrea chinensis</i>																
<i>Capulus ungaricus</i>																
<i>Emarginula rosea</i>																
<i>Euspira</i> cf <i>pulchella</i>																
<i>Leptochitonidae</i> juv.																
<i>Acanthochitona</i> juv.																
<i>Antalis novemcostata</i> ****																
Echinodermata																
<i>Amphiura filiformis</i>																
<i>Amphiura chiajei</i>																
<i>Amphiphipils squamata</i>																
<i>Ophiura ophiura</i>																
<i>Ophiuroidea</i> sp.																
<i>Ophiecten affinis</i>				2												
<i>Cidaris cidaris</i>																
<i>Echinocyamus pusillus</i>																
Sipuncula																

Taxa	KAVALA GULF MAY'15															
	KAV 1.1	KAV 1.2	KAV 1.3	KAV 1.4	KAV 1.5	KAV 2.1	KAV 2.2	KAV 2.3	KAV 2.4	KAV 2.5	KAV 3.1	KAV 3.2	KAV 3.3	KAV 3.4	KAV 3.5	KAV 4.1
<i>Aspidosiphon muelleri</i>																
<i>Phascolosoma</i> sp.																
<i>Onchnosoma steenstrupii</i>					2											
Golfingiiformes sp.2 ^{6*}																
Chordata																
Ascidacea sp.1*																
Ascidacea juv sp.2																
<i>Branchiostoma lanceolatum</i>																
Porifera																
<i>Suberites domuncula</i> *****																
Miscellanea																
Echiura ^{7*}																
Phoronida																
Nematoda	1	2			4											
Nemertea					1											
Nº Specimens	15	20	5	7	12	3	2	1	4	0	8	5	4	7	6	13
Nº Taxa	13	16	4	6	8	2	2	1	1	0	3	4	3	4	5	10

* Specimens incomplete, without structures useful to follow the keys
** The spines distribution under periopod 1 and the hyposphenia number disagree with all species which are descrited at the moment.

*** Some authors think *Clausinella brongniartii* (Payraudeau, 1826) is a Mediterranean and different specie but nowadays it only looks like an intermediate shape between juvenile and mature state of *Clausinella fasciata* . (Gofas, S.; Salas, C.; Moreno, D. Moluscos Marinos de Andalucia. Junta de Andalucia, Consejeria de Medio Ambiente, Sevilla 2010)

**** *Antalis inaequicostata* is usually used for Mediterraneans shape of *Antalis novemcostata* but nowadays is not completely accept. (Gofas, S.; Salas, C.; Moreno, D. Moluscos Marinos de Andalucia. Junta de Andalucia, Consejeria de Medio Ambiente, Sevilla 2010)
***** Symbiotic relationship

6* *Onchnosoma steenstrupii* is also Order Golfingiiformes. (Saiz Salinas, J.I. 1993. Sipuncula. Fauna Ibérica, vol 4, CSIC)

7* **Phylum or Subclass**

Taxa	KAVALA GULF MAY'15															
	KAV 4.2	KAV 4.3	KAV 4.4	KAV 4.5	KAV 5.1	KAV 5.2	KAV 5.3	KAV 5.4	KAV 5.5	KAV 6.1	KAV 6.2	KAV 6.3	KAV 6.4	KAV 6.5	KAV 7.1	KAV 7.2
Annelida																
<i>Ampharete cf lindstroemi</i>																
<i>Amphicteis gunneri</i>									1							
<i>Laetmonice (Hermione) hystrix</i>																
<i>Notomastus latericeus</i>				1							1		1			
<i>Aphelochaeta marioni</i>										2						
<i>Chaetozone cf gibber</i>																
<i>Chaetozone sp.</i>																
Cirratulidae*																
<i>Monticellina dorsobranchialis</i>														1		
<i>Cossura coasta</i>		1														
Chrysopetalidae sp.																
<i>Schistomeringos sp.*</i>													1			
<i>Eunice vittata</i>					2	1	2	1		2						
<i>Lysidice ninetta</i>																
<i>Lysidice unicornis</i>					2	1		1	1			3	1	1		
<i>Marphysa bellii</i>					2	1		1	1	1		1	1			
<i>Pherusa sp.</i>																
<i>Diplocirrus glaucum</i>																
<i>Glycera sp.</i>	1								1			2				
<i>Glycera cf celtica</i>											1					
<i>Glycera rouxi</i>																
<i>Glycera unicornis</i>																
<i>Goniada sp.</i>																
Hesionidae sp.																
<i>Lumbrineris latreilli</i>							2	1	1							
<i>Lumbrineris sp.</i>						1										
<i>Gallardoneris cf iberica</i>				1												
<i>Scoletoma impatiens</i>						2										
<i>Clymenura sp.</i>																
<i>Euclymene sp.</i>				1								1				
Maldanidae*												2				
<i>Nicomache lumbricalis</i>									1							
<i>Praxillella gracilis</i>																
<i>Praxillella lophoseta</i>													1			
<i>Rhodine gracilior</i>	1	3								1						
<i>Magelona minuta</i>		1										2				
<i>Magelona cf wilsoni</i>																
<i>Nephtys hombergii</i>										1						
<i>Nephtys sp.*</i>																
<i>Drilonereis filum</i>						1										
<i>Aponuphis bilineata</i>							1	1	1							
<i>Aponuphis cf brementi</i>																
<i>Aponuphis fauveli</i>			1	3			3	4	2			2	2	1		
<i>Apobuphis juv.</i>	1															
<i>Ophelina cylindricaudata</i>																
<i>Owenia fusiformis</i>																
<i>Paralacydonia paradoxa</i>	1	1		1		2	2	1	2	3	3	1	1	3		1
<i>Levinsenia cf demiri</i>	1	2														1
<i>Cirrophorus branchiatus</i>									1							
Paraonidae sp.3																
<i>Amphictene auricoma</i>																

Taxa	KAVALA GULF MAY'15															
	KAV 4.2	KAV 4.3	KAV 4.4	KAV 4.5	KAV 5.1	KAV 5.2	KAV 5.3	KAV 5.4	KAV 5.5	KAV 6.1	KAV 6.2	KAV 6.3	KAV 6.4	KAV 6.5	KAV 7.1	KAV 7.2
<i>Phyllodoce maculata</i>																
<i>Phyllodoce</i> sp.*							1									
<i>Eteone</i> sp.*																
<i>Eumida</i> sp.*								1								
<i>Sigambra tentaculata</i>																
<i>Poecilochaetus serpens</i>																
<i>Harmothoe</i> sp.*																
<i>Chone filicaudata</i>																
<i>Scalibregma celticum</i>																
<i>Ditrupa arietina</i>																
<i>Sthenelais cf limicola</i>																
<i>Labioleanira yhleni</i>																
<i>Sternaspis scutata</i>			1													1
<i>Aonide oxycephala</i>																
<i>Laonice cirrata</i>		1				1	1									1
<i>Malacoceros fuliginosus</i>																
<i>Prionospio</i> sp.1		2														
<i>Prionospio</i> sp.2	3															
<i>Paraprionospio pinnata</i>	3			2											1	
<i>Spiophanes</i> sp.*													1			
<i>Exogone cf naidina</i>																
<i>Sphaerosyllis histryx</i>												1				
<i>Syllis alternata</i>							1					1				
<i>Pista cristata</i>							1									
<i>Pista</i> sp.*									2					1		
<i>Polycirrus</i> sp.*									1							
Terebellidae*																
<i>Terebellides stroemii</i>			1		1		1									
Arthropoda																
<i>Leptocheirus pectinatus</i>							1									
<i>Ampelisca tenuicornis</i>										1						
<i>Ampelisca brevicornis</i>																
<i>Ampelisca</i> sp.*																
<i>Atylus vedlomensis</i>																
<i>Medicorophium runcicorne</i>																
<i>Tritaeta gibbosa</i> *****																
<i>Erichthonius punctatus</i>												1				
<i>Jassa marmorata</i>																
<i>Leucothoe lilljeborgi</i>																
<i>Maera grossimana</i> *****							2									
<i>Monoculodes cf acutipes</i>																
<i>Perioculodes longimanus</i>																
<i>Harpinia dellavallei</i>																
<i>Urothoe elegans</i>					1	1										
<i>Atelecyclus rotundatus</i>																
<i>Paguristes eremita</i> *****																
<i>Ethusa mascarone</i>							1									
<i>Goneplax rhomboides</i>			1													
<i>Ebalia</i> sp.*																
<i>Anapagurus</i> sp.*																
Penaeidae*																
<i>Xantho pilipes</i>						1										

Taxa	KAVALA GULF MAY'15															
	KAV 4.2	KAV 4.3	KAV 4.4	KAV 4.5	KAV 5.1	KAV 5.2	KAV 5.3	KAV 5.4	KAV 5.5	KAV 6.1	KAV 6.2	KAV 6.3	KAV 6.4	KAV 6.5	KAV 7.1	KAV 7.2
<i>Upogebia larvae</i>																
<i>Natatolana neglecta</i>																
<i>Gnathia dentata</i>																
<i>Kupellonura mediterranea</i>																
<i>Apseudopsis</i> sp. **							1			2						
<i>Apseudes talpa</i>																
<i>Leptochelia savignyi</i>																
Mollusca																
<i>Arcidae</i> juv.																
<i>Digitaria digitaria</i>																
<i>Papillicardium papillosum</i>						1	3									
<i>Corbula gibba</i>					3		1			1	1			1		
<i>Hiatella arctica</i>																
<i>Limaria loscombi</i>																
<i>Myrtea spinifera</i>	2				1					1	1	1				1
<i>Loripes lucinalis</i>																
<i>Lucinidae</i> juv sp.2																
<i>Tellimya ferruginosa</i>																
<i>Mytilus galloprovincialis</i>									1							
<i>Nucula</i> juv.																
<i>Phaxas</i> cf <i>pellucidus</i>						2		1								
<i>Abra alba</i>																
<i>Abra nitida</i>																1
<i>Solemya togata</i>																
<i>Arcopagia balaustina</i>																
<i>Moerella</i> (tellina) <i>distorta</i>															1	
<i>Moerella</i> (tellina) cf <i>donacina</i>																
<i>Tellina serrata</i>																
<i>Tellina</i> juv.													1			
<i>Thracia</i> juv.																
<i>Thyasira flexuosa</i>	1															
<i>Clausinella brongniartii</i> ***																
<i>Pitar rudis</i>																
<i>Timoclea ovata</i>	2				1					1		1		1		
<i>Caecum</i> cf <i>trachea</i>																
<i>Calyptrea chinensis</i>																
<i>Capulus ungaricus</i>																
<i>Emarginula rosea</i>																
<i>Euspira</i> cf <i>pulchella</i>																
<i>Leptochitonidae</i> juv.																
<i>Acanthochitona</i> juv.																
<i>Antalis novemcostata</i> ****																
Echinodermata																
<i>Amphiura filiformis</i>					1											
<i>Amphiura chiajei</i>																
<i>Amphiphipils squamata</i>																
<i>Ophiura ophiura</i>																
<i>Ophiuroidea</i> sp.																
<i>Ophiocten affinis</i>																
<i>Cidaris cidaris</i>																
<i>Echinocyamus pusillus</i>																
Sipuncula																

Taxa	KAVALA GULF MAY'15															
	KAV 4.2	KAV 4.3	KAV 4.4	KAV 4.5	KAV 5.1	KAV 5.2	KAV 5.3	KAV 5.4	KAV 5.5	KAV 6.1	KAV 6.2	KAV 6.3	KAV 6.4	KAV 6.5	KAV 7.1	KAV 7.2
<i>Aspidosiphon muelleri</i>									1	1	2	1	1			
<i>Phascolosoma</i> sp.																
<i>Onchnosoma steenstrupii</i>		1				2										
Golfingiiformes sp.2 ^{6*}																
Chordata																
Ascidacea sp.1*						1										
Ascidacea juv sp.2																
<i>Branchiostoma lanceolatum</i>																
Porifera																
<i>Suberites domuncula</i> *****																
Miscellanea																
Echiura ⁷																
Phoronida																
Nematoda	1	1											2			
Nemertea	2									1				2		
Nº Specimens	19	13	4	9	14	20	22	12	17	18	9	20	13	11	2	6
Nº Taxa	12	9	4	6	9	15	15	9	14	13	6	14	11	8	2	6

Taxa	KAVALA GULF MAY'15															
	KAV 7.3	KAV 7.4	KAV 7.5	KAV 8.1	KAV 8.2	KAV 8.3	KAV 8.4	KAV 8.5	KAV 9.1	KAV 9.2	KAV 9.3	KAV 9.4	KAV 9.5	KAV 10.1	KAV 10.2	KAV 10.3
Annelida																
<i>Ampharete cf lindstroemi</i>																
<i>Amphicteis gunneri</i>																
<i>Laetmonice (Hermione) hystrix</i>					1											
<i>Notomastus latericeus</i>				1									1			
<i>Aphelochaeta marioni</i>																
<i>Chaetozone cf gibber</i>															1	
<i>Chaetozone</i> sp.																
Cirratulidae*														2		
<i>Monticellina dorsobranchialis</i>																
<i>Cossura coasta</i>																
Chrysopetalidae sp.																
<i>Schistomeringos</i> sp.*													1			
<i>Eunice vittata</i>				1			2		1	4	1	1		1	1	
<i>Lysidice ninetta</i>																
<i>Lysidice unicornis</i>						2				5	1	5	1	4	5	2
<i>Marphysa bellii</i>				1					3	7	3	2	6		2	1
<i>Pherusa</i> sp.					1											
<i>Diplocirrus glaucum</i>																
<i>Glycera</i> sp.						1								1	3	3
<i>Glycera cf celtica</i>																
<i>Glycera rouxi</i>																
<i>Glycera unicornis</i>													1			
<i>Goniada</i> sp.																
Hesionidae sp.																
<i>Lumbrineris latreilli</i>				1				2					1			
<i>Lumbrineris</i> sp.															1	4
<i>Gallardoneris cf iberica</i>			1			1										
<i>Scoletoma impatiens</i>																
<i>Clymenura</i> sp.							1						1			
<i>Euclymene</i> sp.									5	2		5			1	
Maldanidae*																
<i>Nicomache lumbricalis</i>																
<i>Praxillella gracilis</i>																
<i>Praxillella lophoseta</i>											3			2	9	1
<i>Rhodine gracilior</i>																
<i>Magelona minuta</i>					1					1	1	1				
<i>Magelona cf wilsoni</i>									2			2				
<i>Nephtys hombergii</i>																
<i>Nephtys</i> sp.*																1
<i>Drilonereis filum</i>																
<i>Aponuphis bilineata</i>				1			1									
<i>Aponuphis cf brementi</i>													1			
<i>Aponuphis fauveli</i>						1					4		2	1		3
<i>Apobuphis</i> juv.																
<i>Ophelina cylindricaudata</i>																
<i>Owenia fusiformis</i>											1	1				
<i>Paralacydonia paradoxa</i>				2		3	1	2					2	3		
<i>Levinsenia cf demiri</i>																
<i>Cirrophorus branchiatus</i>																
Paraonidae sp.3																
<i>Amphictene auricoma</i>														1		

Taxa	KAVALA GULF MAY'15															
	KAV 7.3	KAV 7.4	KAV 7.5	KAV 8.1	KAV 8.2	KAV 8.3	KAV 8.4	KAV 8.5	KAV 9.1	KAV 9.2	KAV 9.3	KAV 9.4	KAV 9.5	KAV 10.1	KAV 10.2	KAV 10.3
<i>Phyllodoce maculata</i>																
<i>Phyllodoce</i> sp.*																
<i>Eteone</i> sp.*																1
<i>Eumida</i> sp.*																
<i>Sigambra tentaculata</i>																
<i>Poecilochaetus serpens</i>							1								1	
<i>Harmothoe</i> sp.*																
<i>Chone filicaudata</i>																
<i>Scalibregma celticum</i>				1												
<i>Ditrupa arietina</i>										1	1	1				1
<i>Sthenelais cf limicola</i>																
<i>Labioleanira yhleni</i>																
<i>Sternaspis scutata</i>	1	1	1													
<i>Aonide oxycephala</i>																
<i>Laonice cirrata</i>	1															1
<i>Malacoceros fuliginosus</i>																
<i>Prionospio</i> sp.1																
<i>Prionospio</i> sp.2																
<i>Paraprionospio pinnata</i>																
<i>Spiophanes</i> sp.*														1		
<i>Exogone cf naidina</i>																
<i>Sphaerosyllis histryx</i>						1										
<i>Syllis alternata</i>																
<i>Pista cristata</i>													2	1		
<i>Pista</i> sp.*																
<i>Polycirrus</i> sp.*																
Terebellidae*																
<i>Terebellides stroemii</i>																
Arthropoda																
<i>Leptocheirus pectinatus</i>																
<i>Ampelisca tenuicornis</i>																
<i>Ampelisca brevicornis</i>																
<i>Ampelisca</i> sp.*					1											
<i>Atylus vedlomensis</i>				1	2											
<i>Medicorophium runcicorne</i>																
<i>Tritaeta gibbosa</i> *****																
<i>Erichthonius punctatus</i>																
<i>Jassa marmorata</i>																
<i>Leucothoe lilljeborgi</i>																
<i>Maera grossimana</i> *****																
<i>Monoculodes cf acutipes</i>																
<i>Perioculodes longimanus</i>																
<i>Harpinia dellavallei</i>														1		
<i>Urothoe elegans</i>							1									
<i>Atelecyclus rotundatus</i>																
<i>Paguristes eremita</i> *****																
<i>Ethusa mascarone</i>																
<i>Goneplax rhomboides</i>																1
<i>Ebalia</i> sp.*																
<i>Anapagurus</i> sp.*																
Penaeidae*																
<i>Xantho pilipes</i>																

Taxa	KAVALA GULF MAY'15															
	KAV 7.3	KAV 7.4	KAV 7.5	KAV 8.1	KAV 8.2	KAV 8.3	KAV 8.4	KAV 8.5	KAV 9.1	KAV 9.2	KAV 9.3	KAV 9.4	KAV 9.5	KAV 10.1	KAV 10.2	KAV 10.3
<i>Upogebia larvae</i>																
<i>Natatolana neglecta</i>					1											
<i>Gnathia dentata</i>																
<i>Kupellonura mediterranea</i>						1										
<i>Apseudopsis</i> sp. **				1												
<i>Apseudes talpa</i>																
<i>Leptochelia savignyi</i>					1											
Mollusca																
<i>Arcidae</i> juv.												1				
<i>Digitaria digitaria</i>																
<i>Papillicardium papillosum</i>						2	2	1						2		
<i>Corbula gibba</i>						2	1				2	3	16	1		
<i>Hiatella arctica</i>																
<i>Limaria loscombi</i>																
<i>Myrtea spinifera</i>									3	3		1	1		1	1
<i>Loripes lucinalis</i>																
<i>Lucinidae</i> juv sp.2									1		1	2				
<i>Tellimya ferruginosa</i>																
<i>Mytilus galloprovincialis</i>																
<i>Nucula</i> juv.		1					1					2	1			
<i>Phaxas cf pellucidus</i>																
<i>Abra alba</i>																
<i>Abra nitida</i>		1														
<i>Solemya togata</i>													1			
<i>Arcopagia balaustina</i>																
<i>Moerella (tellina) distorta</i>																
<i>Moerella (tellina) cf donacina</i>															1	
<i>Tellina serrata</i>																
<i>Tellina</i> juv.														1		
<i>Thracia</i> juv.										1						
<i>Thyasira flexuosa</i>									1		2	6	1			
<i>Clausinella brongniartii</i> ***		1														
<i>Pitar rudis</i>						1	1			1						
<i>Timoclea ovata</i>					1	1	1			2	2	1	1			
<i>Caecum cf trachea</i>																
<i>Calyptraea chinensis</i>								1								
<i>Capulus ungaricus</i>																
<i>Emarginula rosea</i>																
<i>Euspira cf pulchella</i>																
<i>Leptochitonidae</i> juv.																
<i>Acanthochitona</i> juv.																
<i>Antalis novemcostata</i> ****				1							1					
Echinodermata																
<i>Amphiura filiformis</i>								1								
<i>Amphiura chiajei</i>																
<i>Amphiphipils squamata</i>														7	2	1
<i>Ophiura ophiura</i>																
<i>Ophiuroidea</i> sp.																
<i>Ophiocten affinis</i>																
<i>Cidaris cidaris</i>																
<i>Echinocyamus pusillus</i>																
Sipuncula																

Taxa	KAVALA GULF MAY'15															
	KAV 7.3	KAV 7.4	KAV 7.5	KAV 8.1	KAV 8.2	KAV 8.3	KAV 8.4	KAV 8.5	KAV 9.1	KAV 9.2	KAV 9.3	KAV 9.4	KAV 9.5	KAV 10.1	KAV 10.2	KAV 10.3
<i>Aspidosiphon muelleri</i>		1										1	1			
<i>Phascolosoma</i> sp.										1						
<i>Onchnosoma steenstrupii</i>																
Golfingiiformes sp.2 ^{6*}					1									1		
Chordata																
Asciacea sp.1*																
Asciacea juv sp.2																
<i>Branchiostoma lanceolatum</i>																
Porifera																
<i>Suberites domuncula</i> *****																
Miscellanea																
Echiura ⁷					2											
Phoronida									1	4	1	1	3			
Nematoda													1	4		
Nemertea	1								1	1	1					
Nº Specimens	3	5	2	11	12	16	13	7	18	33	25	36	45	34	28	21
Nº Taxa	3	5	2	10	10	11	11	5	9	13	15	17	20	17	12	13

Taxa	KAVALA GULF MAY'15															
	KAV 10.4	KAV 10.5	KAV 11.1	KAV 11.2	KAV 11.3	KAV 11.4	KAV 11.5	KAV 12.1	KAV 12.2	KAV 12.3	KAV 12.4	KAV 12.5	KAV 13.1	KAV 13.2	KAV 13.3	KAV 13.4
Annelida																
<i>Ampharete cf lindstroemi</i>																
<i>Amphicteis gunneri</i>																
<i>Laetmonice (Hermione) hystrix</i>																
<i>Notomastus latericeus</i>							1			1						
<i>Aphelochaeta marioni</i>																
<i>Chaetozone cf gibber</i>		1					1									
<i>Chaetozone sp.</i>				1												
Cirratulidae*	2															
<i>Monticellina dorsobranchialis</i>																
<i>Cossura coasta</i>																
Chrysopetalidae sp.																
<i>Schistomeringos sp.*</i>																
<i>Eunice vittata</i>								4	1		2					
<i>Lysidice ninetta</i>																
<i>Lysidice unicornis</i>	2	3	1	2		2	2	6	4	2	5	5				1
<i>Marphysa bellii</i>	1		2	4	2	1	3	1	1		1	3				
<i>Pherusa sp.</i>																
<i>Diplocirrus glaucum</i>																
<i>Glycera sp.</i>	1								1		2	1				
<i>Glycera cf celtica</i>																
<i>Glycera rouxi</i>				1												
<i>Glycera unicornis</i>																
<i>Goniada sp.</i>					1				1				1			
Hesionidae sp.																
<i>Lumbrineris latreilli</i>			1													
<i>Lumbrineris sp.</i>								2	1							
<i>Gallardoneris cf iberica</i>																
<i>Scoletoma impatiens</i>																
<i>Clymenura sp.</i>									1		2	3				
<i>Euclymene sp.</i>						1		2	1	1	2					
Maldanidae*																
<i>Nicomache lumbricalis</i>																
<i>Praxillella gracilis</i>		1														
<i>Praxillella lophoseta</i>	1	2	1					1	1			2				
<i>Rhodine gracilior</i>																
<i>Magelona minuta</i>																
<i>Magelona cf wilsoni</i>																
<i>Nephtys hombergii</i>																
<i>Nephtys sp.*</i>																
<i>Drilonereis filum</i>	2															
<i>Aponuphis bilineata</i>	1		2	3	1		1			1						
<i>Aponuphis cf brementi</i>																
<i>Aponuphis fauveli</i>	2	1	2		4	1	1			1	1	3				
<i>Apobuphis juv.</i>																
<i>Ophelina cylindricaudata</i>																
<i>Owenia fusiformis</i>																
<i>Paralacydonia paradoxa</i>			1	1						1	2		2	1	1	4
<i>Levinsenia cf demiri</i>																
<i>Cirrophorus branchiatus</i>																
Paraonidae sp.3																
<i>Amphictene auricoma</i>																

Taxa	KAVALA GULF MAY'15															
	KAV 10.4	KAV 10.5	KAV 11.1	KAV 11.2	KAV 11.3	KAV 11.4	KAV 11.5	KAV 12.1	KAV 12.2	KAV 12.3	KAV 12.4	KAV 12.5	KAV 13.1	KAV 13.2	KAV 13.3	KAV 13.4
<i>Phyllodoce maculata</i>							1									
<i>Phyllodoce</i> sp.*																
<i>Eteone</i> sp.*																
<i>Eumida</i> sp.*																
<i>Sigambra tentaculata</i>					1											
<i>Poecilochaetus serpens</i>	1															
<i>Harmothoe</i> sp.*											1	1	1			
<i>Chone filicaudata</i>																
<i>Scalibregma celticum</i>								1					1			
<i>Ditrupa arietina</i>																
<i>Sthenelais cf limicola</i>	1										2					
<i>Labioleanira yhleni</i>																
<i>Sternaspis scutata</i>																
<i>Aonide oxycephala</i>								1								
<i>Laonice cirrata</i>																
<i>Malacoceros fuliginosus</i>																
<i>Prionospio</i> sp.1																
<i>Prionospio</i> sp.2																
<i>Paraprionospio pinnata</i>																3
<i>Spiophanes</i> sp.*																
<i>Exogone cf naidina</i>								1								
<i>Sphaerosyllis histryx</i>																
<i>Syllis alternata</i>								2	1							
<i>Pista cristata</i>							1	6	4			6				
<i>Pista</i> sp.*											2					
<i>Polycirrus</i> sp.*								2				1				
Terebellidae*					1											
<i>Terebellides stroemii</i>								2								
Arthropoda																
<i>Leptocheirus pectinatus</i>																
<i>Ampelisca tenuicornis</i>																
<i>Ampelisca brevicornis</i>																
<i>Ampelisca</i> sp.*								1				1	1	1		
<i>Atylus vedlomensis</i>					1	2										
<i>Medicorophium runcicorne</i>								1								
<i>Tritaeta gibbosa</i> *****						1	2									
<i>Erichthonius punctatus</i>																
<i>Jassa marmorata</i>																
<i>Leucothoe lilljeborgi</i>								1								
<i>Maera grossimana</i> *****																
<i>Monoculodes cf acutipes</i>							1					1				
<i>Perioculodes longimanus</i>																
<i>Harpinia dellavallei</i>																
<i>Urothoe elegans</i>												1				
<i>Atelecyclus rotundatus</i>																
<i>Paguristes eremita</i> *****						1										
<i>Ethusa mascarone</i>																
<i>Goneplax rhomboides</i>																
<i>Ebalia</i> sp.*												1				
<i>Anapagurus</i> sp.*												1				
Penaeidae*														1		
<i>Xantho pilipes</i>																

Taxa	KAVALA GULF MAY'15															
	KAV 10.4	KAV 10.5	KAV 11.1	KAV 11.2	KAV 11.3	KAV 11.4	KAV 11.5	KAV 12.1	KAV 12.2	KAV 12.3	KAV 12.4	KAV 12.5	KAV 13.1	KAV 13.2	KAV 13.3	KAV 13.4
<i>Upogebia larvae</i>																
<i>Natatolana neglecta</i>											2					
<i>Gnathia dentata</i>																
<i>Kupellonura mediterranea</i>																
<i>Apseudopsis</i> sp.**											2	3				
<i>Apseudes talpa</i>																
<i>Leptochelia savignyi</i>																
Mollusca																
<i>Arcidae</i> juv.																
<i>Digitaria digitaria</i>																
<i>Papillicardium papillosum</i>								1			1	4				
<i>Corbula gibba</i>	1						1	11	3	1	15	18				2
<i>Hiatella arctica</i>								1								
<i>Limaria loscombi</i>						1										
<i>Myrtea spinifera</i>					1				1	1	1					
<i>Loripes lucinalis</i>																
<i>Lucinidae</i> juv sp.2											1					
<i>Tellimya ferruginosa</i>																
<i>Mytilus galloprovincialis</i>																
<i>Nucula</i> juv.																
<i>Phaxas</i> cf <i>pellucidus</i>									2							
<i>Abra alba</i>											3	2				
<i>Abra nitida</i>																
<i>Solemya togata</i>																
<i>Arcopagia balaustina</i>				1												
<i>Moerella</i> (tellina) <i>distorta</i>																
<i>Moerella</i> (tellina) cf <i>donacina</i>						1	1	1								1
<i>Tellina serrata</i>										1						
<i>Tellina</i> juv.												2				
<i>Thracia</i> juv.																
<i>Thyasira flexuosa</i>																
<i>Clausinella brongniartii</i> ***	1															
<i>Pitar rudis</i>																
<i>Timoclea ovata</i>							1	2	2		1	2				
<i>Caecum</i> cf <i>trachea</i>																
<i>Calyptraea chinensis</i>																
<i>Capulus ungaricus</i>																
<i>Emarginula rosea</i>																
<i>Euspira</i> cf <i>pulchella</i>								2								
<i>Leptochitonidae</i> juv.																
<i>Acanthochitona</i> juv.										1						
<i>Antalis novemcostata</i> ****																
Echinodermata																
<i>Amphiura filiformis</i>							1									
<i>Amphiura chiajei</i>	4	1							3		2					
<i>Amphiphopils squamata</i>																
<i>Ophiura ophiura</i>																
<i>Ophiuroidea</i> sp.																
<i>Ophiocten affinis</i>			1										1		1	
<i>Cidaris cidaris</i>																
<i>Echinocyamus pusillus</i>									1							
Sipuncula																

Taxa	KAVALA GULF MAY'15															
	KAV 10.4	KAV 10.5	KAV 11.1	KAV 11.2	KAV 11.3	KAV 11.4	KAV 11.5	KAV 12.1	KAV 12.2	KAV 12.3	KAV 12.4	KAV 12.5	KAV 13.1	KAV 13.2	KAV 13.3	KAV 13.4
<i>Aspidosiphon muelleri</i>	1															
<i>Phascolosoma</i> sp.																
<i>Onchnosoma steenstrupii</i>																
Golfingiiformes sp.2 ^{6*}																
Chordata																
Ascidacea sp.1*																
Ascidacea juv sp.2						110										
<i>Branchiostoma lanceolatum</i>																
Porifera																
<i>Suberites domuncula</i> *****						1										
Miscellanea																
Echiura ⁷																
Phoronida		1														
Nematoda	1			1				4	2							
Nemertea								2	1		1	2				
Nº Specimens	22	10	11	14	12	122	18	58	32	11	51	63	7	3	2	11
Nº Taxa	15	7	8	8	8	11	14	24	19	10	21	21	6	3	2	5

Taxa	KAVALA GULF MAY'15											TOTAL
	KAV 13.5	KAV 14.1	KAV 14.2	KAV 14.3	KAV 14.4	KAV 14.5	KAV 15.1	KAV 15.2	KAV 15.3	KAV 15.4	KAV 15.5	
Annelida												
<i>Ampharete cf lindstroemi</i>												2
<i>Amphicteis gunneri</i>												1
<i>Laetmonice (Hermione) hystrix</i>												1
<i>Notomastus latericeus</i>				1				1			3	12
<i>Aphelochaeta marioni</i>										1		5
<i>Chaetozone cf gibber</i>									1			4
<i>Chaetozone sp.</i>												1
Cirratulidae*												4
<i>Monticellina dorsobranchialis</i>											1	2
<i>Cossura coasta</i>												1
Chrysopetalidae sp.				2					1	3		6
<i>Schistomeringos sp.*</i>		1	2					1				6
<i>Eunice vittata</i>			1		1							32
<i>Lysidice ninetta</i>									2			2
<i>Lysidice unicornis</i>				2				1			1	78
<i>Marphysa bellii</i>												56
<i>Pherusa sp.</i>									1			2
<i>Diplocirrus glaucum</i>				1	1	1	1			1	1	5
<i>Glycera sp.</i>	2			1		1						25
<i>Glycera cf celtica</i>										1		2
<i>Glycera rouxi</i>												2
<i>Glycera unicornis</i>												1
<i>Goniada sp.</i>												3
Hesionidae sp.				3					1	1	1	6
<i>Lumbrineris latreilli</i>												10
<i>Lumbrineris sp.</i>		1	1									11
<i>Gallardoneris cf iberica</i>								1				5
<i>Scoletoma impatiens</i>												2
<i>Clymenura sp.</i>												8
<i>Euclymene sp.</i>								1		1	2	27
Maldanidae*												2
<i>Nicomache lumbricalis</i>												1
<i>Praxillella gracilis</i>								2			2	5
<i>Praxillella lophoseta</i>								1				25
<i>Rhodine gracilior</i>												7
<i>Magelona minuta</i>				1								9
<i>Magelona cf wilsoni</i>												4
<i>Nephtys hombergii</i>												1
<i>Nephtys sp.*</i>												1
<i>Drilonereis filum</i>											1	4
<i>Aponuphis bilineata</i>					1		2	1			1	19
<i>Aponuphis cf brementi</i>												1
<i>Aponuphis fauveli</i>					1							48
<i>Apobuphis juv.</i>												1
<i>Ophelina cylindricaudata</i>												1
<i>Owenia fusiformis</i>												2
<i>Paralacydonia paradoxa</i>	1	1								7	1	61
<i>Levinsenia cf demiri</i>												23
<i>Cirrophorus branchiatus</i>												1
Paraonidae sp.3			4	3	2		3	3	5	4		24
<i>Amphictene auricoma</i>												1

Taxa	KAVALA GULF MAY'15											TOTAL
	KAV 13.5	KAV 14.1	KAV 14.2	KAV 14.3	KAV 14.4	KAV 14.5	KAV 15.1	KAV 15.2	KAV 15.3	KAV 15.4	KAV 15.5	
<i>Phyllodoce maculata</i>												1
<i>Phyllodoce</i> sp.*												1
<i>Eteone</i> sp.*									1			2
<i>Eumida</i> sp.*												1
<i>Sigambra tentaculata</i>							1	1				3
<i>Poecilochaetus serpens</i>						2	1					8
<i>Harmothoe</i> sp.*						1						4
<i>Chone filicaudata</i>									1		1	4
<i>Scalibregma celticum</i>												3
<i>Ditrupa arietina</i>												4
<i>Sthenelais cf limicola</i>												4
<i>Labioleanira yhleni</i>												1
<i>Sternaspis scutata</i>												10
<i>Aonide oxycephala</i>											3	4
<i>Laonice cirrata</i>								1				7
<i>Malacoceros fuliginosus</i>												1
<i>Prionospio</i> sp.1												7
<i>Prionospio</i> sp.2												9
<i>Paraprionospio pinnata</i>												11
<i>Spiophanes</i> sp.*												2
<i>Exogone cf naidina</i>												1
<i>Sphaerosyllis histryx</i>												3
<i>Syllis alternata</i>												5
<i>Pista cristata</i>											2	23
<i>Pista</i> sp.*												5
<i>Polycirrus</i> sp.*			1									5
Terebellidae*												1
<i>Terebellides stroemii</i>									2			9
Arthropoda												
<i>Leptocheirus pectinatus</i>												2
<i>Ampelisca tenuicornis</i>												1
<i>Ampelisca brevicornis</i>										6	1	7
<i>Ampelisca</i> sp.*						1						7
<i>Atylus vedlomensis</i>												6
<i>Medicorophium runcicorne</i>												1
<i>Tritaeta gibbosa</i> *****				1								4
<i>Erichthonius punctatus</i>												1
<i>Jassa marmorata</i>				1		1						2
<i>Leucothoe lilljerborgi</i>												1
<i>Maera grossimana</i> *****												2
<i>Monoculodes cf acutipes</i>												2
<i>Perioculodes longimanus</i>												1
<i>Harpinia dellavallei</i>												1
<i>Urothoe elegans</i>												4
<i>Atelecyclus rotundatus</i>	1											1
<i>Paguristes eremita</i> *****												1
<i>Ethusa mascarone</i>												1
<i>Goneplax rhomboides</i>												5
<i>Ebalia</i> sp.*			1									2
<i>Anapagurus</i> sp.*		2						1				4
Penaeidae*												1
<i>Xantho pilipes</i>												1

Taxa	KAVALA GULF MAY'15											TOTAL
	KAV 13.5	KAV 14.1	KAV 14.2	KAV 14.3	KAV 14.4	KAV 14.5	KAV 15.1	KAV 15.2	KAV 15.3	KAV 15.4	KAV 15.5	
<i>Upogebia larvae</i>								1				1
<i>Natatolana neglecta</i>												4
<i>Gnathia dentata</i>									1			1
<i>Kupellonura mediterranea</i>												1
<i>Apseudopsis</i> sp.**												9
<i>Apseudes talpa</i>									1			1
<i>Leptochelia savignyi</i>												1
Mollusca												
<i>Arcidae</i> juv.												1
<i>Digitaria digitaria</i>											1	1
<i>Papillicardium papillosum</i>												17
<i>Corbula gibba</i>						1						86
<i>Hiatella arctica</i>						2	1		2			6
<i>Limaria loscombi</i>												1
<i>Myrtea spinifera</i>				1								23
<i>Loripes lucinalis</i>								2		1		3
<i>Lucinidae</i> juv sp.2												5
<i>Tellimya ferruginosa</i>											1	1
<i>Mytilus galloprovincialis</i>												1
<i>Nucula</i> juv.												5
<i>Phaxas cf pellucidus</i>												7
<i>Abra alba</i>												5
<i>Abra nitida</i>												3
<i>Solemya togata</i>									1		1	3
<i>Arcopagia balaustina</i>												1
<i>Moerella (tellina) distorta</i>												1
<i>Moerella (tellina) cf donacina</i>							1					6
<i>Tellina serrata</i>												1
<i>Tellina</i> juv.												5
<i>Thracia</i> juv.								1				2
<i>Thyasira flexuosa</i>												12
<i>Clausinella brongniartii</i> ***												4
<i>Pitar rudis</i>												3
<i>Timoclea ovata</i>		1		1	1	1		2	1	1	2	38
<i>Caecum cf trachea</i>				1				1				2
<i>Calyptraea chinensis</i>												1
<i>Capulus ungaricus</i>									1			1
<i>Emarginula rosea</i>									1			1
<i>Euspira cf pulchella</i>				1			1		1	1		6
<i>Leptochitonidae</i> juv.				1	1			1	1			4
<i>Acanthochitona</i> juv.												1
<i>Antalis novemcostata</i> ****												2
Echinodermata												
<i>Amphiura filiformis</i>												2
<i>Amphiura chiajei</i>										1		2
<i>Amphiphopils squamata</i>		2		2		1			1	2		28
<i>Ophiura ophiura</i>						1				1		2
<i>Ophiuroidea</i> sp.							1					1
<i>Ophiocten affinis</i>												5
<i>Cidaris cidaris</i>										1		1
<i>Echinocyamus pusillus</i>		1									2	4
Sipuncula												

Taxa	KAVALA GULF MAY'15											TOTAL
	KAV 13.5	KAV 14.1	KAV 14.2	KAV 14.3	KAV 14.4	KAV 14.5	KAV 15.1	KAV 15.2	KAV 15.3	KAV 15.4	KAV 15.5	
<i>Aspidosiphon muelleri</i>		1										11
<i>Phascolosoma</i> sp.					1							2
<i>Onchnosoma steenstrupii</i>												5
Golfingiiformes sp.2 ⁶⁺												2
Chordata												
Asciadiacea sp.1*												1
Asciadiacea juv sp.2												110
<i>Branchiostoma lanceolatum</i>							1					1
Porifera												
<i>Suberites domuncula</i> *****												1
Miscellanea												
Echiura ⁷												2
Phoronida												11
Nematoda		5		11				4	5		4	53
Nemertea				2				1				19
Nº Specimens	4	15	10	36	9	12	13	28	31	33	32	1300
Nº Taxa	3	9	6	18	8	10	10	20	20	16	20	163

Taxa	KAVALA GULF MAY'15					TOTAL
	KAV 1.1	KAV 1.2	KAV 1.3	KAV 1.4	KAV 1.5	
Annelida						
<i>Ampharete cf lindstroemi</i>		2				2
<i>Amphicteis gunneri</i>						0
<i>Laetmonice (Hermione) hystrix</i>						0
<i>Notomastus latericeus</i>						0
<i>Aphelochaeta marioni</i>						0
<i>Chaetozone cf gibber</i>						0
<i>Chaetozone sp.</i>						0
Cirratulidae*						0
<i>Monticellina dorsobranchialis</i>						0
<i>Cossura coasta</i>						0
<i>Schistomeringos sp.*</i>						0
<i>Eunice vittata</i>	1	1		1		3
<i>Lysidice unicornis</i>	1	1	1			3
<i>Marphysa bellii</i>	1	1	1	1		4
<i>Pherusa sp.</i>						0
<i>Glycera sp.</i>	1	1	2			4
<i>Glycera cf celtica</i>						0
<i>Glycera rouxi</i>						0
<i>Glycera unicornis</i>						0
<i>Goniada sp.</i>						0
<i>Lumbrineris latreilli</i>	1					1
<i>Lumbrineris sp.</i>						0
<i>Gallardonis cf iberica</i>						0
<i>Scoletoma impatiens</i>						0
<i>Clymenura sp.</i>						0
<i>Euclymene sp.</i>	1					1
Maldanidae*						0
<i>Nicomache lumbricalis</i>						0
<i>Praxillella gracilis</i>						0
<i>Praxillella lophoseta</i>						0
<i>Rhodine gracilior</i>						0
<i>Magelona minuta</i>					1	1
<i>Magelona cf wilsoni</i>						0
<i>Nephtys hombergii</i>						0
<i>Nephtys sp.*</i>						0
<i>Drilonereis filum</i>						0
<i>Aponuphis bilineata</i>						0
<i>Aponuphis cf brementi</i>						0
<i>Aponuphis fauveli</i>						0
<i>Apobuphis juv.</i>						0
<i>Ophelina cylindrica</i>						0
<i>Owenia fusiformis</i>						0
<i>Paralacydonia paradoxa</i>		1				1
<i>Levinsenia cf demiri</i>						0
<i>Cirrophorus branchiatus</i>						0
<i>Amphictene auricoma</i>						0
<i>Phyllodoce maculata</i>						0
<i>Phyllodoce sp.*</i>						0
<i>Eteone sp.*</i>						0
<i>Eumida sp.*</i>						0
<i>Sigambra tentaculata</i>						0
<i>Poecilochaetus serpens</i>	1	1				2
<i>Harmothoe sp.*</i>						0
<i>Chone filicaudata</i>		2				2
<i>Scalibregma celticum</i>						0

Taxa	KAVALA GULF MAY'15					TOTAL
	KAV 1.1	KAV 1.2	KAV 1.3	KAV 1.4	KAV 1.5	
<i>Ditrupa arietina</i>						0
<i>Sthenelais cf limicola</i>	1					1
<i>Labioleanira yhleni</i>						0
<i>Sternaspis scutata</i>						0
<i>Aonide oxycephala</i>						0
<i>Laonice cirrata</i>						0
<i>Malacoceros fuliginosus</i>				1		1
<i>Prionospio sp.1</i>	2					2
<i>Prionospio sp.2</i>		1				1
<i>Paraprionospio pinnata</i>						0
<i>Spiophanes sp.*</i>						0
<i>Exogone cf naidina</i>						0
<i>Sphaerosyllis histrix</i>		1				1
<i>Syllis alternata</i>						0
<i>Pista cristata</i>						0
<i>Pista sp.*</i>						0
<i>Polycirrus sp.*</i>						0
Terebellidae*						0
<i>Terebellides stroemii</i>		1				1
Arthropoda						
<i>Leptocheirus pectinatus</i>				1		1
<i>Ampelisca tenuicornis</i>						0
<i>Ampelisca sp.*</i>						0
<i>Atylus vedlomensis</i>						0
<i>Medicorophium runcicorne</i>						0
<i>Tritaeta gibbosa*****</i>						0
<i>Ericthonius punctatus</i>						0
<i>Leucothoe lilljeborgi</i>						0
<i>Maera grossimana*****</i>						0
<i>Monoculodes cf acutipes</i>						0
<i>Periculodes longimanus</i>					1	1
<i>Harpinia dellavallei</i>						0
<i>Urothoe elegans</i>						0
<i>Atelecyclus rotundatus</i>						0
<i>Paguristes eremita*****</i>						0
<i>Ethusa mascarone</i>						0
<i>Goneplax rhomboides</i>						0
<i>Ebalia sp.*</i>						0
<i>Anapagurus sp.*</i>						0
Penaeidae*						0
<i>Xantho pilipes</i>						0
<i>Natatolana neglecta</i>					1	1
<i>Kupellonura mediterranea</i>						0
<i>Apseudopsis sp.**</i>						0
<i>Leptochelia savignyi</i>						0
Mollusca						
Arcidae juv.						0
<i>Papillicardium papillosum</i>						0
<i>Corbula gibba</i>		1				1
<i>Hiatella arctica</i>						0
<i>Limaria loscombi</i>						0
<i>Myrtea spinifera</i>	1					1
<i>Lucinidae juv sp.2</i>						0
<i>Mytilus galloprovincialis</i>						0
<i>Nucula juv.</i>						0
<i>Phaxas cf pellucidus</i>	2					2

Taxa	KAVALA GULF MAY'15					TOTAL
	KAV 1.1	KAV 1.2	KAV 1.3	KAV 1.4	KAV 1.5	
<i>Abra alba</i>						0
<i>Abra nitida</i>						0
<i>Solemya togata</i>						0
<i>Arcopagia balaustina</i>						0
<i>Moerella (tellina) distorta</i>						0
<i>Moerella (tellina) cf donacina</i>						0
<i>Tellina serrata</i>						0
<i>Tellina juv.</i>		1				1
<i>Thracia juv.</i>						0
<i>Thyasira flexuosa</i>		1				1
<i>Clausinella brongniartii</i> ***			1		1	2
<i>Pitar rudis</i>						0
<i>Timoclea ovata</i>	1	2		1	1	5
<i>Calyptrea chinensis</i>						0
<i>Euspira cf pulchella</i>						0
<i>Acanthochitona juv.</i>						0
<i>Antalis novemcostata</i> ****						0
Echinodermata						
<i>Amphiura filiformis</i>						0
<i>Amphiura chiajei</i>						0
<i>Amphipholis squamata</i>						0
<i>Ophiocten affinis</i>				2		2
<i>Echinocyamus pusillus</i>						0
Sipuncula						
<i>Aspidosiphon muelleri</i>						0
<i>Phascolosoma sp.</i>						0
<i>Onchnosoma steenstrupii</i>					2	2
<i>Golfingiiformes sp.2</i> ^{6†}						0
Chordata						
Ascidacea sp.1*						0
Ascidacea juv sp.2						0
Porifera						
<i>Suberites domuncula</i> *****						0
Miscellanea						
Echiura ^{7†}						0
Phoronida						0
Nematoda	1	2			4	7
Nemertea					1	1
Nº Specimens	15	20	5	7	12	59
Nº Taxa	13	16	4	6	8	31

Taxa	KAVALA GULF MAY'15					TOTAL
	KAV 2.1	KAV 2.2	KAV 2.3	KAV 2.4	KAV 2.5	
Annelida						
<i>Ampharete cf lindstroemi</i>						0
<i>Amphicteis gunneri</i>						0
<i>Laetmonice (Hermione) hystrix</i>						0
<i>Notomastus latericeus</i>						0
<i>Aphelochaeta marioni</i>						0
<i>Chaetozone cf gibber</i>						0
<i>Chaetozone sp.</i>						0
<i>Cirratulidae*</i>						0
<i>Monticellina dorsobranchialis</i>						0
<i>Cossura coasta</i>						0
<i>Schistomeringos sp.*</i>						0
<i>Eunice vittata</i>						0
<i>Lysidice unicornis</i>	1					1
<i>Marphysa bellii</i>						0
<i>Pherusa sp.</i>						0
<i>Glycera sp.</i>						0
<i>Glycera cf celtica</i>						0
<i>Glycera rouxi</i>			1			1
<i>Glycera unicornis</i>						0
<i>Goniada sp.</i>						0
<i>Lumbrineris latreilli</i>						0
<i>Lumbrineris sp.</i>						0
<i>Gallardoneris cf iberica</i>						0
<i>Scoletoma impatiens</i>						0
<i>Clymenura sp.</i>						0
<i>Euclymene sp.</i>						0
<i>Maldanidae*</i>						0
<i>Nicomache lumbricalis</i>						0
<i>Praxillella gracilis</i>						0
<i>Praxillella lophoseta</i>						0
<i>Rhodine gracilior</i>						0
<i>Magelona minuta</i>						0
<i>Magelona cf wilsoni</i>						0
<i>Nephtys hombergii</i>						0
<i>Nephtys sp.*</i>						0
<i>Drilonereis filum</i>						0
<i>Aponuphis bilineata</i>						0
<i>Aponuphis cf brementi</i>						0
<i>Aponuphis fauveli</i>		1				1
<i>Apobuphis juv.</i>						0
<i>Ophelina cylindricaudata</i>						0
<i>Owenia fusiformis</i>						0
<i>Paralacydonia paradoxa</i>						0
<i>Levinsenia cf demiri</i>				4		4
<i>Cirrophorus branchiatus</i>						0
<i>Amphictene auricoma</i>						0
<i>Phyllodoce maculata</i>						0
<i>Phyllodoce sp.*</i>						0
<i>Eteone sp.*</i>						0
<i>Eumida sp.*</i>						0
<i>Sigambra tentaculata</i>						0
<i>Poecilochaetus serpens</i>						0
<i>Harmothoe sp.*</i>						0
<i>Chone filicaudata</i>						0
<i>Scalibregma celticum</i>						0
<i>Ditrupa arietina</i>						0
<i>Sthenelais cf limicola</i>						0
<i>Labioleanira yhleni</i>						0
<i>Sternaspis scutata</i>	2	1				3
<i>Aonide oxycephala</i>						0
<i>Laonice cirrata</i>						0

Taxa	KAVALA GULF MAY'15					TOTAL
	KAV 2.1	KAV 2.2	KAV 2.3	KAV 2.4	KAV 2.5	
<i>Malacoceros fuliginosus</i>						0
<i>Prionospio</i> sp.1						0
<i>Prionospio</i> sp.2						0
<i>Paraprionospio pinnata</i>						0
<i>Spiophanes</i> sp.*						0
<i>Exogone</i> cf <i>naidina</i>						0
<i>Sphaerosyllis histryx</i>						0
<i>Syllis alternata</i>						0
<i>Pista cristata</i>						0
<i>Pista</i> sp.*						0
<i>Polycirrus</i> sp.*						0
Terebellidae*						0
<i>Terebellides stroemii</i>						0
Arthropoda						
<i>Leptocheirus pectinatus</i>						0
<i>Ampelisca tenuicornis</i>						0
<i>Ampelisca</i> sp.*						0
<i>Atylus vedlomensis</i>						0
<i>Medicorophium runcicorne</i>						0
<i>Tritaeta gibbosa</i> *****						0
<i>Ericthonius punctatus</i>						0
<i>Leucothoe lilljeborgi</i>						0
<i>Maera grossimana</i> *****						0
<i>Monoculodes</i> cf <i>acutipes</i>						0
<i>Perioculodes longimanus</i>						0
<i>Harpinia dellavallei</i>						0
<i>Urothoe elegans</i>						0
<i>Atelecyclus rotundatus</i>						0
<i>Paguristes eremita</i> *****						0
<i>Ethusa mascarone</i>						0
<i>Goneplax rhomboides</i>						0
<i>Ebalia</i> sp.*						0
<i>Anapagurus</i> sp.*						0
Penaeidae*						0
<i>Xantho pilipes</i>						0
<i>Natatolana neglecta</i>						0
<i>Kupellonura mediterranea</i>						0
<i>Apseudopsis</i> sp.**						0
<i>Leptocheilia savignyi</i>						0
Mollusca						
<i>Arcidae</i> juv.						0
<i>Papillicardium papillosum</i>						0
<i>Corbula gibba</i>						0
<i>Hiatella arctica</i>						0
<i>Limaria loscombi</i>						0
<i>Myrtea spinifera</i>						0
<i>Lucinidae</i> juv sp.2						0
<i>Mytilus galloprovincialis</i>						0
<i>Nucula</i> juv.						0
<i>Phaxas</i> cf <i>pellucidus</i>						0
<i>Abra alba</i>						0
<i>Abra nitida</i>						0
<i>Solemya togata</i>						0
<i>Arcopagia balaustina</i>						0
<i>Moerella (tellina) distorta</i>						0
<i>Moerella (tellina) cf donacina</i>						0
<i>Tellina serrata</i>						0
<i>Tellina</i> juv.						0
<i>Thracia</i> juv.						0
<i>Thyasira flexuosa</i>						0
<i>Clausinella brongniartii</i> ***						0
<i>Pitar rudis</i>						0

Taxa	KAVALA GULF MAY'15					TOTAL
	KAV 2.1	KAV 2.2	KAV 2.3	KAV 2.4	KAV 2.5	
<i>Timoclea ovata</i>						0
<i>Calyptrea chinensis</i>						0
<i>Euspira cf pulchella</i>						0
<i>Acanthochitona juv.</i>						0
<i>Antalis novemcostata</i> ****						0
Echinodermata						
<i>Amphiura filiformis</i>						0
<i>Amphiura chiajei</i>						0
<i>Amphipropis squamata</i>						0
<i>Ophiocten affinis</i>						0
<i>Echinocyamus pusillus</i>						0
Sipuncula						
<i>Aspidosiphon muelleri</i>						0
<i>Phascolosoma sp.</i>						0
<i>Onchnosoma steenstrupii</i>						0
Golfingiiformes sp.2 ^{6*}						0
Chordata						
Asciacea sp.1*						0
Asciacea juv sp.2						0
Porifera						
<i>Suberites domuncula</i> *****						0
Miscellanea						
Echiura ^{7*}						0
Phoronida						0
Nematoda						0
Nemertea						0
Nº Specimens	3	2	1	4	0	10
Nº Taxa	2	2	1	1	0	5

Taxa	KAVALA GULF MAY'15					TOTAL
	KAV 3.1	KAV 3.2	KAV 3.3	KAV 3.4	KAV 3.5	
Annelida						
<i>Ampharete cf lindstroemi</i>						0
<i>Amphicteis gunneri</i>						0
<i>Laetmonice (Hermione) hystrix</i>						0
<i>Notomastus latericeus</i>						0
<i>Aphelochaeta marioni</i>						0
<i>Chaetozone cf gibber</i>						0
<i>Chaetozone sp.</i>						0
<i>Cirratulidae*</i>						0
<i>Monticellina dorsobranchialis</i>						0
<i>Cossura coasta</i>						0
<i>Schistomeringos sp.*</i>						0
<i>Eunice vittata</i>						0
<i>Lysidice unicornis</i>						0
<i>Marphysa bellii</i>						0
<i>Pherusa sp.</i>						0
<i>Glycera sp.</i>						0
<i>Glycera cf celtica</i>						0
<i>Glycera rouxi</i>						0
<i>Glycera unicornis</i>						0
<i>Goniada sp.</i>						0
<i>Lumbrineris latreilli</i>						0
<i>Lumbrineris sp.</i>						0
<i>Gallardoneris cf iberica</i>	1					1
<i>Scoletoma impatiens</i>						0
<i>Clymenura sp.</i>						0
<i>Euclymene sp.</i>						0
<i>Maldanidae*</i>						0
<i>Nicomache lumbricalis</i>						0
<i>Praxillella gracilis</i>						0
<i>Praxillella lophoseta</i>						0
<i>Rhodine gracilior</i>						0
<i>Magelona minuta</i>						0
<i>Magelona cf wilsoni</i>						0
<i>Nephtys hombergii</i>						0
<i>Nephtys sp.*</i>						0
<i>Drilonereis filum</i>						0
<i>Aponuphis bilineata</i>						0
<i>Aponuphis cf brementi</i>						0
<i>Aponuphis fauveli</i>						0
<i>Apobuphis juv.</i>						0
<i>Ophelina cylindrica</i>						0
<i>Owenia fusiformis</i>						0
<i>Paralacydonia paradoxa</i>		1				1
<i>Levinsenia cf demiri</i>	6	2	1	3	2	14
<i>Cirrophorus branchiatus</i>						0
<i>Amphictene auricoma</i>						0
<i>Phyllodoce maculata</i>						0
<i>Phyllodoce sp.*</i>						0
<i>Eteone sp.*</i>						0
<i>Eumida sp.*</i>						0
<i>Sigambra tentaculata</i>						0
<i>Poecilochaetus serpens</i>						0
<i>Harmothoe sp.*</i>						0
<i>Chone filicaudata</i>						0
<i>Scalibregma celticum</i>						0

Taxa	KAVALA GULF MAY'15					TOTAL
	KAV 3.1	KAV 3.2	KAV 3.3	KAV 3.4	KAV 3.5	
<i>Ditrupa arietina</i>						0
<i>Sthenelais cf limicola</i>						0
<i>Labioleanira yhleni</i>					1	1
<i>Sternaspis scutata</i>	1	1				2
<i>Aonide oxycephala</i>						0
<i>Laonice cirrata</i>						0
<i>Malacoceros fuliginosus</i>						0
<i>Prionospio sp.1</i>			2	1		3
<i>Prionospio sp.2</i>			1	2	1	4
<i>Paraprionospio pinnata</i>						0
<i>Spiophanes sp.*</i>						0
<i>Exogone cf naidina</i>						0
<i>Sphaerosyllis histrix</i>						0
<i>Syllis alternata</i>						0
<i>Pista cristata</i>						0
<i>Pista sp.*</i>						0
<i>Polycirrus sp.*</i>						0
Terebellidae*						0
<i>Terebellides stroemii</i>						0
Arthropoda						
<i>Leptocheirus pectinatus</i>						0
<i>Ampelisca tenuicornis</i>						0
<i>Ampelisca sp.*</i>					1	1
<i>Atylus vedlomensis</i>						0
<i>Medicorophium runcicorne</i>						0
<i>Tritaeta gibbosa*****</i>						0
<i>Erichthonius punctatus</i>						0
<i>Leucothoe lilljeborgi</i>						0
<i>Maera grossimana*****</i>						0
<i>Monoculodes cf acutipes</i>						0
<i>Periculodes longimanus</i>						0
<i>Harpinia dellavallei</i>						0
<i>Urothoe elegans</i>						0
<i>Atelecyclus rotundatus</i>						0
<i>Paguristes eremita*****</i>						0
<i>Ethusa mascarone</i>						0
<i>Goneplax rhomboides</i>		1		1		2
<i>Ebalia sp.*</i>						0
<i>Anapagurus sp.*</i>						0
Penaeidae*						0
<i>Xantho pilipes</i>						0
<i>Natatolana neglecta</i>						0
<i>Kupellonura mediterranea</i>						0
<i>Apseudopsis sp.**</i>						0
<i>Leptochelia savignyi</i>						0
Mollusca						
<i>Arcidae juv.</i>						0
<i>Papillicardium papillosum</i>						0
<i>Corbula gibba</i>						0
<i>Hiatella arctica</i>						0
<i>Limaria loscombi</i>						0
<i>Myrtea spinifera</i>						0
<i>Lucinidae juv sp.2</i>						0
<i>Mytilus galloprovincialis</i>						0
<i>Nucula juv.</i>						0
<i>Phaxas cf pellucidus</i>						0

Taxa	KAVALA GULF MAY'15					TOTAL
	KAV 3.1	KAV 3.2	KAV 3.3	KAV 3.4	KAV 3.5	
<i>Abra alba</i>						0
<i>Abra nitida</i>					1	1
<i>Solemya togata</i>						0
<i>Arcopagia balaustina</i>						0
<i>Moerella (tellina) distorta</i>						0
<i>Moerella (tellina) cf donacina</i>						0
<i>Tellina serrata</i>						0
<i>Tellina juv.</i>						0
<i>Thracia juv.</i>						0
<i>Thyasira flexuosa</i>						0
<i>Clausinella brongniartii</i> ***						0
<i>Pitar rudis</i>						0
<i>Timoclea ovata</i>						0
<i>Calyptrea chinensis</i>						0
<i>Euspira cf pulchella</i>						0
<i>Acanthochitona juv.</i>						0
<i>Antalis novemcostata</i> ****						0
Echinodermata						
<i>Amphiura filiformis</i>						0
<i>Amphiura chiajei</i>						0
<i>Amphipholis squamata</i>						0
<i>Ophiocten affinis</i>						0
<i>Echinocyamus pusillus</i>						0
Sipuncula						
<i>Aspidosiphon muelleri</i>						0
<i>Phascolosoma sp.</i>						0
<i>Onchnosoma steenstrupii</i>						0
<i>Golfingiiformes sp.2</i> ^{6†}						0
Chordata						
Ascidacea sp.1*						0
Ascidacea juv sp.2						0
Porifera						
<i>Suberites domuncula</i> *****						0
Miscellanea						
<i>Echiura</i> ^{7†}						0
Phoronida						0
Nematoda						0
Nemertea						0
Nº Specimens	8	5	4	7	6	30
Nº Taxa	3	4	3	4	5	10

Taxa	KAVALA GULF MAY'15					TOTAL
	KAV 4.1	KAV 4.2	KAV 4.3	KAV 4.4	KAV 4.5	
Annelida						
<i>Ampharete cf lindstroemi</i>						0
<i>Amphicteis gunneri</i>						0
<i>Laetmonice (Hermione) hystrix</i>						0
<i>Notomastus latericeus</i>					1	1
<i>Aphelochaeta marioni</i>	2					2
<i>Chaetozone cf gibber</i>						0
<i>Chaetozone sp.</i>						0
Cirratulidae*						0
<i>Monticellina dorsobranchialis</i>						0
<i>Cossura coasta</i>			1			1
<i>Schistomeringos sp.*</i>						0
<i>Eunice vittata</i>						0
<i>Lysidice unicornis</i>						0
<i>Marphysa bellii</i>						0
<i>Pherusa sp.</i>						0
<i>Glycera sp.</i>		1				1
<i>Glycera cf celtica</i>						0
<i>Glycera rouxi</i>						0
<i>Glycera unicornis</i>						0
<i>Goniada sp.</i>						0
<i>Lumbrineris latreilli</i>						0
<i>Lumbrineris sp.</i>						0
<i>Gallardonis cf iberica</i>					1	1
<i>Scoletoma impatiens</i>						0
<i>Clymenura sp.</i>						0
<i>Euclymene sp.</i>					1	1
Maldanidae*						0
<i>Nicomache lumbricalis</i>						0
<i>Praxillella gracilis</i>						0
<i>Praxillella lophoseta</i>						0
<i>Rhodine gracillior</i>	2	1	3			6
<i>Magelona minuta</i>			1			1
<i>Magelona cf wilsoni</i>						0
<i>Nephtys hombergii</i>						0
<i>Nephtys sp.*</i>						0
<i>Drilonereis filum</i>						0
<i>Aponuphis bilineata</i>						0
<i>Aponuphis cf brementi</i>						0
<i>Aponuphis fauveli</i>	1			1	3	5
<i>Apobuphis juv.</i>		1				1
<i>Ophelina cylindrica</i>	1					1
<i>Owenia fusiformis</i>						0
<i>Paralacydonia paradoxa</i>	1	1	1		1	4
<i>Levinsenia cf demiri</i>	1	1	2			4
<i>Cirrophorus branchiatus</i>						0
<i>Amphictene auricoma</i>						0
<i>Phyllodoce maculata</i>						0
<i>Phyllodoce sp.*</i>						0
<i>Eteone sp.*</i>						0
<i>Eumida sp.*</i>						0
<i>Sigambra tentaculata</i>						0
<i>Poecilochaetus serpens</i>						0
<i>Harmothoe sp.*</i>						0
<i>Chone filicaudata</i>						0
<i>Scalibregma celticum</i>						0

Taxa	KAVALA GULF MAY'15					TOTAL
	KAV 4.1	KAV 4.2	KAV 4.3	KAV 4.4	KAV 4.5	
<i>Ditrupa arietina</i>						0
<i>Sthenelais cf limicola</i>						0
<i>Labioleanira yhleni</i>						0
<i>Sternaspis scutata</i>				1		1
<i>Aonide oxycephala</i>						0
<i>Laonice cirrata</i>			1			1
<i>Malacoceros fuliginosus</i>						0
<i>Prionospio sp.1</i>			2			2
<i>Prionospio sp.2</i>	1	3				4
<i>Paraprionospio pinnata</i>	2	3			2	7
<i>Spiophanes sp.*</i>						0
<i>Exogone cf naidina</i>						0
<i>Sphaerosyllis histrix</i>						0
<i>Syllis alternata</i>						0
<i>Pista cristata</i>						0
<i>Pista sp.*</i>						0
<i>Polycirrus sp.*</i>						0
Terebellidae*						0
<i>Terebellides stroemii</i>	1			1		2
Arthropoda						
<i>Leptocheirus pectinatus</i>						0
<i>Ampelisca tenuicornis</i>						0
<i>Ampelisca sp.*</i>						0
<i>Atylus vedlomensis</i>						0
<i>Medicorophium runcicorne</i>						0
<i>Tritaeta gibbosa*****</i>						0
<i>Erichthonius punctatus</i>						0
<i>Leucothoe lilljeborgi</i>						0
<i>Maera grossimana*****</i>						0
<i>Monoculodes cf acutipes</i>						0
<i>Periculodes longimanus</i>						0
<i>Harpinia dellavallei</i>						0
<i>Urothoe elegans</i>						0
<i>Atelecyclus rotundatus</i>						0
<i>Paguristes eremita*****</i>						0
<i>Ethusa mascarone</i>						0
<i>Goneplax rhomboides</i>	1			1		2
<i>Ebalia sp.*</i>						0
<i>Anapagurus sp.*</i>						0
Penaeidae*						0
<i>Xantho pilipes</i>						0
<i>Natatolana neglecta</i>						0
<i>Kupellonura mediterranea</i>						0
<i>Apseudopsis sp.**</i>						0
<i>Leptochelia savignyi</i>						0
Mollusca						
<i>Arcidae juv.</i>						0
<i>Papillicardium papillosum</i>						0
<i>Corbula gibba</i>						0
<i>Hiatella arctica</i>						0
<i>Limaria loscombi</i>						0
<i>Myrtea spinifera</i>		2				2
<i>Lucinidae juv sp.2</i>						0
<i>Mytilus galloprovincialis</i>						0
<i>Nucula juv.</i>						0
<i>Phaxas cf pellucidus</i>						0

Taxa	KAVALA GULF MAY'15					TOTAL
	KAV 4.1	KAV 4.2	KAV 4.3	KAV 4.4	KAV 4.5	
<i>Abra alba</i>						0
<i>Abra nitida</i>						0
<i>Solemya togata</i>						0
<i>Arcopagia balaustina</i>						0
<i>Moerella (tellina) distorta</i>						0
<i>Moerella (tellina) cf donacina</i>						0
<i>Tellina serrata</i>						0
<i>Tellina juv.</i>						0
<i>Thracia juv.</i>						0
<i>Thyasira flexuosa</i>		1				1
<i>Clausinella brongiartii</i> ***						0
<i>Pitar rudis</i>						0
<i>Timoclea ovata</i>		2				2
<i>Calyptrea chinensis</i>						0
<i>Euspira cf pulchella</i>						0
<i>Acanthochitona juv.</i>						0
<i>Antalis novemcostata</i> ****						0
Echinodermata						
<i>Amphiura filiformis</i>						0
<i>Amphiura chiajei</i>						0
<i>Amphipholis squamata</i>						0
<i>Ophiocten affinis</i>						0
<i>Echinocyamus pusillus</i>						0
Sipuncula						
<i>Aspidosiphon muelleri</i>						0
<i>Phascolosoma sp.</i>						0
<i>Onchnosoma steenstrupii</i>			1			1
<i>Golfingiiformes sp.2</i> ^{6†}						0
Chordata						
Ascidacea sp.1*						0
Ascidacea juv sp.2						0
Porifera						
<i>Suberites domuncula</i> *****						0
Miscellanea						
Echiura ^{7†}						0
Phoronida						0
Nematoda		1	1			2
Nemertea		2				2
Nº Specimens	13	19	13	4	9	58
Nº Taxa	10	12	9	4	6	26

Taxa	KAVALA GULF MAY'15					TOTAL
	KAV 5.1	KAV 5.2	KAV 5.3	KAV 5.4	KAV 5.5	
Annelida						
<i>Ampharete cf lindstroemi</i>						0
<i>Amphicteis gunneri</i>					1	1
<i>Laetmonice (Hermione) hystrix</i>						0
<i>Notomastus latericeus</i>						0
<i>Aphelochaeta marioni</i>						0
<i>Chaetozone cf gibber</i>						0
<i>Chaetozone sp.</i>						0
<i>Cirratulidae*</i>						0
<i>Monticellina dorsobranchialis</i>						0
<i>Cossura coasta</i>						0
<i>Schistomeringos sp.*</i>						0
<i>Eunice vittata</i>	2	1	2	1		6
<i>Lysidice unicornis</i>	2	1		1	1	5
<i>Marphysa bellii</i>	2	1		1	1	5
<i>Pherusa sp.</i>						0
<i>Glycera sp.</i>					1	1
<i>Glycera cf celtica</i>						0
<i>Glycera rouxi</i>						0
<i>Glycera unicornis</i>						0
<i>Goniada sp.</i>						0
<i>Lumbrineris latreilli</i>			2	1	1	4
<i>Lumbrineris sp.</i>		1				1
<i>Gallardonensis cf iberica</i>						0
<i>Scoletoma impatiens</i>		2				2
<i>Clymenura sp.</i>						0
<i>Euclymene sp.</i>						0
<i>Maldanidae*</i>						0
<i>Nicomache lumbricalis</i>					1	1
<i>Praxillella gracilis</i>						0
<i>Praxillella lophoseta</i>						0
<i>Rhodine gracilior</i>						0
<i>Magelona minuta</i>						0
<i>Magelona cf wilsoni</i>						0
<i>Nephtys hombergii</i>						0
<i>Nephtys sp.*</i>						0
<i>Drilonereis filum</i>		1				1
<i>Aponuphis bilineata</i>			1	1	1	3
<i>Aponuphis cf brementi</i>						0
<i>Aponuphis fauveli</i>			3	4	2	9
<i>Apobuphis juv.</i>						0
<i>Ophelina cylindrica data</i>						0
<i>Owenia fusiformis</i>						0
<i>Paralacydonia paradoxa</i>		2	2	1	2	7
<i>Levinsenia cf demiri</i>						0
<i>Cirrophorus branchiatus</i>					1	1
<i>Amphictene auricoma</i>						0
<i>Phyllodoce maculata</i>						0
<i>Phyllodoce sp.*</i>			1			1
<i>Eteone sp.*</i>						0
<i>Eumida sp.*</i>				1		1
<i>Sigambra tentaculata</i>						0
<i>Poecilochaetus serpens</i>						0
<i>Harmothoe sp.*</i>						0
<i>Chone filicaudata</i>						0
<i>Scalibregma celticum</i>						0

Taxa	KAVALA GULF MAY'15					TOTAL
	KAV 5.1	KAV 5.2	KAV 5.3	KAV 5.4	KAV 5.5	
<i>Ditrupa arietina</i>						0
<i>Sthenelais cf limicola</i>						0
<i>Labioleanira yhleni</i>						0
<i>Sternaspis scutata</i>						0
<i>Aonide oxycephala</i>						0
<i>Laonice cirrata</i>		1	1			2
<i>Malacoceros fuliginosus</i>						0
<i>Prionospio sp.1</i>						0
<i>Prionospio sp.2</i>						0
<i>Paraprionospio pinnata</i>						0
<i>Spiophanes sp.*</i>						0
<i>Exogone cf naidina</i>						0
<i>Sphaerosyllis histrix</i>						0
<i>Syllis alternata</i>			1			1
<i>Pista cristata</i>			1			1
<i>Pista sp.*</i>					2	2
<i>Polycirrus sp.*</i>					1	1
Terebellidae*						0
<i>Terebellides stroemii</i>	1		1			2
Arthropoda						
<i>Leptocheirus pectinatus</i>			1			1
<i>Ampelisca tenuicornis</i>						0
<i>Ampelisca sp.*</i>						0
<i>Atylus vedlomensis</i>						0
<i>Medicorophium runcicorne</i>						0
<i>Tritaeta gibbosa*****</i>						0
<i>Erichthonius punctatus</i>						0
<i>Leucothoe lilljeborgi</i>						0
<i>Maera grossimana*****</i>		2				2
<i>Monoculodes cf acutipes</i>						0
<i>Periculodes longimanus</i>						0
<i>Harpinia dellavallei</i>						0
<i>Urothoe elegans</i>	1	1				2
<i>Atelecyclus rotundatus</i>						0
<i>Paguristes eremita*****</i>						0
<i>Ethusa mascarone</i>			1			1
<i>Goneplax rhomboides</i>						0
<i>Ebalia sp.*</i>						0
<i>Anapagurus sp.*</i>						0
Penaeidae*						0
<i>Xantho pilipes</i>		1				1
<i>Natatolana neglecta</i>						0
<i>Kupellonura mediterranea</i>						0
<i>Apseudopsis sp.**</i>			1			1
<i>Leptochelia savignyi</i>						0
Mollusca						
<i>Arcidae juv.</i>						0
<i>Papillicardium papillosum</i>		1	3			4
<i>Corbula gibba</i>	3		1			4
<i>Hiatella arctica</i>						0
<i>Limaria loscombi</i>						0
<i>Myrtea spinifera</i>	1					1
<i>Lucinidae juv sp.2</i>						0
<i>Mytilus galloprovincialis</i>					1	1
<i>Nucula juv.</i>						0
<i>Phaxas cf pellucidus</i>		2		1		3

Taxa	KAVALA GULF MAY'15					TOTAL
	KAV 5.1	KAV 5.2	KAV 5.3	KAV 5.4	KAV 5.5	
<i>Abra alba</i>						0
<i>Abra nitida</i>						0
<i>Solemya togata</i>						0
<i>Arcopagia balaustina</i>						0
<i>Moerella (tellina) distorta</i>						0
<i>Moerella (tellina) cf donacina</i>						0
<i>Tellina serrata</i>						0
<i>Tellina juv.</i>						0
<i>Thracia juv.</i>						0
<i>Thyasira flexuosa</i>						0
<i>Clausinella brongniartii</i> ***						0
<i>Pitar rudis</i>						0
<i>Timoclea ovata</i>	1					1
<i>Calyptrea chinensis</i>						0
<i>Euspira cf pulchella</i>						0
<i>Acanthochitona juv.</i>						0
<i>Antalis novemcostata</i> ****						0
Echinodermata						
<i>Amphiura filiformis</i>	1					1
<i>Amphiura chiajei</i>						0
<i>Amphipholis squamata</i>						0
<i>Ophiocten affinis</i>						0
<i>Echinocyamus pusillus</i>						0
Sipuncula						
<i>Aspidosiphon muelleri</i>					1	1
<i>Phascolosoma sp.</i>						0
<i>Onchnosoma steenstrupii</i>		2				2
<i>Golfingiiformes sp.2</i> ^{6†}						0
Chordata						
Ascidacea sp.1*		1				1
Ascidacea juv sp.2						0
Porifera						
<i>Suberites domuncula</i> *****						0
Miscellanea						
Echiura ^{7†}						0
Phoronida						0
Nematoda						0
Nemertea						0
Nº Specimens	14	20	22	12	17	85
Nº Taxa	9	15	15	9	14	38

Taxa	KAVALA GULF MAY'15					TOTAL
	KAV 6.1	KAV 6.2	KAV 6.3	KAV 6.4	KAV 6.5	
Annelida						
<i>Ampharete cf lindstroemi</i>						0
<i>Amphicteis gunneri</i>						0
<i>Laetmonice (Hermione) hystrix</i>						0
<i>Notomastus latericeus</i>		1		1		2
<i>Aphelochaeta marioni</i>	2					2
<i>Chaetozone cf gibber</i>						0
<i>Chaetozone sp.</i>						0
<i>Cirratulidae*</i>						0
<i>Monticellina dorsobranchialis</i>					1	1
<i>Cossura coasta</i>						0
<i>Schistomeringos sp.*</i>				1		1
<i>Eunice vittata</i>	2					2
<i>Lysidice unicornis</i>			3	1	1	5
<i>Marphysa bellii</i>	1		1	1		3
<i>Pherusa sp.</i>						0
<i>Glycera sp.</i>			2			2
<i>Glycera cf celtica</i>		1				1
<i>Glycera rouxi</i>						0
<i>Glycera unicornis</i>						0
<i>Goniada sp.</i>						0
<i>Lumbrineris latreilli</i>						0
<i>Lumbrineris sp.</i>						0
<i>Gallardonensis cf iberica</i>						0
<i>Scoletoma impatiens</i>						0
<i>Clymenura sp.</i>						0
<i>Euclymene sp.</i>			1			1
<i>Maldanidae*</i>			2			2
<i>Nicomache lumbricalis</i>						0
<i>Praxillella gracilis</i>						0
<i>Praxillella lophoseta</i>				1		1
<i>Rhodine gracilior</i>	1					1
<i>Magelona minuta</i>			2			2
<i>Magelona cf wilsoni</i>						0
<i>Nephtys hombergii</i>	1					1
<i>Nephtys sp.*</i>						0
<i>Drilonereis filum</i>						0
<i>Aponuphis bilineata</i>						0
<i>Aponuphis cf brementi</i>						0
<i>Aponuphis fauveli</i>			2	2	1	5
<i>Apobuphis juv.</i>						0
<i>Ophelina cylindrica</i>						0
<i>Owenia fusiformis</i>						0
<i>Paralacydonia paradoxa</i>	3	3	1	1	3	11
<i>Levinsenia cf demiri</i>						0
<i>Cirrophorus branchiatus</i>						0
<i>Amphictene auricoma</i>						0
<i>Phyllodoce maculata</i>						0
<i>Phyllodoce sp.*</i>						0
<i>Eteone sp.*</i>						0
<i>Eumida sp.*</i>						0
<i>Sigambra tentaculata</i>						0
<i>Poecilochaetus serpens</i>						0
<i>Harmothoe sp.*</i>						0
<i>Chone filicaudata</i>						0
<i>Scalibregma celticum</i>						0

Taxa	KAVALA GULF MAY'15					TOTAL
	KAV 6.1	KAV 6.2	KAV 6.3	KAV 6.4	KAV 6.5	
<i>Ditrupa arietina</i>						0
<i>Sthenelais cf limicola</i>						0
<i>Labioleanira yhleni</i>						0
<i>Sternaspis scutata</i>						0
<i>Aonide oxycephala</i>						0
<i>Laonice cirrata</i>						0
<i>Malacoceros fuliginosus</i>						0
<i>Prionospio sp.1</i>						0
<i>Prionospio sp.2</i>						0
<i>Paraprionospio pinnata</i>						0
<i>Spiophanes sp.*</i>				1		1
<i>Exogone cf naidina</i>						0
<i>Sphaerosyllis histrix</i>			1			1
<i>Syllis alternata</i>			1			1
<i>Pista cristata</i>						0
<i>Pista sp.*</i>					1	1
<i>Polycirrus sp.*</i>						0
Terebellidae*						0
<i>Terebellides stroemii</i>						0
Arthropoda						
<i>Leptocheirus pectinatus</i>						0
<i>Ampelisca tenuicornis</i>	1					1
<i>Ampelisca sp.*</i>						0
<i>Atylus vedlomensis</i>						0
<i>Medicorophium runcicorne</i>						0
<i>Tritaeta gibbosa</i> *****						0
<i>Erichthonius punctatus</i>			1			1
<i>Leucothoe lilljeborgi</i>						0
<i>Maera grossimana</i> *****						0
<i>Monoculodes cf acutipes</i>						0
<i>Periculodes longimanus</i>						0
<i>Harpinia dellavallei</i>						0
<i>Urothoe elegans</i>						0
<i>Atelecyclus rotundatus</i>						0
<i>Paguristes eremita</i> *****						0
<i>Ethusa mascarone</i>						0
<i>Goneplax rhomboides</i>						0
<i>Ebalia sp.*</i>						0
<i>Anapagurus sp.*</i>						0
Penaeidae*						0
<i>Xantho pilipes</i>						0
<i>Natatolana neglecta</i>						0
<i>Kupellonura mediterranea</i>						0
<i>Apseudopsis sp.**</i>	2					2
<i>Leptochelia savignyi</i>						0
Mollusca						
<i>Arcidae juv.</i>						0
<i>Papillicardium papillosum</i>						0
<i>Corbula gibba</i>	1	1			1	3
<i>Hiatella arctica</i>						0
<i>Limaria loscombi</i>						0
<i>Myrtea spinifera</i>	1	1	1			3
<i>Lucinidae juv sp.2</i>						0
<i>Mytilus galloprovincialis</i>						0
<i>Nucula juv.</i>						0
<i>Phaxas cf pellucidus</i>						0

Taxa	KAVALA GULF MAY'15					TOTAL
	KAV 6.1	KAV 6.2	KAV 6.3	KAV 6.4	KAV 6.5	
<i>Abra alba</i>						0
<i>Abra nitida</i>						0
<i>Solemya togata</i>						0
<i>Arcopagia balaustina</i>						0
<i>Moerella (tellina) distorta</i>						0
<i>Moerella (tellina) cf donacina</i>						0
<i>Tellina serrata</i>						0
<i>Tellina juv.</i>				1		1
<i>Thracia juv.</i>						0
<i>Thyasira flexuosa</i>						0
<i>Clausinella brongniartii</i> ***						0
<i>Pitar rudis</i>						0
<i>Timoclea ovata</i>	1		1		1	3
<i>Calyptrea chinensis</i>						0
<i>Euspira cf pulchella</i>						0
<i>Acanthochitona juv.</i>						0
<i>Antalis novemcostata</i> ****						0
Echinodermata						
<i>Amphiura filiformis</i>						0
<i>Amphiura chiajei</i>						0
<i>Amphipholis squamata</i>						0
<i>Ophiocten affinis</i>						0
<i>Echinocyamus pusillus</i>						0
Sipuncula						
<i>Aspidosiphon muelleri</i>	1	2	1	1		5
<i>Phascolosoma sp.</i>						0
<i>Onchnosoma steenstrupii</i>						0
<i>Golfingiiformes sp.2</i> ^{6†}						0
Chordata						
Ascidacea sp.1*						0
Ascidacea juv sp.2						0
Porifera						
<i>Suberites domuncula</i> *****						0
Miscellanea						
Echiura ^{7†}						0
Phoronida						0
Nematoda				2		2
Nemertea	1				2	3
Nº Specimens	18	9	20	13	11	71
Nº Taxa	13	6	14	11	8	31

Taxa	KAVALA GULF MAY'15					TOTAL
	KAV 7.1	KAV 7.2	KAV 7.3	KAV 7.4	KAV 7.5	
Annelida						
<i>Ampharete cf lindstroemi</i>						0
<i>Amphicteis gunneri</i>						0
<i>Laetmonice (Hermione) hystrix</i>						0
<i>Notomastus latericeus</i>						0
<i>Aphelochaeta marioni</i>						0
<i>Chaetozone cf gibber</i>						0
<i>Chaetozone sp.</i>						0
<i>Cirratulidae*</i>						0
<i>Monticellina dorsobranchialis</i>						0
<i>Cossura coasta</i>						0
<i>Schistomeringos sp.*</i>						0
<i>Eunice vittata</i>						0
<i>Lysidice unicornis</i>						0
<i>Marphysa bellii</i>						0
<i>Pherusa sp.</i>						0
<i>Glycera sp.</i>						0
<i>Glycera cf celtica</i>						0
<i>Glycera rouxi</i>						0
<i>Glycera unicornis</i>						0
<i>Goniada sp.</i>						0
<i>Lumbrineris latreilli</i>						0
<i>Lumbrineris sp.</i>						0
<i>Gallardonis cf iberica</i>					1	1
<i>Scoletoma impatiens</i>						0
<i>Clymenura sp.</i>						0
<i>Euclymene sp.</i>						0
<i>Maldanidae*</i>						0
<i>Nicomache lumbricalis</i>						0
<i>Praxillella gracilis</i>						0
<i>Praxillella lophoseta</i>						0
<i>Rhodine gracillior</i>						0
<i>Magelona minuta</i>						0
<i>Magelona cf wilsoni</i>						0
<i>Nephtys hombergii</i>						0
<i>Nephtys sp.*</i>						0
<i>Drilonereis filum</i>						0
<i>Aponuphis bilineata</i>						0
<i>Aponuphis cf brementi</i>						0
<i>Aponuphis fauveli</i>						0
<i>Apobuphis juv.</i>						0
<i>Ophelina cylindrica</i>						0
<i>Owenia fusiformis</i>						0
<i>Paralacydonia paradoxa</i>		1				1
<i>Levinsenia cf demiri</i>		1				1
<i>Cirrophorus branchiatus</i>						0
<i>Amphictene auricoma</i>						0
<i>Phyllodoce maculata</i>						0
<i>Phyllodoce sp.*</i>						0
<i>Eteone sp.*</i>						0
<i>Eumida sp.*</i>						0
<i>Sigambra tentaculata</i>						0
<i>Poecilochaetus serpens</i>						0
<i>Harmothoe sp.*</i>						0
<i>Chone filicaudata</i>						0
<i>Scalibregma celticum</i>						0

Taxa	KAVALA GULF MAY'15					TOTAL
	KAV 7.1	KAV 7.2	KAV 7.3	KAV 7.4	KAV 7.5	
<i>Ditrupa arietina</i>						0
<i>Sthenelais cf limicola</i>						0
<i>Labioleanira yhleni</i>						0
<i>Sternaspis scutata</i>		1	1	1	1	4
<i>Aonide oxycephala</i>						0
<i>Laonice cirrata</i>		1	1			2
<i>Malacoceros fuliginosus</i>						0
<i>Prionospio sp.1</i>						0
<i>Prionospio sp.2</i>						0
<i>Paraprionospio pinnata</i>	1					1
<i>Spiophanes sp.*</i>						0
<i>Exogone cf naidina</i>						0
<i>Sphaerosyllis histrix</i>						0
<i>Syllis alternata</i>						0
<i>Pista cristata</i>						0
<i>Pista sp.*</i>						0
<i>Polycirrus sp.*</i>						0
Terebellidae*						0
<i>Terebellides stroemii</i>						0
Arthropoda						
<i>Leptocheirus pectinatus</i>						0
<i>Ampelisca tenuicornis</i>						0
<i>Ampelisca sp.*</i>						0
<i>Atylus vedlomensis</i>						0
<i>Medicorophium runcicorne</i>						0
<i>Tritaeta gibbosa*****</i>						0
<i>Erichthonius punctatus</i>						0
<i>Leucothoe lilljeborgi</i>						0
<i>Maera grossimana*****</i>						0
<i>Monoculodes cf acutipes</i>						0
<i>Periculodes longimanus</i>						0
<i>Harpinia dellavallei</i>						0
<i>Urothoe elegans</i>						0
<i>Atelecyclus rotundatus</i>						0
<i>Paguristes eremita*****</i>						0
<i>Ethusa mascarone</i>						0
<i>Goneplax rhomboides</i>						0
<i>Ebalia sp.*</i>						0
<i>Anapagurus sp.*</i>						0
Penaeidae*						0
<i>Xantho pilipes</i>						0
<i>Natatolana neglecta</i>						0
<i>Kupellonura mediterranea</i>						0
<i>Apseudopsis sp.**</i>						0
<i>Leptochelia savignyi</i>						0
Mollusca						
<i>Arcidae juv.</i>						0
<i>Papillicardium papillosum</i>						0
<i>Corbula gibba</i>						0
<i>Hiatella arctica</i>						0
<i>Limaria loscombi</i>						0
<i>Myrtea spinifera</i>		1				1
<i>Lucinidae juv sp.2</i>						0
<i>Mytilus galloprovincialis</i>						0
<i>Nucula juv.</i>				1		1
<i>Phaxas cf pellucidus</i>						0

Taxa	KAVALA GULF MAY'15					TOTAL
	KAV 7.1	KAV 7.2	KAV 7.3	KAV 7.4	KAV 7.5	
<i>Abra alba</i>						0
<i>Abra nitida</i>		1		1		2
<i>Solemya togata</i>						0
<i>Arcopagia balaustina</i>						0
<i>Moerella (tellina) distorta</i>	1					1
<i>Moerella (tellina) cf donacina</i>						0
<i>Tellina serrata</i>						0
<i>Tellina juv.</i>						0
<i>Thracia juv.</i>						0
<i>Thyasira flexuosa</i>						0
<i>Clausinella brongniartii</i> ***				1		1
<i>Pitar rudis</i>						0
<i>Timoclea ovata</i>						0
<i>Calyptrea chinensis</i>						0
<i>Euspira cf pulchella</i>						0
<i>Acanthochitona juv.</i>						0
<i>Antalis novemcostata</i> ****						0
Echinodermata						
<i>Amphiura filiformis</i>						0
<i>Amphiura chiajei</i>						0
<i>Amphipholis squamata</i>						0
<i>Ophiocten affinis</i>						0
<i>Echinocyamus pusillus</i>						0
Sipuncula						
<i>Aspidosiphon muelleri</i>				1		1
<i>Phascolosoma sp.</i>						0
<i>Onchnosoma steenstrupii</i>						0
<i>Golfingiiformes sp.2</i> ^{6†}						0
Chordata						
Ascidacea sp.1*						0
Ascidacea juv sp.2						0
Porifera						
<i>Suberites domuncula</i> *****						0
Miscellanea						
Echiura ^{7†}						0
Phoronida						0
Nematoda						0
Nemertea			1			1
Nº Specimens	2	6	3	5	2	18
Nº Taxa	2	6	3	5	2	13

Taxa	KAVALA GULF MAY'15					TOTAL
	KAV 8.1	KAV 8.2	KAV 8.3	KAV 8.4	KAV 8.5	
Annelida						
<i>Ampharete cf lindstroemi</i>						0
<i>Amphicteis gunneri</i>						0
<i>Laetmonice (Hermione) hystrix</i>		1				1
<i>Notomastus latericeus</i>	1					1
<i>Aphelochaeta marioni</i>						0
<i>Chaetozone cf gibber</i>						0
<i>Chaetozone sp.</i>						0
Cirratulidae*						0
<i>Monticellina dorsobranchialis</i>						0
<i>Cossura coasta</i>						0
<i>Schistomeringos sp.*</i>						0
<i>Eunice vittata</i>	1			2		3
<i>Lysidice unicornis</i>			2			2
<i>Marphysa bellii</i>	1					1
<i>Pherusa sp.</i>		1				1
<i>Glycera sp.</i>			1			1
<i>Glycera cf celtica</i>						0
<i>Glycera rouxi</i>						0
<i>Glycera unicornis</i>						0
<i>Goniada sp.</i>						0
<i>Lumbrineris latreilli</i>	1				2	3
<i>Lumbrineris sp.</i>						0
<i>Gallardonensis cf iberica</i>			1			1
<i>Scoletoma impatiens</i>						0
<i>Clymenura sp.</i>				1		1
<i>Euclymene sp.</i>						0
Maldanidae*						0
<i>Nicomache lumbricalis</i>						0
<i>Praxillella gracilis</i>						0
<i>Praxillella lophoseta</i>						0
<i>Rhodine gracilior</i>						0
<i>Magelona minuta</i>		1				1
<i>Magelona cf wilsoni</i>						0
<i>Nephtys hombergii</i>						0
<i>Nephtys sp.*</i>						0
<i>Drilonereis filum</i>						0
<i>Aponuphis bilineata</i>	1			1		2
<i>Aponuphis cf brementi</i>						0
<i>Aponuphis fauveli</i>			1			1
<i>Apobuphis juv.</i>						0
<i>Ophelina cylindrica</i>						0
<i>Owenia fusiformis</i>						0
<i>Paralacydonia paradoxa</i>	2		3	1	2	8
<i>Levinsenia cf demiri</i>						0
<i>Cirrophorus branchiatus</i>						0
<i>Amphictene auricoma</i>						0
<i>Phyllodoce maculata</i>						0
<i>Phyllodoce sp.*</i>						0
<i>Eteone sp.*</i>						0
<i>Eumida sp.*</i>						0
<i>Sigambra tentaculata</i>						0
<i>Poecilochaetus serpens</i>				1		1
<i>Harmothoe sp.*</i>						0
<i>Chone filicaudata</i>						0
<i>Scalibregma celticum</i>	1					1

Taxa	KAVALA GULF MAY'15					TOTAL
	KAV 8.1	KAV 8.2	KAV 8.3	KAV 8.4	KAV 8.5	
<i>Ditrupa arietina</i>						0
<i>Sthenelais cf limicola</i>						0
<i>Labioleanira yhleni</i>						0
<i>Sternaspis scutata</i>						0
<i>Aonide oxycephala</i>						0
<i>Laonice cirrata</i>						0
<i>Malacoceros fuliginosus</i>						0
<i>Prionospio sp.1</i>						0
<i>Prionospio sp.2</i>						0
<i>Paraprionospio pinnata</i>						0
<i>Spiophanes sp.*</i>						0
<i>Exogone cf naidina</i>						0
<i>Sphaerosyllis histrix</i>			1			1
<i>Syllis alternata</i>						0
<i>Pista cristata</i>						0
<i>Pista sp.*</i>						0
<i>Polycirrus sp.*</i>						0
Terebellidae*						0
<i>Terebellides stroemii</i>						0
Arthropoda						
<i>Leptocheirus pectinatus</i>						0
<i>Ampelisca tenuicornis</i>						0
<i>Ampelisca sp.*</i>		1				1
<i>Atylus vedlomensis</i>	1	2				3
<i>Medicorophium runcicorne</i>						0
<i>Tritaeta gibbosa</i> *****						0
<i>Erichthonius punctatus</i>						0
<i>Leucothoe lilljeborgi</i>						0
<i>Maera grossimana</i> *****						0
<i>Monoculodes cf acutipes</i>						0
<i>Periculodes longimanus</i>						0
<i>Harpinia dellavallei</i>						0
<i>Urothoe elegans</i>				1		1
<i>Atelecyclus rotundatus</i>						0
<i>Paguristes eremita</i> *****						0
<i>Ethusa mascarone</i>						0
<i>Goneplax rhomboides</i>						0
<i>Ebalia sp.*</i>						0
<i>Anapagurus sp.*</i>						0
Penaeidae*						0
<i>Xantho pilipes</i>						0
<i>Natatolana neglecta</i>		1				1
<i>Kupellonura mediterranea</i>			1			1
<i>Apseudopsis sp.**</i>	1					1
<i>Leptochelia savignyi</i>		1				1
Mollusca						
<i>Arcidae juv.</i>						0
<i>Papillicardium papillosum</i>			2	2	1	5
<i>Corbula gibba</i>			2	1		3
<i>Hiatella arctica</i>						0
<i>Limaria loscombi</i>						0
<i>Myrtea spinifera</i>						0
<i>Lucinidae juv sp.2</i>						0
<i>Mytilus galloprovincialis</i>						0
<i>Nucula juv.</i>				1		1
<i>Phaxas cf pellucidus</i>						0

Taxa	KAVALA GULF MAY'15					TOTAL
	KAV 8.1	KAV 8.2	KAV 8.3	KAV 8.4	KAV 8.5	
<i>Abra alba</i>						0
<i>Abra nitida</i>						0
<i>Solemya togata</i>						0
<i>Arcopagia balaustina</i>						0
<i>Moerella (tellina) distorta</i>						0
<i>Moerella (tellina) cf donacina</i>						0
<i>Tellina serrata</i>						0
<i>Tellina juv.</i>						0
<i>Thracia juv.</i>						0
<i>Thyasira flexuosa</i>						0
<i>Clausinella brongniartii</i> ***						0
<i>Pitar rudis</i>			1	1		2
<i>Timoclea ovata</i>		1	1	1		3
<i>Calyptrea chinensis</i>					1	1
<i>Euspira cf pulchella</i>						0
<i>Acanthochitona juv.</i>						0
<i>Antalis novemcostata</i> ****	1					1
Echinodermata						
<i>Amphiura filiformis</i>					1	1
<i>Amphiura chiajei</i>						0
<i>Amphipholis squamata</i>						0
<i>Ophiocten affinis</i>						0
<i>Echinocyamus pusillus</i>						0
Sipuncula						
<i>Aspidosiphon muelleri</i>						0
<i>Phascolosoma sp.</i>						0
<i>Onchnosoma steenstrupii</i>						0
<i>Golfingiiformes sp.2</i> ^{6†}		1				1
Chordata						
Ascidacea sp.1*						0
Ascidacea juv sp.2						0
Porifera						
<i>Suberites domuncula</i> *****						0
Miscellanea						
<i>Echiura</i> ^{7†}		2				2
Phoronida						0
Nematoda						0
Nemertea						0
Nº Specimens	11	12	16	13	7	59
Nº Taxa	10	10	11	11	5	34

Taxa	KAVALA GULF MAY'15					TOTAL
	KAV 9.1	KAV 9.2	KAV 9.3	KAV 9.4	KAV 9.5	
Annelida						
<i>Ampharete cf lindstroemi</i>						0
<i>Amphicteis gunneri</i>						0
<i>Laetmonice (Hermione) hystrix</i>						0
<i>Notomastus latericeus</i>					1	1
<i>Aphelochaeta marioni</i>						0
<i>Chaetozone cf gibber</i>						0
<i>Chaetozone sp.</i>						0
<i>Cirratulidae*</i>						0
<i>Monticellina dorsobranchialis</i>						0
<i>Cossura coasta</i>						0
<i>Schistomeringos sp.*</i>					1	1
<i>Eunice vittata</i>	1	4	1	1		7
<i>Lysidice unicornis</i>		5	1	5	1	12
<i>Marphysa bellii</i>	3	7	3	2	6	21
<i>Pherusa sp.</i>						0
<i>Glycera sp.</i>						0
<i>Glycera cf celtica</i>						0
<i>Glycera rouxi</i>						0
<i>Glycera unicornis</i>					1	1
<i>Goniada sp.</i>						0
<i>Lumbrineris latreilli</i>					1	1
<i>Lumbrineris sp.</i>						0
<i>Gallardonensis cf iberica</i>						0
<i>Scoletoma impatiens</i>						0
<i>Clymenura sp.</i>					1	1
<i>Euclymene sp.</i>	5	2		5		12
<i>Maldanidae*</i>						0
<i>Nicomache lumbricalis</i>						0
<i>Praxillella gracilis</i>						0
<i>Praxillella lophoseta</i>			3			3
<i>Rhodine gracilior</i>						0
<i>Magelona minuta</i>		1	1	1		3
<i>Magelona cf wilsoni</i>	2			2		4
<i>Nephtys hombergii</i>						0
<i>Nephtys sp.*</i>						0
<i>Drilonereis filum</i>						0
<i>Aponuphis bilineata</i>						0
<i>Aponuphis cf brementi</i>					1	1
<i>Aponuphis fauveli</i>			4		2	6
<i>Apobuphis juv.</i>						0
<i>Ophelina cylindrica</i>						0
<i>Owenia fusiformis</i>			1	1		2
<i>Paralacydonia paradoxa</i>					2	2
<i>Levinsenia cf demiri</i>						0
<i>Cirrophorus branchiatus</i>						0
<i>Amphictene auricoma</i>						0
<i>Phyllodoce maculata</i>						0
<i>Phyllodoce sp.*</i>						0
<i>Eteone sp.*</i>						0
<i>Eumida sp.*</i>						0
<i>Sigambra tentaculata</i>						0
<i>Poecilochaetus serpens</i>						0
<i>Harmothoe sp.*</i>						0
<i>Chone filicaudata</i>						0
<i>Scalibregma celticum</i>						0

Taxa	KAVALA GULF MAY'15					TOTAL
	KAV 9.1	KAV 9.2	KAV 9.3	KAV 9.4	KAV 9.5	
<i>Ditrupa arietina</i>		1	1	1		3
<i>Sthenelais cf limicola</i>						0
<i>Labioleanira yhleni</i>						0
<i>Sternaspis scutata</i>						0
<i>Aonide oxycephala</i>						0
<i>Laonice cirrata</i>						0
<i>Malacoceros fuliginosus</i>						0
<i>Prionospio sp.1</i>						0
<i>Prionospio sp.2</i>						0
<i>Paraprionospio pinnata</i>						0
<i>Spiophanes sp.*</i>						0
<i>Exogone cf naidina</i>						0
<i>Sphaerosyllis histrix</i>						0
<i>Syllis alternata</i>						0
<i>Pista cristata</i>					2	2
<i>Pista sp.*</i>						0
<i>Polycirrus sp.*</i>						0
Terebellidae*						0
<i>Terebellides stroemii</i>						0
Arthropoda						
<i>Leptocheirus pectinatus</i>						0
<i>Ampelisca tenuicornis</i>						0
<i>Ampelisca sp.*</i>						0
<i>Atylus vedlomensis</i>						0
<i>Medicorophium runcicorne</i>						0
<i>Tritaeta gibbosa</i> *****						0
<i>Ericthonius punctatus</i>						0
<i>Leucothoe lilljeborgi</i>						0
<i>Maera grossimana</i> *****						0
<i>Monoculodes cf acutipes</i>						0
<i>Periculodes longimanus</i>						0
<i>Harpinia dellavallei</i>						0
<i>Urothoe elegans</i>						0
<i>Atelecyclus rotundatus</i>						0
<i>Paguristes eremita</i> *****						0
<i>Ethusa mascarone</i>						0
<i>Goneplax rhomboides</i>						0
<i>Ebalia sp.*</i>						0
<i>Anapagurus sp.*</i>						0
Penaeidae*						0
<i>Xantho pilipes</i>						0
<i>Natatolana neglecta</i>						0
<i>Kupellonura mediterranea</i>						0
<i>Apseudopsis sp.**</i>						0
<i>Leptochelia savignyi</i>						0
Mollusca						
<i>Arcidae juv.</i>				1		1
<i>Papillicardium papillosum</i>						0
<i>Corbula gibba</i>			2	3	16	21
<i>Hiatella arctica</i>						0
<i>Limaria loscombi</i>						0
<i>Myrtea spinifera</i>	3	3		1	1	8
<i>Lucinidae juv sp.2</i>	1		1	2		4
<i>Mytilus galloprovincialis</i>						0
<i>Nucula juv.</i>				2	1	3
<i>Phaxas cf pellucidus</i>						0

Taxa	KAVALA GULF MAY'15					TOTAL
	KAV 9.1	KAV 9.2	KAV 9.3	KAV 9.4	KAV 9.5	
<i>Abra alba</i>						0
<i>Abra nitida</i>						0
<i>Solemya togata</i>					1	1
<i>Arcopagia balaustina</i>						0
<i>Moerella (tellina) distorta</i>						0
<i>Moerella (tellina) cf donacina</i>						0
<i>Tellina serrata</i>						0
<i>Tellina juv.</i>						0
<i>Thracia juv.</i>		1				1
<i>Thyasira flexuosa</i>	1		2	6	1	10
<i>Clausinella brongniartii</i> ***						0
<i>Pitar rudis</i>		1				1
<i>Timoclea ovata</i>		2	2	1	1	6
<i>Calyptrea chinensis</i>						0
<i>Euspira cf pulchella</i>						0
<i>Acanthochitona juv.</i>						0
<i>Antalis novemcostata</i> ****			1			1
Echinodermata						
<i>Amphiura filiformis</i>						0
<i>Amphiura chiajei</i>						0
<i>Amphipholis squamata</i>						0
<i>Ophiocten affinis</i>						0
<i>Echinocyamus pusillus</i>						0
Sipuncula						
<i>Aspidosiphon muelleri</i>				1	1	2
<i>Phascolosoma sp.</i>		1				1
<i>Onchnosoma steenstrupii</i>						0
<i>Golfingiiformes sp.2</i> ^{6†}						0
Chordata						
Ascidacea sp.1*						0
Ascidacea juv sp.2						0
Porifera						
<i>Suberites domuncula</i> *****						0
Miscellanea						
Echiura ^{7†}						0
Phoronida	1	4	1	1	3	10
Nematoda					1	1
Nemertea	1	1	1			3
Nº Specimens	18	33	25	36	45	157
Nº Taxa	9	13	15	17	20	34

Taxa	KAVALA GULF MAY'15					TOTAL
	KAV 10.1	KAV 10.2	KAV 10.3	KAV 10.4	KAV 10.5	
Annelida						
<i>Ampharete cf lindstroemi</i>						0
<i>Amphicteis gunneri</i>						0
<i>Laetmonice (Hermione) hystrix</i>						0
<i>Notomastus latericeus</i>						0
<i>Aphelochaeta marioni</i>						0
<i>Chaetozone cf gibber</i>		1			1	2
<i>Chaetozone sp.</i>						0
Cirratulidae*	2			2		4
<i>Monticellina dorsobranchialis</i>						0
<i>Cossura coasta</i>						0
<i>Schistomeringos sp.*</i>						0
<i>Eunice vittata</i>	1	1				2
<i>Lysidice unicornis</i>	4	5	2	2	3	16
<i>Marphysa bellii</i>		2	1	1		4
<i>Pherusa sp.</i>						0
<i>Glycera sp.</i>	1	3	3	1		8
<i>Glycera cf celtica</i>						0
<i>Glycera rouxi</i>						0
<i>Glycera unicornis</i>						0
<i>Goniada sp.</i>						0
<i>Lumbrineris latreilli</i>						0
<i>Lumbrineris sp.</i>		1	4			5
<i>Gallardonensis cf iberica</i>						0
<i>Scoletoma impatiens</i>						0
<i>Clymenura sp.</i>						0
<i>Euclymene sp.</i>		1				1
Maldanidae*						0
<i>Nicomache lumbricalis</i>						0
<i>Praxillella gracilis</i>					1	1
<i>Praxillella lophoseta</i>	2	9	1	1	2	15
<i>Rhodine gracillior</i>						0
<i>Magelona minuta</i>						0
<i>Magelona cf wilsoni</i>						0
<i>Nephtys hombergii</i>						0
<i>Nephtys sp.*</i>			1			1
<i>Drilonereis filum</i>				2		2
<i>Aponuphis bilineata</i>				1		1
<i>Aponuphis cf brementi</i>						0
<i>Aponuphis fauveli</i>	1		3	2	1	7
<i>Apobuphis juv.</i>						0
<i>Ophelina cylindricaudata</i>						0
<i>Owenia fusiformis</i>						0
<i>Paralacydonia paradoxa</i>	3					3
<i>Levinsonia cf demiri</i>						0
<i>Cirrophorus branchiatus</i>						0
<i>Amphictene auricoma</i>	1					1
<i>Phyllodoce maculata</i>						0
<i>Phyllodoce sp.*</i>						0
<i>Eteone sp.*</i>			1			1
<i>Eumida sp.*</i>						0
<i>Sigambra tentaculata</i>						0
<i>Poecilochaetus serpens</i>		1		1		2
<i>Harmothoe sp.*</i>						0
<i>Chone filicaudata</i>						0
<i>Scalibregma celticum</i>						0

Taxa	KAVALA GULF MAY'15					TOTAL
	KAV 10.1	KAV 10.2	KAV 10.3	KAV 10.4	KAV 10.5	
<i>Ditrupa arietina</i>			1			1
<i>Sthenelais cf limicola</i>				1		1
<i>Labioleanira yhleni</i>						0
<i>Sternaspis scutata</i>						0
<i>Aonide oxycephala</i>						0
<i>Laonice cirrata</i>			1			1
<i>Malacoceros fuliginosus</i>						0
<i>Prionospio sp.1</i>						0
<i>Prionospio sp.2</i>						0
<i>Paraprionospio pinnata</i>						0
<i>Spiophanes sp.*</i>	1					1
<i>Exogone cf naidina</i>						0
<i>Sphaerosyllis histrix</i>						0
<i>Syllis alternata</i>						0
<i>Pista cristata</i>	1					1
<i>Pista sp.*</i>						0
<i>Polycirrus sp.*</i>						0
Terebellidae*						0
<i>Terebellides stroemii</i>						0
Arthropoda						
<i>Leptocheirus pectinatus</i>						0
<i>Ampelisca tenuicornis</i>						0
<i>Ampelisca sp.*</i>						0
<i>Atylus vedlomensis</i>						0
<i>Medicorophium runcicorne</i>						0
<i>Tritaeta gibbosa</i> ****						0
<i>Erichthonius punctatus</i>						0
<i>Leucothoe lilljeborgi</i>						0
<i>Maera grossimana</i> *****						0
<i>Monoculodes cf acutipes</i>						0
<i>Periculodes longimanus</i>						0
<i>Harpinia dellavallei</i>	1					1
<i>Urothoe elegans</i>						0
<i>Atelecyclus rotundatus</i>						0
<i>Paguristes eremita</i> *****						0
<i>Ethusa mascarone</i>						0
<i>Goneplax rhomboides</i>			1			1
<i>Ebalia sp.*</i>						0
<i>Anapagurus sp.*</i>						0
Penaeidae*						0
<i>Xantho pilipes</i>						0
<i>Natatolana neglecta</i>						0
<i>Kupellonura mediterranea</i>						0
<i>Apseudopsis sp.**</i>						0
<i>Leptochelia savignyi</i>						0
Mollusca						
<i>Arcidae juv.</i>						0
<i>Papillicardium papillosum</i>	2					2
<i>Corbula gibba</i>	1			1		2
<i>Hiatella arctica</i>						0
<i>Limaria loscombi</i>						0
<i>Myrtea spinifera</i>		1	1			2
<i>Lucinidae juv sp.2</i>						0
<i>Mytilus galloprovincialis</i>						0
<i>Nucula juv.</i>						0
<i>Phaxas cf pellucidus</i>						0

Taxa	KAVALA GULF MAY'15					TOTAL
	KAV 10.1	KAV 10.2	KAV 10.3	KAV 10.4	KAV 10.5	
<i>Abra alba</i>						0
<i>Abra nitida</i>						0
<i>Solemya togata</i>						0
<i>Arcopagia balaustina</i>						0
<i>Moerella (tellina) distorta</i>						0
<i>Moerella (tellina) cf donacina</i>		1				1
<i>Tellina serrata</i>						0
<i>Tellina juv.</i>	1					1
<i>Thracia juv.</i>						0
<i>Thyasira flexuosa</i>						0
<i>Clausinella brongniartii</i> ***				1		1
<i>Pitar rudis</i>						0
<i>Timoclea ovata</i>						0
<i>Calyptrea chinensis</i>						0
<i>Euspira cf pulchella</i>						0
<i>Acanthochitona juv.</i>						0
<i>Antalis novemcostata</i> ****						0
Echinodermata						
<i>Amphiura filiformis</i>						0
<i>Amphiura chiajei</i>						0
<i>Amphipholis squamata</i>	7	2	1	4	1	15
<i>Ophiocten affinis</i>						0
<i>Echinocyamus pusillus</i>						0
Sipuncula						
<i>Aspidosiphon muelleri</i>				1		1
<i>Phascolosoma sp.</i>						0
<i>Onchnosoma steenstrupii</i>						0
<i>Golfingiiformes sp.2</i> ^{6†}	1					1
Chordata						
Ascidacea sp.1*						0
Ascidacea juv sp.2						0
Porifera						
<i>Suberites domuncula</i> *****						0
Miscellanea						
Echiura ^{7†}						0
Phoronida					1	1
Nematoda	4			1		5
Nemertea						0
Nº Specimens	34	28	21	22	10	115
Nº Taxa	17	12	13	15	7	36

Taxa	KAVALA GULF MAY'15					TOTAL
	KAV 11.1	KAV 11.2	KAV 11.3	KAV 11.4	KAV 11.5	
Annelida						
<i>Ampharete cf lindstroemi</i>						0
<i>Amphicteis gunneri</i>						0
<i>Laetmonice (Hermione) hystrix</i>						0
<i>Notomastus latericeus</i>					1	1
<i>Aphelochaeta marioni</i>						0
<i>Chaetozone cf gibber</i>					1	1
<i>Chaetozone sp.</i>		1				1
<i>Cirratulidae*</i>						0
<i>Monticellina dorsobranchialis</i>						0
<i>Cossura coasta</i>						0
<i>Schistomeringos sp.*</i>						0
<i>Eunice vittata</i>						0
<i>Lysidice unicornis</i>	1	2		2	2	7
<i>Marphysa bellii</i>	2	4	2	1	3	12
<i>Pherusa sp.</i>						0
<i>Glycera sp.</i>						0
<i>Glycera cf celtica</i>						0
<i>Glycera rouxi</i>		1				1
<i>Glycera unicornis</i>						0
<i>Goniada sp.</i>			1			1
<i>Lumbrineris latreilli</i>	1					1
<i>Lumbrineris sp.</i>						0
<i>Gallardonensis cf iberica</i>						0
<i>Scoletoma impatiens</i>						0
<i>Clymenura sp.</i>						0
<i>Euclymene sp.</i>				1		1
<i>Maldanidae*</i>						0
<i>Nicomache lumbricalis</i>						0
<i>Praxillella gracilis</i>						0
<i>Praxillella lophoseta</i>	1					1
<i>Rhodine gracilior</i>						0
<i>Magelona minuta</i>						0
<i>Magelona cf wilsoni</i>						0
<i>Nephtys hombergii</i>						0
<i>Nephtys sp.*</i>						0
<i>Drilonereis filum</i>						0
<i>Aponuphis bilineata</i>	2	3	1		1	7
<i>Aponuphis cf brementi</i>						0
<i>Aponuphis fauveli</i>	2		4	1	1	8
<i>Apobuphis juv.</i>						0
<i>Ophelina cylindrica data</i>						0
<i>Owenia fusiformis</i>						0
<i>Paralacydonia paradoxa</i>	1	1				2
<i>Levinsenia cf demiri</i>						0
<i>Cirrophorus branchiatus</i>						0
<i>Amphictene auricoma</i>						0
<i>Phyllodoce maculata</i>					1	1
<i>Phyllodoce sp.*</i>						0
<i>Eteone sp.*</i>						0
<i>Eumida sp.*</i>						0
<i>Sigambra tentaculata</i>			1			1
<i>Poecilochaetus serpens</i>						0
<i>Harmothoe sp.*</i>						0
<i>Chone filicaudata</i>						0
<i>Scalibregma celticum</i>						0

Taxa	KAVALA GULF MAY'15					TOTAL
	KAV 11.1	KAV 11.2	KAV 11.3	KAV 11.4	KAV 11.5	
<i>Ditrupa arietina</i>						0
<i>Sthenelais cf limicola</i>						0
<i>Labioleanira yhleni</i>						0
<i>Sternaspis scutata</i>						0
<i>Aonide oxycephala</i>						0
<i>Laonice cirrata</i>						0
<i>Malacoceros fuliginosus</i>						0
<i>Prionospio sp.1</i>						0
<i>Prionospio sp.2</i>						0
<i>Paraprionospio pinnata</i>						0
<i>Spiophanes sp.*</i>						0
<i>Exogone cf naidina</i>						0
<i>Sphaerosyllis histrix</i>						0
<i>Syllis alternata</i>						0
<i>Pista cristata</i>					1	1
<i>Pista sp.*</i>						0
<i>Polycirrus sp.*</i>						0
Terebellidae*			1			1
<i>Terebellides stroemii</i>						0
Arthropoda						
<i>Leptocheirus pectinatus</i>						0
<i>Ampelisca tenuicornis</i>						0
<i>Ampelisca sp.*</i>						0
<i>Atylus vedlomensis</i>			1	2		3
<i>Medicorophium runcicorne</i>						0
<i>Tritaeta gibbosa*****</i>				1	2	3
<i>Erichthonius punctatus</i>						0
<i>Leucothoe lilljeborgi</i>						0
<i>Maera grossimana*****</i>						0
<i>Monoculodes cf acutipes</i>					1	1
<i>Periculodes longimanus</i>						0
<i>Harpinia dellavallei</i>						0
<i>Urothoe elegans</i>						0
<i>Atelecyclus rotundatus</i>						0
<i>Paguristes eremita*****</i>				1		1
<i>Ethusa mascarone</i>						0
<i>Goneplax rhomboides</i>						0
<i>Ebalia sp.*</i>						0
<i>Anapagurus sp.*</i>						0
Penaeidae*						0
<i>Xantho pilipes</i>						0
<i>Natatolana neglecta</i>						0
<i>Kupellonura mediterranea</i>						0
<i>Apseudopsis sp.**</i>						0
<i>Leptochelia savignyi</i>						0
Mollusca						
Arcidae juv.						0
<i>Papillicardium papillosum</i>						0
<i>Corbula gibba</i>					1	1
<i>Hiatella arctica</i>						0
<i>Limaria loscombi</i>				1		1
<i>Myrtea spinifera</i>			1			1
<i>Lucinidae juv sp.2</i>						0
<i>Mytilus galloprovincialis</i>						0
<i>Nucula juv.</i>						0
<i>Phaxas cf pellucidus</i>						0

Taxa	KAVALA GULF MAY'15					TOTAL
	KAV 11.1	KAV 11.2	KAV 11.3	KAV 11.4	KAV 11.5	
<i>Abra alba</i>						0
<i>Abra nitida</i>						0
<i>Solemya togata</i>						0
<i>Arcopagia balaustina</i>		1				1
<i>Moerella (tellina) distorta</i>						0
<i>Moerella (tellina) cf donacina</i>				1	1	2
<i>Tellina serrata</i>						0
<i>Tellina juv.</i>						0
<i>Thracia juv.</i>						0
<i>Thyasira flexuosa</i>						0
<i>Clausinella brongniartii</i> ***						0
<i>Pitar rudis</i>						0
<i>Timoclea ovata</i>					1	1
<i>Calyptrea chinensis</i>						0
<i>Euspira cf pulchella</i>						0
<i>Acanthochitona juv.</i>						0
<i>Antalis novemcostata</i> ****						0
Echinodermata						
<i>Amphiura filiformis</i>						0
<i>Amphiura chiajei</i>					1	1
<i>Amphipholis squamata</i>						0
<i>Ophiocten affinis</i>	1					1
<i>Echinocyamus pusillus</i>						0
Sipuncula						
<i>Aspidosiphon muelleri</i>						0
<i>Phascolosoma sp.</i>						0
<i>Onchnosoma steenstrupii</i>						0
<i>Golfingiiformes sp.2</i> ^{6†}						0
Chordata						
Ascidacea sp.1*						0
Ascidacea juv sp.2				110		110
Porifera						
<i>Suberites domuncula</i> *****				1		1
Miscellanea						
<i>Echiura</i> ^{7†}						0
Phoronida						0
Nematoda		1				1
Nemertea						0
Nº Specimens	11	14	12	122	18	177
Nº Taxa	8	8	8	11	14	32

Taxa	KAVALA GULF MAY'15					TOTAL
	KAV 12.1	KAV 12.2	KAV 12.3	KAV 12.4	KAV 12.5	
Annelida						
<i>Ampharete cf lindstroemi</i>						0
<i>Amphicteis gunneri</i>						0
<i>Laetmonice (Hermione) hystrix</i>						0
<i>Notomastus latericeus</i>			1			1
<i>Aphelochaeta marioni</i>						0
<i>Chaetozone cf gibber</i>						0
<i>Chaetozone sp.</i>						0
Cirratulidae*						0
<i>Monticellina dorsobranchialis</i>						0
<i>Cossura coasta</i>						0
<i>Schistomeringos sp.*</i>						0
<i>Eunice vittata</i>	4	1		2		7
<i>Lysidice unicornis</i>	6	4	2	5	5	22
<i>Marphysa bellii</i>	1	1		1	3	6
<i>Pherusa sp.</i>						0
<i>Glycera sp.</i>		1		2	1	4
<i>Glycera cf celtica</i>						0
<i>Glycera rouxi</i>						0
<i>Glycera unicornis</i>						0
<i>Goniada sp.</i>		1				1
<i>Lumbrineris latreilli</i>						0
<i>Lumbrineris sp.</i>	2	1				3
<i>Gallardoneris cf iberica</i>						0
<i>Scoletoma impatiens</i>						0
<i>Clymenura sp.</i>		1		2	3	6
<i>Euclymene sp.</i>	2	1	1	2		6
Maldanidae*						0
<i>Nicomache lumbricalis</i>						0
<i>Praxillella gracilis</i>						0
<i>Praxillella lophoseta</i>	1	1			2	4
<i>Rhodine gracilior</i>						0
<i>Magelona minuta</i>						0
<i>Magelona cf wilsoni</i>						0
<i>Nephtys hombergii</i>						0
<i>Nephtys sp.*</i>						0
<i>Drilonereis filum</i>						0
<i>Aponuphis bilineata</i>			1			1
<i>Aponuphis cf brementi</i>						0
<i>Aponuphis fauveli</i>			1	1	3	5
<i>Apobuphis juv.</i>						0
<i>Ophelina cylindrica</i>						0
<i>Owenia fusiformis</i>						0
<i>Paralacydonia paradoxa</i>			1	2		3
<i>Levinsenia cf demiri</i>						0
<i>Cirrophorus branchiatus</i>						0
<i>Amphictene auricoma</i>						0
<i>Phyllodoce maculata</i>						0
<i>Phyllodoce sp.*</i>						0
<i>Eteone sp.*</i>						0
<i>Eumida sp.*</i>						0
<i>Sigambra tentaculata</i>						0
<i>Poecilochaetus serpens</i>						0
<i>Harmothoe sp.*</i>				1	1	2
<i>Chone filicaudata</i>						0
<i>Scalibregma celticum</i>	1					1

Taxa	KAVALA GULF MAY'15					TOTAL
	KAV 12.1	KAV 12.2	KAV 12.3	KAV 12.4	KAV 12.5	
<i>Ditrupa arietina</i>						0
<i>Sthenelais cf limicola</i>				2		2
<i>Labioleanira yhleni</i>						0
<i>Sternaspis scutata</i>						0
<i>Aonide oxycephala</i>	1					1
<i>Laonice cirrata</i>						0
<i>Malacoceros fuliginosus</i>						0
<i>Prionospio sp.1</i>						0
<i>Prionospio sp.2</i>						0
<i>Paraprionospio pinnata</i>						0
<i>Spiophanes sp.*</i>						0
<i>Exogone cf naidina</i>	1					1
<i>Sphaerosyllis histrix</i>						0
<i>Syllis alternata</i>	2	1				3
<i>Pista cristata</i>	6	4			6	16
<i>Pista sp.*</i>				2		2
<i>Polycirrus sp.*</i>	2				1	3
Terebellidae*						0
<i>Terebellides stroemii</i>	2					2
Arthropoda						
<i>Leptocheirus pectinatus</i>						0
<i>Ampelisca tenuicornis</i>						0
<i>Ampelisca sp.*</i>	1				1	2
<i>Atylus vedlomensis</i>						0
<i>Medicorophium runcicorne</i>	1					1
<i>Tritaeta gibbosa</i> ****						0
<i>Erichthonius punctatus</i>						0
<i>Leucothoe lilljeborgi</i>	1					1
<i>Maera grossimana</i> *****						0
<i>Monoculodes cf acutipes</i>					1	1
<i>Periculodes longimanus</i>						0
<i>Harpinia dellavallei</i>						0
<i>Urothoe elegans</i>					1	1
<i>Atelecyclus rotundatus</i>						0
<i>Paguristes eremita</i> *****						0
<i>Ethusa mascarone</i>						0
<i>Goneplax rhomboides</i>						0
<i>Ebalia sp.*</i>					1	1
<i>Anapagurus sp.*</i>					1	1
Penaeidae*						0
<i>Xantho pilipes</i>						0
<i>Natatolana neglecta</i>				2		2
<i>Kupellonura mediterranea</i>						0
<i>Apseudopsis sp.**</i>				2	3	5
<i>Leptochelia savignyi</i>						0
Mollusca						
<i>Arcidae juv.</i>						0
<i>Papillicardium papillosum</i>	1			1	4	6
<i>Corbula gibba</i>	11	3	1	15	18	48
<i>Hiatella arctica</i>	1					1
<i>Limaria loscombi</i>						0
<i>Myrtea spinifera</i>		1	1	1		3
<i>Lucinidae juv sp.2</i>				1		1
<i>Mytilus galloprovincialis</i>						0
<i>Nucula juv.</i>						0
<i>Phaxas cf pellucidus</i>		2				2

Taxa	KAVALA GULF MAY'15					TOTAL
	KAV 12.1	KAV 12.2	KAV 12.3	KAV 12.4	KAV 12.5	
<i>Abra alba</i>				3	2	5
<i>Abra nitida</i>						0
<i>Solemya togata</i>						0
<i>Arcopagia balaustina</i>						0
<i>Moerella (tellina) distorta</i>						0
<i>Moerella (tellina) cf donacina</i>	1					1
<i>Tellina serrata</i>			1			1
<i>Tellina juv.</i>					2	2
<i>Thracia juv.</i>						0
<i>Thyasira flexuosa</i>						0
<i>Clausinella brongniartii</i> ***						0
<i>Pitar rudis</i>						0
<i>Timoclea ovata</i>	2	2		1	2	7
<i>Calyptrea chinensis</i>						0
<i>Euspira cf pulchella</i>	2					2
<i>Acanthochitona juv.</i>			1			1
<i>Antalis novemcostata</i> ****						0
Echinodermata						
<i>Amphiura filiformis</i>						0
<i>Amphiura chiajei</i>						0
<i>Amphipholis squamata</i>		3		2		5
<i>Ophiocten affinis</i>						0
<i>Echinocyamus pusillus</i>		1				1
Sipuncula						
<i>Aspidosiphon muelleri</i>						0
<i>Phascolosoma sp.</i>						0
<i>Onchnosoma steenstrupii</i>						0
<i>Golfingiiformes sp.2</i> ^{6†}						0
Chordata						
Ascidacea sp.1*						0
Ascidacea juv sp.2						0
Porifera						
<i>Suberites domuncula</i> *****						0
Miscellanea						
Echiura ^{7†}						0
Phoronida						0
Nematoda	4	2				6
Nemertea	2	1		1	2	6
Nº Specimens	58	32	11	51	63	215
Nº Taxa	24	19	10	21	21	49

Taxa	KAVALA GULF MAY'15					TOTAL
	KAV 13.1	KAV 13.2	KAV 13.3	KAV 13.4	KAV 13.5	
Annelida						
<i>Ampharete cf lindstroemi</i>						0
<i>Amphicteis gunneri</i>						0
<i>Laetmonice (Hermione) hystrix</i>						0
<i>Notomastus latericeus</i>						0
<i>Aphelochaeta marioni</i>						0
<i>Chaetozone cf gibber</i>						0
<i>Chaetozone sp.</i>						0
Cirratulidae*						0
<i>Monticellina dorsobranchialis</i>						0
<i>Cossura coasta</i>						0
<i>Schistomeringos sp.*</i>						0
<i>Eunice vittata</i>						0
<i>Lysidice unicornis</i>				1		1
<i>Marphysa bellii</i>						0
<i>Pherusa sp.</i>						0
<i>Glycera sp.</i>					2	2
<i>Glycera cf celtica</i>						0
<i>Glycera rouxi</i>						0
<i>Glycera unicornis</i>						0
<i>Goniada sp.</i>	1					1
<i>Lumbrineris latreilli</i>						0
<i>Lumbrineris sp.</i>						0
<i>Gallardoneris cf iberica</i>						0
<i>Scoletoma impatiens</i>						0
<i>Clymenura sp.</i>						0
<i>Euclymene sp.</i>						0
Maldanidae*						0
<i>Nicomache lumbricalis</i>						0
<i>Praxillella gracilis</i>						0
<i>Praxillella lophoseta</i>						0
<i>Rhodine gracilior</i>						0
<i>Magelona minuta</i>						0
<i>Magelona cf wilsoni</i>						0
<i>Nephtys hombergii</i>						0
<i>Nephtys sp.*</i>						0
<i>Drilonereis filum</i>						0
<i>Aponuphis bilineata</i>						0
<i>Aponuphis cf brementi</i>						0
<i>Aponuphis fauveli</i>						0
<i>Apobuphis juv.</i>						0
<i>Ophelina cylindrica</i>						0
<i>Owenia fusiformis</i>						0
<i>Paralacydonia paradoxa</i>	2	1	1	4	1	9
<i>Levinsenia cf demiri</i>						0
<i>Cirrophorus branchiatus</i>						0
<i>Amphictene auricoma</i>						0
<i>Phyllodoce maculata</i>						0
<i>Phyllodoce sp.*</i>						0
<i>Eteone sp.*</i>						0
<i>Eumida sp.*</i>						0
<i>Sigambra tentaculata</i>						0
<i>Poecilochaetus serpens</i>						0
<i>Harmothoe sp.*</i>	1					1
<i>Chone filicaudata</i>						0
<i>Scalibregma celticum</i>	1					1

Taxa	KAVALA GULF MAY'15					TOTAL
	KAV 13.1	KAV 13.2	KAV 13.3	KAV 13.4	KAV 13.5	
<i>Ditrupa arietina</i>						0
<i>Sthenelais cf limicola</i>						0
<i>Labioleanira yhleni</i>						0
<i>Sternaspis scutata</i>						0
<i>Aonide oxycephala</i>						0
<i>Laonice cirrata</i>						0
<i>Malacoceros fuliginosus</i>						0
<i>Prionospio sp.1</i>						0
<i>Prionospio sp.2</i>						0
<i>Paraprionospio pinnata</i>				3		3
<i>Spiophanes sp.*</i>						0
<i>Exogone cf naidina</i>						0
<i>Sphaerosyllis histrix</i>						0
<i>Syllis alternata</i>						0
<i>Pista cristata</i>						0
<i>Pista sp.*</i>						0
<i>Polycirrus sp.*</i>						0
Terebellidae*						0
<i>Terebellides stroemii</i>						0
Arthropoda						
<i>Leptocheirus pectinatus</i>						0
<i>Ampelisca tenuicornis</i>						0
<i>Ampelisca sp.*</i>	1	1				2
<i>Atylus vedlomensis</i>						0
<i>Medicorophium runcicorne</i>						0
<i>Tritaeta gibbosa*****</i>						0
<i>Erichthonius punctatus</i>						0
<i>Leucothoe lilljeborgi</i>						0
<i>Maera grossimana*****</i>						0
<i>Monoculodes cf acutipes</i>						0
<i>Periculodes longimanus</i>						0
<i>Harpinia dellavallei</i>						0
<i>Urothoe elegans</i>						0
<i>Atelecyclus rotundatus</i>					1	1
<i>Paguristes eremita*****</i>						0
<i>Ethusa mascarone</i>						0
<i>Goneplax rhomboides</i>						0
<i>Ebalia sp.*</i>						0
<i>Anapagurus sp.*</i>						0
Penaeidae*		1				1
<i>Xantho pilipes</i>						0
<i>Natatolana neglecta</i>						0
<i>Kupellonura mediterranea</i>						0
<i>Apseudopsis sp.**</i>						0
<i>Leptochelia savignyi</i>						0
Mollusca						
<i>Arcidae juv.</i>						0
<i>Papillicardium papillosum</i>						0
<i>Corbula gibba</i>				2		2
<i>Hiatella arctica</i>						0
<i>Limaria loscombi</i>						0
<i>Myrtea spinifera</i>						0
<i>Lucinidae juv sp.2</i>						0
<i>Mytilus galloprovincialis</i>						0
<i>Nucula juv.</i>						0
<i>Phaxas cf pellucidus</i>						0

Taxa	KAVALA GULF MAY'15					TOTAL
	KAV 13.1	KAV 13.2	KAV 13.3	KAV 13.4	KAV 13.5	
<i>Abra alba</i>						0
<i>Abra nitida</i>						0
<i>Solemya togata</i>						0
<i>Arcopagia balaustina</i>						0
<i>Moerella (tellina) distorta</i>						0
<i>Moerella (tellina) cf donacina</i>				1		1
<i>Tellina serrata</i>						0
<i>Tellina juv.</i>						0
<i>Thracia juv.</i>						0
<i>Thyasira flexuosa</i>						0
<i>Clausinella brongniartii</i> ***						0
<i>Pitar rudis</i>						0
<i>Timoclea ovata</i>						0
<i>Calyptrea chinensis</i>						0
<i>Euspira cf pulchella</i>						0
<i>Acanthochitona juv.</i>						0
<i>Antalis novemcostata</i> ****						0
Echinodermata						
<i>Amphiura filiformis</i>						0
<i>Amphiura chiajei</i>						0
<i>Amphipholis squamata</i>						0
<i>Ophiocten affinis</i>	1		1			2
<i>Echinocyamus pusillus</i>						0
Sipuncula						
<i>Aspidosiphon muelleri</i>						0
<i>Phascolosoma sp.</i>						0
<i>Onchnosoma steenstrupii</i>						0
<i>Golfingiiformes sp.2</i> ^{6†}						0
Chordata						
Ascidacea sp.1*						0
Ascidacea juv sp.2						0
Porifera						
<i>Suberites domuncula</i> *****						0
Miscellanea						
Echiura ^{7†}						0
Phoronida						0
Nematoda						0
Nemertea						0
Nº Specimens	7	3	2	11	4	27
Nº Taxa	6	3	2	5	3	13

Taxa						TOTAL
	KAV 14.1	KAV 14.2	KAV 14.3	KAV 14.4	KAV 14.5	
Annelida						
<i>Ampharete cf lindstroemi</i>						0
<i>Amphicteis gunneri</i>						0
<i>Laetmonice (Hermione) hystrix</i>						0
<i>Notomastus latericeus</i>			1			1
<i>Aphelochaeta marioni</i>						0
<i>Chaetozone cf gibber</i>						0
<i>Chaetozone sp.</i>						0
Cirratulidae*						0
<i>Monticellina dorsobranchialis</i>						0
<i>Cossura coasta</i>						0
Chrysopetalidae sp.			2			2
<i>Schistomeringos sp.*</i>	1	2				3
<i>Eunice vittata</i>		1		1		2
<i>Lysidice ninetta</i>						0
<i>Lysidice unicornis</i>			2			2
<i>Marphysa bellii</i>						0
<i>Pherusa sp.</i>						0
<i>Diplocirrus glaucum</i>			1	1		2
<i>Glycera sp.</i>			1		1	2
<i>Glycera cf celtica</i>						0
<i>Glycera rouxi</i>						0
<i>Glycera unicornis</i>						0
<i>Goniada sp.</i>						0
Hesionidae sp.			3			3
<i>Lumbrineris latreilli</i>						0
<i>Lumbrineris sp.</i>	1	1				2
<i>Gallardonis cf iberica</i>						0
<i>Scoletoma impatiens</i>						0
<i>Clymenura sp.</i>						0
<i>Euclymene sp.</i>						0
Maldanidae*						0
<i>Nicomache lumbricalis</i>						0
<i>Praxillella gracilis</i>						0
<i>Praxillella lophoseta</i>						0
<i>Rhodine gracilior</i>						0
<i>Magelona minuta</i>			1			1
<i>Magelona cf wilsoni</i>						0
<i>Nephtys hombergii</i>						0
<i>Nephtys sp.*</i>						0
<i>Drilonereis filum</i>						0
<i>Aponuphis bilineata</i>				1		1
<i>Aponuphis cf brementi</i>						0
<i>Aponuphis fauveli</i>				1		1
<i>Apobuphis juv.</i>						0
<i>Ophelina cylindrica data</i>						0
<i>Owenia fusiformis</i>						0
<i>Paralacydonia paradoxa</i>	1					1
<i>Levinsenia cf demiri</i>						0
<i>Cirrophorus branchiatus</i>						0
Paraonidae sp.3		4	3	2		9
<i>Amphictene auricoma</i>						0
<i>Phyllodoce maculata</i>						0
<i>Phyllodoce sp.*</i>						0
<i>Eteone sp.*</i>						0
<i>Eumida sp.*</i>						0
<i>Sigambra tentaculata</i>						0
<i>Poecilochaetus serpens</i>					2	2
<i>Harmothoe sp.*</i>					1	1
<i>Chone filicaudata</i>						0
<i>Scalibregma celticum</i>						0

Taxa						TOTAL
	KAV 14.1	KAV 14.2	KAV 14.3	KAV 14.4	KAV 14.5	
<i>Ditrupa arietina</i>						0
<i>Sthenelais cf limicola</i>						0
<i>Labioleanira yhleni</i>						0
<i>Sternaspis scutata</i>						0
<i>Aonide oxycephala</i>						0
<i>Laonice cirrata</i>						0
<i>Malacoceros fuliginosus</i>						0
<i>Prionospio sp.1</i>						0
<i>Prionospio sp.2</i>						0
<i>Paraprionospio pinnata</i>						0
<i>Spiophanes sp.*</i>						0
<i>Exogone cf naidina</i>						0
<i>Sphaerosyllis histrix</i>						0
<i>Syllis alternata</i>						0
<i>Pista cristata</i>						0
<i>Pista sp.*</i>						0
<i>Polycirrus sp.*</i>		1				1
Terebellidae*						0
<i>Terebellides stroemii</i>						0
Arthropoda						
<i>Leptocheirus pectinatus</i>						0
<i>Ampelisca tenuicornis</i>						0
<i>Ampelisca brevicornis</i>						0
<i>Ampelisca sp.*</i>					1	1
<i>Atylus vedlomensis</i>						0
<i>Medicorophium runcicorne</i>						0
<i>Tritaeta gibbosa</i> *****			1			1
<i>Ericthonius punctatus</i>						0
<i>Jassa marmorata</i>			1		1	2
<i>Leucothoe lilljeborgi</i>						0
<i>Maera grossimana</i> *****						0
<i>Monoculodes cf acutipes</i>						0
<i>Periculodes longimanus</i>						0
<i>Harpinia dellavallei</i>						0
<i>Urothoe elegans</i>						0
<i>Atelecyclus rotundatus</i>						0
<i>Paguristes eremita</i> *****						0
<i>Ethusa mascarone</i>						0
<i>Goneplax rhomboides</i>						0
<i>Ebalia sp.*</i>		1				1
<i>Anapagurus sp.*</i>	2					2
Penaeidae*						0
<i>Xantho pilipes</i>						0
<i>Upogebia larvae</i>						0
<i>Natatolana neglecta</i>						0
<i>Gnathia dentata</i>						0
<i>Kupellonura mediterranea</i>						0
<i>Apseudopsis sp.**</i>						0
<i>Apseudes talpa</i>						0
<i>Leptochelia savignyi</i>						0
Mollusca						
<i>Arcidae juv.</i>						0
<i>Digitaria digitaria</i>						0
<i>Papillicardium papillosum</i>						0
<i>Corbula gibba</i>					1	1
<i>Hiatella arctica</i>					2	2
<i>Limaria loscombi</i>						0
<i>Myrtea spinifera</i>			1			1
<i>Loripes lucinalis</i>						0
<i>Lucinidae juv sp.2</i>						0
<i>Tellimya ferruginosa</i>						0

Taxa						TOTAL
	KAV 14.1	KAV 14.2	KAV 14.3	KAV 14.4	KAV 14.5	
<i>Mytilus galloprovincialis</i>						0
<i>Nucula juv.</i>						0
<i>Phaxas cf pellucidus</i>						0
<i>Abra alba</i>						0
<i>Abra nitida</i>						0
<i>Solemya togata</i>						0
<i>Arcopagia balaustina</i>						0
<i>Moerella (tellina) distorta</i>						0
<i>Moerella (tellina) cf donacina</i>						0
<i>Tellina serrata</i>						0
<i>Tellina juv.</i>						0
<i>Thracia juv.</i>						0
<i>Thyasira flexuosa</i>						0
<i>Clausinella brongiartii</i> ***						0
<i>Pitar rudis</i>						0
<i>Timoclea ovata</i>	1		1	1	1	4
<i>Caecum cf trachea</i>			1			1
<i>Calyptrea chinensis</i>						0
<i>Capulus ungaricus</i>						0
<i>Emarginula rosea</i>						0
<i>Euspira cf pulchella</i>			1			1
<i>Leptochitonidae juv.</i>			1	1		2
<i>Acanthochitona juv.</i>						0
<i>Antalis novemcostata</i> ****						0
Echinodermata						
<i>Amphiura filiformis</i>						0
<i>Amphiura chiajei</i>						0
<i>Amphipholis squamata</i>	2		2		1	5
<i>Ophiura ophiura</i>					1	1
<i>Ophiuroidea sp.</i>						0
<i>Ophiocten affinis</i>						0
<i>Cidaris cidaris</i>						0
<i>Echinocyamus pusillus</i>	1					1
Sipuncula						
<i>Aspidosiphon muelleri</i>	1			1		1
<i>Phascolosoma sp.</i>				1		1
<i>Onchnosoma steenstrupii</i>						0
<i>Golfingiiformes sp.2</i> ^{6*}						0
Chordata						
<i>Ascidacea sp.1*</i>						0
<i>Ascidacea juv sp.2</i>						0
<i>Branchiostoma lanceolatum</i>						0
Porifera						
<i>Suberites domuncula</i> *****						0
Miscellanea						
<i>Echiura</i> ^{7*}						0
Phoronida						0
Nematoda	5		11			16
Nemertea			2			2
Nº Specimens	15	10	36	9	12	82
Nº Taxa	9	6	18	8	10	163

* Specimens incomplete, without structures useful to follow the keys

** The spines distribution under peripod 1 and the hyposphenia number disagree with all species which are described at the moment.

*** Some authors think *Clausinella brongiartii* (Payraudeau, 1826) is a Mediterranean and different specie but nowadays it only looks like an intermediate shape between juvenile and mature state of *Clausinella fasciata*. (Gofas, S.; Salas, C.; Moreno, D. Moluscos Marinos de Andalucía. Junta de Andalucía, Consejería de Medio Ambiente, Sevilla 2010)

**** *Antalis inaequicostata* is usually used for Mediterraneans shape of *Antalis novemcostata* but nowadays is not completely accept. (Gofas, S.; Salas, C.; Moreno, D. Moluscos Marinos de Andalucía. Junta de Andalucía, Consejería de Medio Ambiente, Sevilla 2010)

***** Symbiotic relationship

6* *Onchnosoma steenstrupii* is also Order Golfingiiformes. (Saiz Salinas, J.I. 1993. Sipuncula. Fauna Ibérica, vol 4, CSIC)

7* **Phylum or Subclass**

Taxa						TOTAL
	KAV 15.1	KAV 15.2	KAV 15.3	KAV 15.4	KAV 15.5	
Annelida						
<i>Ampharete cf lindstroemi</i>						0
<i>Amphicteis gunneri</i>						0
<i>Laetmonice (Hermione) hystrix</i>						0
<i>Notomastus latericeus</i>		1			3	4
<i>Aphelochaeta marioni</i>				1		1
<i>Chaetozone cf gibber</i>			1			1
<i>Chaetozone sp.</i>						0
Cirratulidae*						0
<i>Monticellina dorsobranchialis</i>					1	1
<i>Cossura coasta</i>						0
<i>Chrysopetalidae sp.</i>			1	3		4
<i>Schistomeringos sp.*</i>		1				1
<i>Eunice vittata</i>						0
<i>Lysidice ninetta</i>			2			2
<i>Lysidice unicornis</i>		1			1	2
<i>Marphysa bellii</i>						0
<i>Pherusa sp.</i>			1			1
<i>Diplocirrus glaucum</i>	1			1	1	3
<i>Glycera sp.</i>						0
<i>Glycera cf celtica</i>				1		1
<i>Glycera rouxi</i>						0
<i>Glycera unicornis</i>						0
<i>Goniada sp.</i>						0
<i>Hesionidae sp.</i>			1	1	1	3
<i>Lumbrineris latreilli</i>						0
<i>Lumbrineris sp.</i>						0
<i>Gallardonis cf iberica</i>		1				1
<i>Scoletoma impatiens</i>						0
<i>Clymenura sp.</i>						0
<i>Euclymene sp.</i>		1		1	2	4
Maldanidae*						0
<i>Nicomache lumbricalis</i>						0
<i>Praxillella gracilis</i>		2			2	4
<i>Praxillella lophoseta</i>		1				1
<i>Rhodine gracilior</i>						0
<i>Magelona minuta</i>						0
<i>Magelona cf wilsoni</i>						0
<i>Nephtys hombergii</i>						0
<i>Nephtys sp.*</i>						0
<i>Drilonereis filum</i>					1	1
<i>Aponuphis bilineata</i>	2	1			1	4
<i>Aponuphis cf brementi</i>						0
<i>Aponuphis fauveli</i>						0
<i>Apobuphis juv.</i>						0
<i>Ophelina cylindrica</i>						0
<i>Owenia fusiformis</i>						0
<i>Paralacydonia paradoxa</i>				7	1	8
<i>Levinsenia cf demiri</i>						0
<i>Cirrophorus branchiatus</i>						0
Paraonidae sp.3	3	3	5	4		15
<i>Amphictene auricoma</i>						0
<i>Phyllodoce maculata</i>						0
<i>Phyllodoce sp.*</i>						0
<i>Eteone sp.*</i>			1			1
<i>Eumida sp.*</i>						0

Taxa						TOTAL
	KAV 15.1	KAV 15.2	KAV 15.3	KAV 15.4	KAV 15.5	
<i>Sigambra tentaculata</i>	1	1				2
<i>Poecilochaetus serpens</i>	1					1
<i>Harmothoe</i> sp.*						0
<i>Chone filicaudata</i>			1		1	2
<i>Scalibregma celticum</i>						0
<i>Ditrupa arietina</i>						0
<i>Sthenelais cf limicola</i>						0
<i>Labioleanira yhleni</i>						0
<i>Sternaspis scutata</i>						0
<i>Aonide oxycephala</i>					3	3
<i>Laonice cirrata</i>		1				1
<i>Malacoceros fuliginosus</i>						0
<i>Prionospio</i> sp.1						0
<i>Prionospio</i> sp.2						0
<i>Paraprionospio pinnata</i>						0
<i>Spiophanes</i> sp.*						0
<i>Exogone cf naidina</i>						0
<i>Sphaerosyllis histrix</i>						0
<i>Syllis alternata</i>						0
<i>Pista cristata</i>					2	2
<i>Pista</i> sp.*						0
<i>Polycirrus</i> sp.*						0
Terebellidae*						0
<i>Terebellides stroemii</i>			2			2
Arthropoda						
<i>Leptocheirus pectinatus</i>						0
<i>Ampelisca tenuicornis</i>						0
<i>Ampelisca brevicornis</i>				6	1	7
<i>Ampelisca</i> sp.*						0
<i>Atylus vedlomensis</i>						0
<i>Medicorophium runcicorne</i>						0
<i>Tritaeta gibbosa</i> *****						0
<i>Ericthonius punctatus</i>						0
<i>Jassa marmorata</i>						0
<i>Leucothoe lilljeborgi</i>						0
<i>Maera grossimana</i> *****						0
<i>Monoculodes cf acutipes</i>						0
<i>Perioculodes longimanus</i>						0
<i>Harpinia dellavallei</i>						0
<i>Urothoe elegans</i>						0
<i>Atelecyclus rotundatus</i>						0
<i>Paguristes eremita</i> *****						0
<i>Ethusa mascarone</i>						0
<i>Goneplax rhomboides</i>						0
<i>Ebalia</i> sp.*						0
<i>Anapagurus</i> sp.*		1				1
Penaeidae*						0
<i>Xantho pilipes</i>						0
<i>Upogebia larvae</i>		1				1
<i>Natatolana neglecta</i>						0
<i>Gnathia dentata</i>			1			1
<i>Kupellonura mediterranea</i>						0
<i>Apseudopsis</i> sp.**						0
<i>Apseudes talpa</i>			1			1
<i>Leptochelia savignyi</i>						0
Mollusca						

Taxa						TOTAL
	KAV 15.1	KAV 15.2	KAV 15.3	KAV 15.4	KAV 15.5	
<i>Arcidae</i> juv.						0
<i>Digitaria digitaria</i>					1	1
<i>Papillicardium papillosum</i>						0
<i>Corbula gibba</i>						0
<i>Hiatella arctica</i>	1		2			3
<i>Limaria loscombi</i>						0
<i>Myrtea spinifera</i>						0
<i>Loripes lucinalis</i>		2		1		3
<i>Lucinidae</i> juv sp.2						0
<i>Tellimya ferruginosa</i>					1	1
<i>Mytilus galloprovincialis</i>						0
<i>Nucula</i> juv.						0
<i>Phaxas cf pellucidus</i>						0
<i>Abra alba</i>						0
<i>Abra nitida</i>						0
<i>Solemya togata</i>			1		1	2
<i>Arcopagia balaustina</i>						0
<i>Moerella (tellina) distorta</i>						0
<i>Moerella (tellina) cf donacina</i>	1					1
<i>Tellina serrata</i>						0
<i>Tellina</i> juv.						0
<i>Thracia</i> juv.		1				1
<i>Thyasira flexuosa</i>						0
<i>Clausinella brongniartii</i> ***						0
<i>Pitar rudis</i>						0
<i>Timoclea ovata</i>		2	1	1	2	6
<i>Caecum cf trachea</i>		1				1
<i>Calyptrea chinensis</i>						0
<i>Capulus ungaricus</i>			1			1
<i>Emarginula rosea</i>			1			1
<i>Euspira cf pulchella</i>	1		1	1		3
<i>Leptochitonidae</i> juv.		1	1			2
<i>Acanthochitona</i> juv.						0
<i>Antalis novemcostata</i> ****						0
Echinodermata						
<i>Amphiura filiformis</i>						0
<i>Amphiura chiajei</i>				1		1
<i>Amphipholis squamata</i>			1	2		3
<i>Ophiura ophiura</i>				1		1
<i>Ophiuroidea</i> sp.	1					1
<i>Ophiocten affinis</i>						0
<i>Cidaris cidaris</i>				1		1
<i>Echinocyamus pusillus</i>					2	2
Sipuncula						
<i>Aspidosiphon muelleri</i>						0
<i>Phascolosoma</i> sp.						0
<i>Onchnosoma steenstrupii</i>						0
<i>Golfingiiformes</i> sp.2 ⁶						0
Chordata						
<i>Ascidacea</i> sp.1*						0
<i>Ascidacea</i> juv sp.2						0
<i>Branchiostoma lanceolatum</i>	1					1
Porifera						
<i>Suberites domuncula</i> ****						0
Miscellanea						
<i>Echiura</i> ?						0
<i>Phoronida</i>						0

Taxa						TOTAL
	KAV 15.1	KAV 15.2	KAV 15.3	KAV 15.4	KAV 15.5	
Nematoda		4	5		4	13
Nemertea		1				1
Nº Specimens	13	28	31	33	32	137
Nº Taxa	10	20	20	16	20	163

* Specimens incomplete, without structures useful to follow the keys

** The spines distribution under periópod 1 and the hyposphenia number disagree with all species which are descrited at the moment.

*** Some authors think *Clausinella brongniartii* (Payraudeau, 1826) is a Mediterranean and different specie but nowadays it only looks like an intermediate shape between juvenile and mature state of *Clausinella fasciata* . (Gofas, S.; Salas, C.; Moreno, D. Moluscos Marinos de Andalucia. Junta de Andalucia, Consejería de Medio Ambiente, Sevilla 2010)

**** *Antalis inaequicostata* is usually used for Mediterranean shape of *Antalis novemcostata* but nowadays is not completely accept. (Gofas, S.; Salas, C.; Moreno, D. Moluscos Marinos de Andalucia. Junta de Andalucia, Consejería de Medio Ambiente, Sevilla 2010)

***** Symbiotic relationship

6* *Onchnosoma steenstrupii* is also Order Golfingiiformes. (Saiz Salinas, J.I. 1993. Sipuncula. Fauna Ibérica, vol 4, CSIC)

7* **Phylum or Subclass**